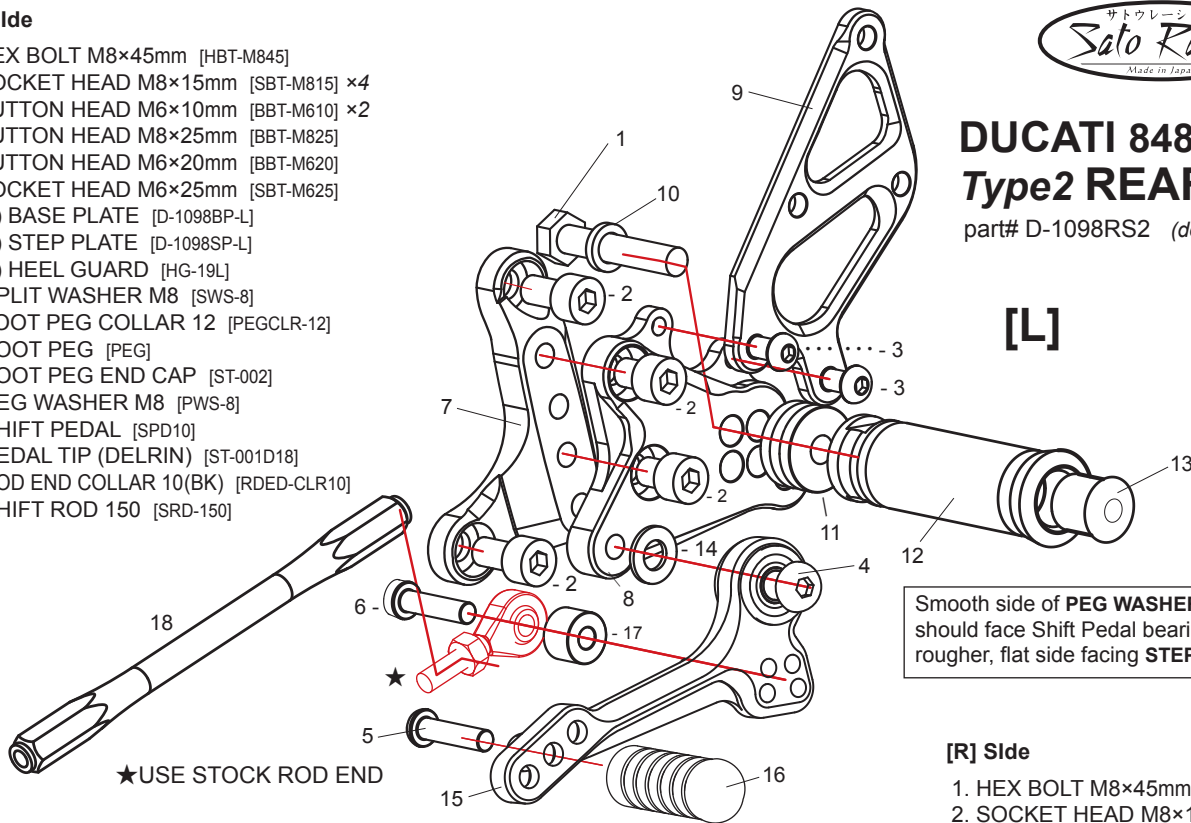


# DUCATI 848/1098/1198 Type2 REAR SETS

part# D-1098RS2 (design update 2018)

## [L] Side

1. HEX BOLT M8×45mm [HBT-M845]
2. SOCKET HEAD M8×15mm [SBT-M815] ×4
3. BUTTON HEAD M6×10mm [BBT-M610] ×2
4. BUTTON HEAD M8×25mm [BBT-M825]
5. BUTTON HEAD M6×20mm [BBT-M620]
6. SOCKET HEAD M6×25mm [SBT-M625]
7. (L) BASE PLATE [D-1098BP-L]
8. (L) STEP PLATE [D-1098SP-L]
9. (L) HEEL GUARD [HG-19L]
10. SPLIT WASHER M8 [SWS-8]
11. FOOT PEG COLLAR 12 [PEGCLR-12]
12. FOOT PEG [PEG]
13. FOOT PEG END CAP [ST-002]
14. PEG WASHER M8 [PWS-8]
15. SHIFT PEDAL [SPD10]
16. PEDAL TIP (DELTRIN) [ST-001D18]
17. ROD END COLLAR 10(BK) [RDED-CLR10]
18. SHIFT ROD 150 [SRD-150]



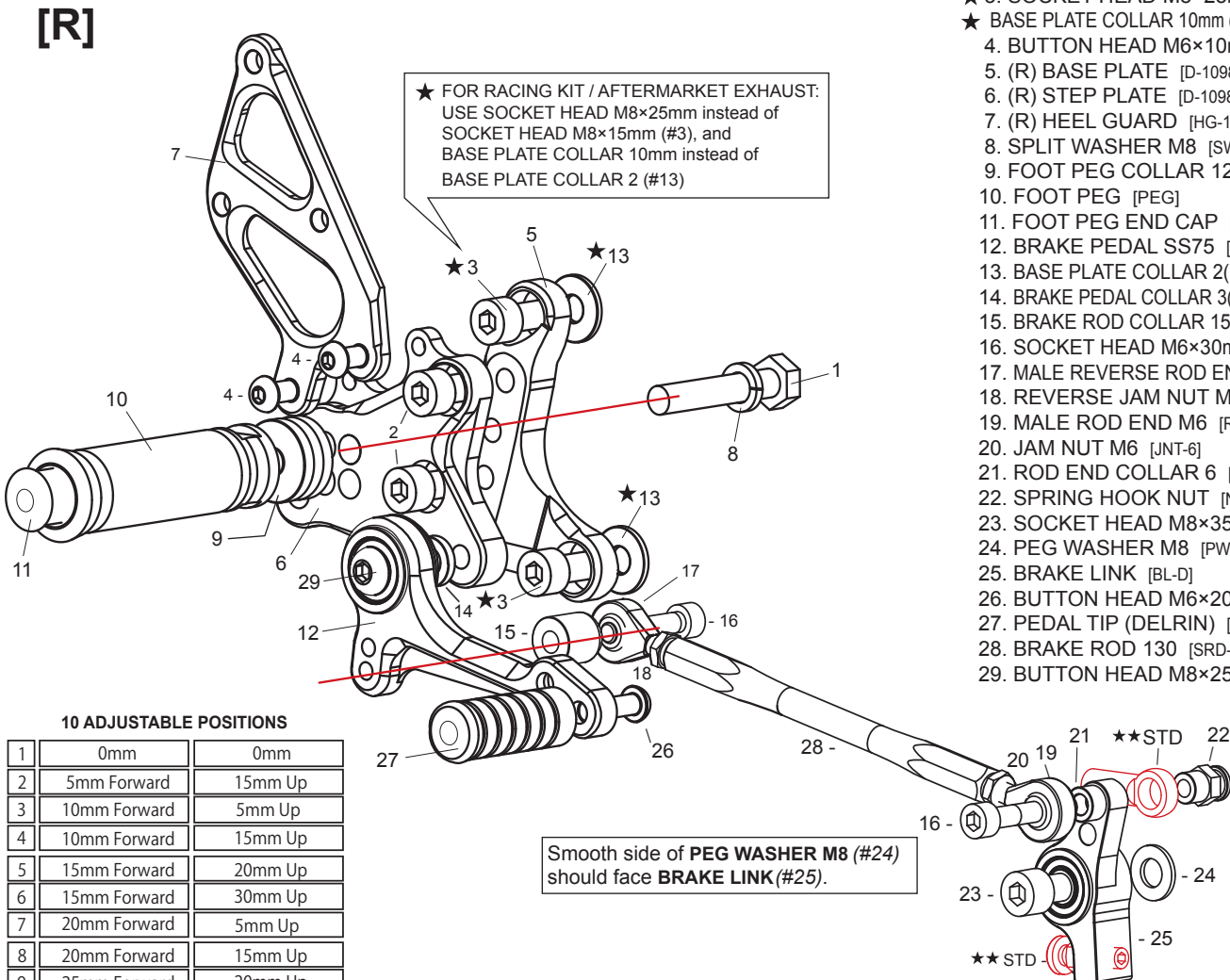
[L]

Smooth side of PEG WASHER M8 (#14)  
should face Shift Pedal bearing, with the  
rougher, flat side facing STEP PLATE (#8).

## [R] Side

1. HEX BOLT M8×45mm [HBT-M845]
2. SOCKET HEAD M8×15mm [SBT-M815] ×2
3. SOCKET HEAD M8×15mm [SBT-M815] ×2
- ★ 3. SOCKET HEAD M8×25mm [SBT-M825] ×2
- ★ BASE PLATE COLLAR 10mm (BK) [BPCLR-10] ×2
4. BUTTON HEAD M6×10mm [BBT-M610] ×2
5. (R) BASE PLATE [D-1098BP-R]
6. (R) STEP PLATE [D-1098SP2-R]
7. (R) HEEL GUARD [HG-19R]
8. SPLIT WASHER M8 [SWS-8]
9. FOOT PEG COLLAR 12 [PEGCLR-12]
10. FOOT PEG [PEG]
11. FOOT PEG END CAP [ST-002]
12. BRAKE PEDAL SS75 [BPD-10]
13. BASE PLATE COLLAR 2(BK) [BPCLR-2] ×2
14. BRAKE PEDAL COLLAR 3(BK) [CLR3-8]
15. BRAKE ROD COLLAR 15(BK) [RDED-CLR15]
16. SOCKET HEAD M6×30mm [SBT-M630] ×2
17. MALE REVERSE ROD END M6 [RDED-M6L]
18. REVERSE JAM NUT M6 [JNT-6L]
19. MALE ROD END M6 [RDED-M6]
20. JAM NUT M6 [JNT-6]
21. ROD END COLLAR 6 [RDEDCLR-6]
22. SPRING HOOK NUT [NUT-SH]
23. SOCKET HEAD M8×35mm [SBT-M835]
24. PEG WASHER M8 [PWS-8]
25. BRAKE LINK [BL-D]
26. BUTTON HEAD M6×20mm [BBT-M620]
27. PEDAL TIP (DELTRIN) [ST-001D18]
28. BRAKE ROD 130 [SRD-130]
29. BUTTON HEAD M8×25mm [BBT-M825]

★ FOR RACING KIT / AFTERMARKET EXHAUST:  
USE SOCKET HEAD M8×25mm instead of  
SOCKET HEAD M8×15mm (#3), and  
BASE PLATE COLLAR 10mm instead of  
BASE PLATE COLLAR 2 (#13)



★★ USE STOCK PARTS

### 10 ADJUSTABLE POSITIONS

	0mm	0mm
1	0mm	0mm
2	5mm Forward	15mm Up
3	10mm Forward	5mm Up
4	10mm Forward	15mm Up
5	15mm Forward	20mm Up
6	15mm Forward	30mm Up
7	20mm Forward	5mm Up
8	20mm Forward	15mm Up
9	25mm Forward	20mm Up
10	25mm Forward	30mm Up