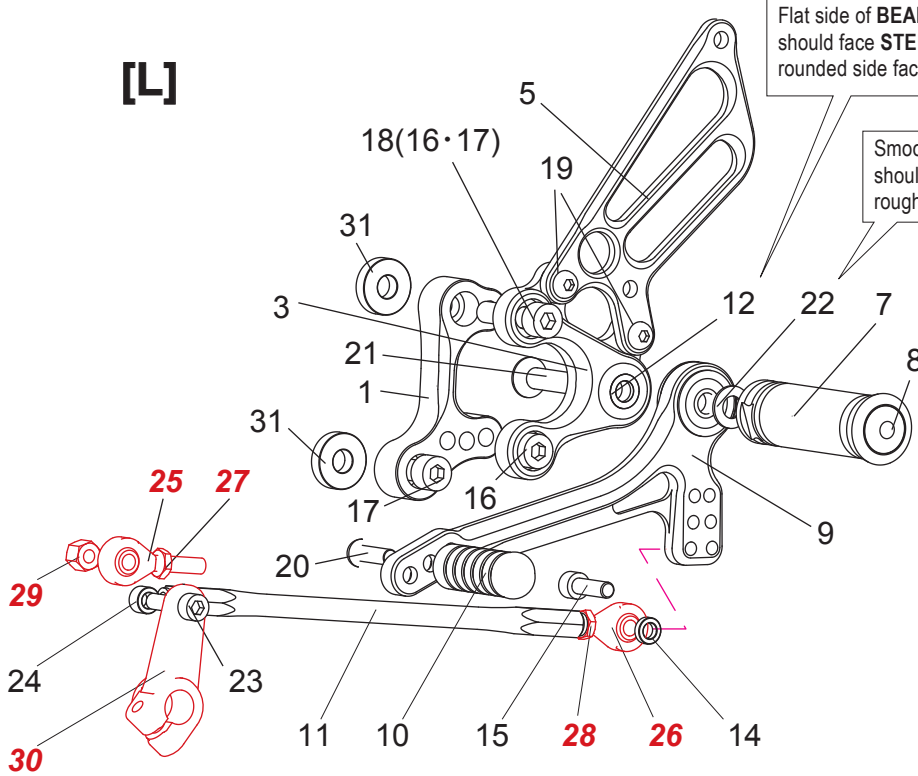


[L]



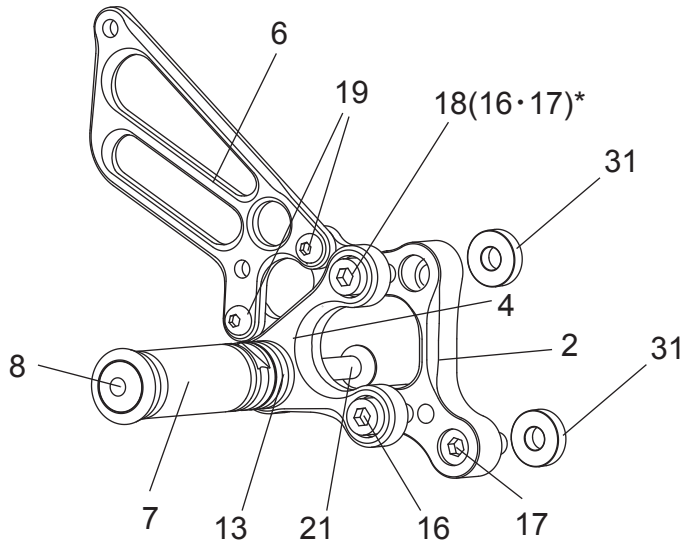
Flat side of **BEARING COLLAR SUS (#12)** should face **STEP PLATE (#3)**, with the rounded side facing out toward pedal bearing.

Smooth front of **PEG WASHER M8 (#22)** should face Shift Pedal bearing, with the rougher, flat side facing out toward peg.

1. (L) BASE PLATE [D-916BP-L]
2. (R) BASE PLATE [D-916BP-R]
3. (L) STEP PLATE [D-916SP-L]
4. (R) STEP PLATE [D-916SP-R]
5. (L) HEEL GUARD [HG-6L]
6. (R) HEEL GUARD [HG-6R]
7. FOOT PEG [PEG] × 2
8. FOOT PEG END CAP [ST-002] × 2
9. SHIFT PEDAL 70 [SPD-0102]
10. PEDAL TIP (DELRIN) [ST-001D / ST-001D18]
11. SHIFT ROD 190 [SRD-190]
12. BEARING COLLAR SUS [BGCLR-SUS]
13. FOOT PEG COLLAR 12 [PEGCLR-12]
14. ROD END COLLAR 3(GD) [RDED-CLR3]
15. SOCKET HEAD M6×20mm [SBT-M620]
16. SOCKET HEAD M8×15mm [SBT-M815] × 4
17. SOCKET HEAD M8×20mm [SBT-M820] × 4
18. SOCKET HEAD M8×35mm [SBT-M835] × 2
19. BUTTON HEAD M6×10mm [BBT-M610] × 4
20. BUTTON HEAD M6×20mm [BBT-M620]
21. FLAT HEAD M8×45mm [FBT-M845] × 2
22. PEG WASHER M8 [PWS-8]
23. SOCKET HEAD M6×25mm [SBT-M625]
24. ROD END COLLAR 6(GD) [RDED-CLR6]

[R]

(Use with the stock brake pedal)



STOCK DUCATI PARTS:

- 25. ROD END
- 26. ROD END
- 27. NUT
- 28. NUT
- 29. LOCK NUT
- 30. CHANGE ARM

31. BASE PLATE COLLAR 5(BK) [BPCLR-5] × 4

POSITIONS

* Depending on the upper attachment position of the Step Plate, you will use either the Socket Head M8x35mm bolt, or a combination of Socket Head M8x20mm and M8x15mm bolt for the top mount hole.

