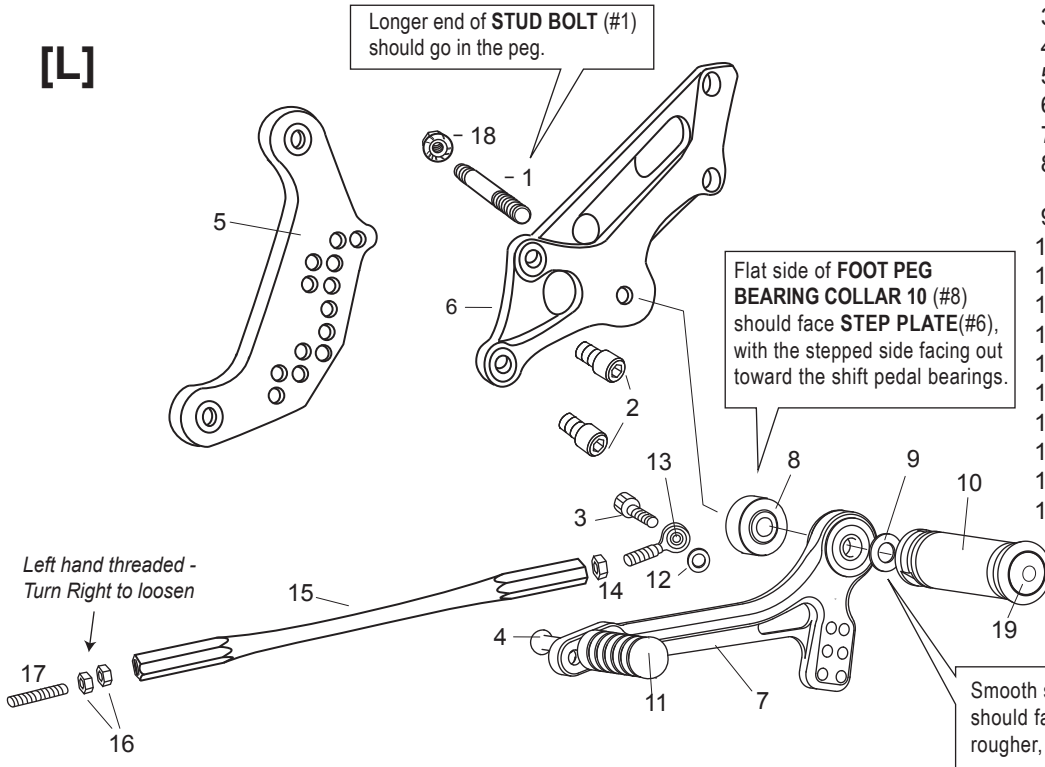


HONDA 919 / 599 / HORNET
 (CB900F / CB600F) ('02-'07)
REAR SETS (part# H-919RS)

L-SIDE

1. STUD BOLT M8x65mm [STBT-L]
2. SOCKET HEAD M8x15mm [SBT-M815] × 2
3. SOCKET HEAD M6x20mm [SBT-M620]
4. BUTTON HEAD M6x20mm [BBT-M620]
5. [L] BASE PLATE [H-919BP-L]
6. [L] STEP PLATE [H-919SP-L]
7. SHIFT PEDAL 60-70 [SPD-0102]
8. FOOT PEG BEARING COLLAR 10 [PEGBGCLR-10]
9. PEG WASHER M8 [PWS-8]
10. FOOT PEG [PEG]
11. PEDAL TIP (DELRIN) [ST-001D18]
12. ROD END COLLAR 3(GD) [RDED-CLR3]
13. MALE ROD END M6 [RDED-M6]
14. JAM NUT M6 [JNT-6]
15. SHIFT ROD 195 [SRD-195]
16. REVERSE JAM NUT M6 [JNT-6L] × 2
17. REVERSE STUD M6 [STUD-M6L]
18. FLANGE NUT M8 [FNT-8]
19. FOOT PEG END CAP [ST-002]

[L]



※ADJUST THE STOCK CHANGE ARM WHEN INSTALLING SATO REAR SETS.

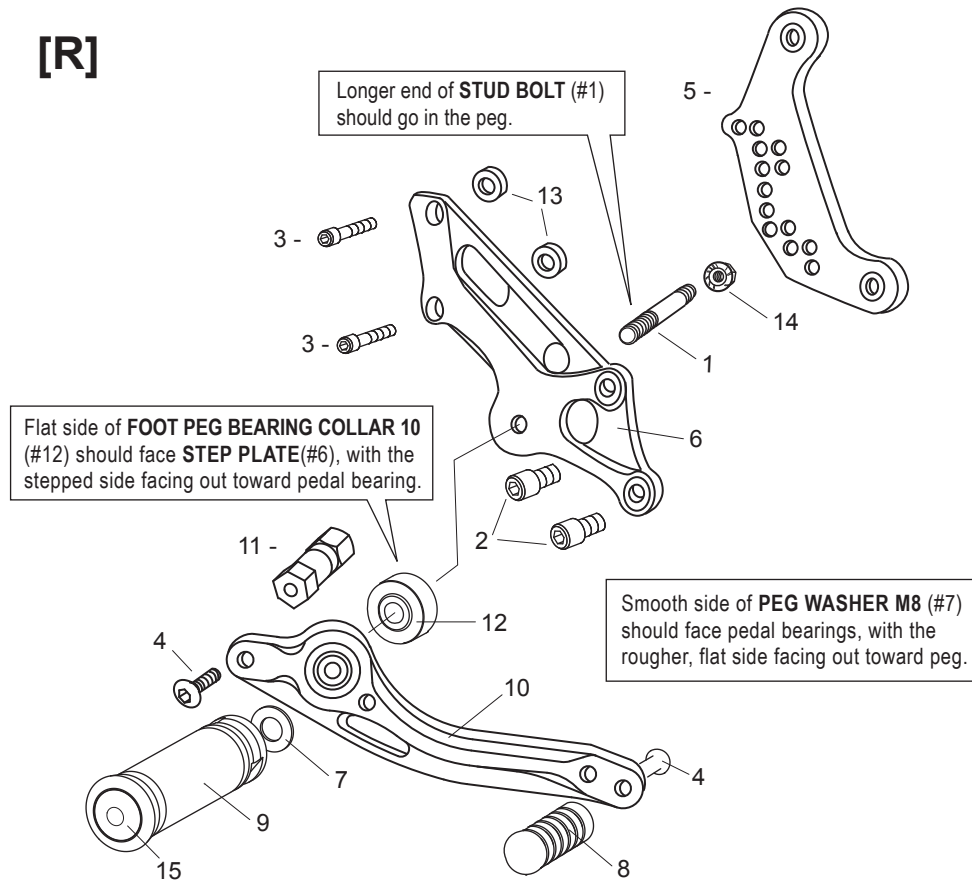
R-SIDE

1. STUD BOLT M8x65mm [STBT-L]
2. SOCKET HEAD M8x15mm [SBT-M815] × 2
3. SOCKET HEAD M6x25mm [SBT-M625] × 2
4. BUTTON HEAD M6x20mm [BBT-M620] × 2
5. [R] BASE PLATE [H-919BP-R]
6. [R] STEP PLATE [H-919SP-R]
7. PEG WASHER M8 [PWS-8]
8. PEDAL TIP (DELRIN) [ST-001D18]
9. FOOT PEG [PEG]
10. BRAKE PEDAL 165 [BPD-3]
11. BRAKE ROD L2 [BRD-L2]
12. FOOT PEG BEARING COLLAR 10 [PEGBGCLR-10]
13. MASTER CYLINDER COLLAR 8 (BK) × 2
14. FLANGE NUT M8 [FNT-8]
15. FOOT PEG END CAP [ST-002]

Not Pictured:

BRAKE LIGHT SWITCH P-1.25 [BSW-125]

[R]



POSITIONS

	10mm Back	20mm Up
1	10mm Back	30mm Up
2	20mm Back	30mm Up
3	20mm Back	40mm Up
4	30mm Back	40mm Up

All measurements are in relation to stock position (0 mm)