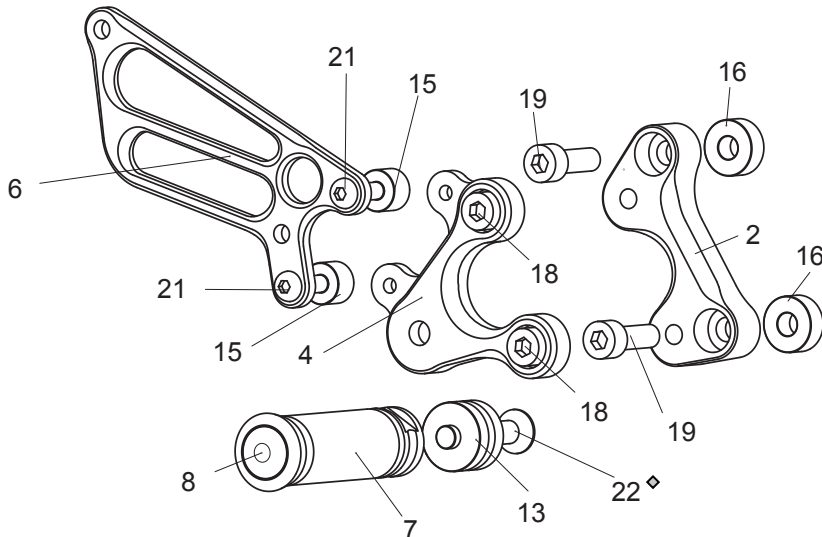


[R]



1. (L) BASE PLATE [D-999BP-L]
2. (R) BASE PLATE [D-999BP-R]
3. (L) STEP PLATE [D-916SP-L]
4. (R) STEP PLATE [D-916SP-R]
5. (L) HEEL GUARD [HG-6L]
6. (R) HEEL GUARD [HG-6R]
7. FOOT PEG [PEG] x 2
8. FOOT PEG END CAP [ST-002] x 2
9. SHIFT PEDAL 60-70 [SPD-0102]
10. PEDAL TIP (DELRIN) [ST-001D] x 2
11. SHIFT ROD 180 [SRD-180]
12. BEARING COLLAR SUS [BGCLR-SUS]
13. FOOT PEG COLLAR 15 [PEGCLR-15]
14. ROD END COLLAR 3 (GD) [RDEDCLR-3] x 2
15. HEEL GUARD COLLAR 10 (BK) [HGCLR-10] x 2
16. BASE PLATE COLLAR 8 (BK) [BPCLR-8] x 4
17. SOCKET HEAD M6 x 25mm [SBT-M625]
18. SOCKET HEAD M8 x 15mm [SBT-M815] x 4
19. SOCKET HEAD M8 x 25mm [SBT-M825] x 4
20. BUTTON HEAD M6 x 10mm [BBT-M610] x 2
21. BUTTON HEAD M6 x 20mm [BBT-M620] x 4
22. FLAT HEAD M8 x 45mm [FBT-M845] x 2
23. STUD M6 x 45mm [STUD-M6]
24. PEG WASHER M8 [PWS-8]
25. FEMALE ROD END M6 [RDED-F6]
26. MALE REVERSE ROD END M6 [RDED-M6L]
27. PLAIN NUT M6 [NUT-6]
28. JAM NUT M6 [JNT-6] x 2
29. REVERSE JAM NUT M6 [JNT-6L]
30. CHANGE ARM (stock Ducati part)

POSITIONS

1	12.5mm Forward	15mm Up
2	12.5mm Forward	20mm Up

All measurements are in relation to stock position (0 mm)

◇ Threadlocker (such as Loctite or Vibra Tite) should be applied to these bolts before tightening. (Certain pre-assembled parts have already been Loctited).

∞ Lubricate rod ends regularly.

Due to running improvements in the designs of Sato parts, some new replacement parts may look somewhat different than the original parts with the same part #. These slight differences are mostly cosmetic and have no effect on performance.