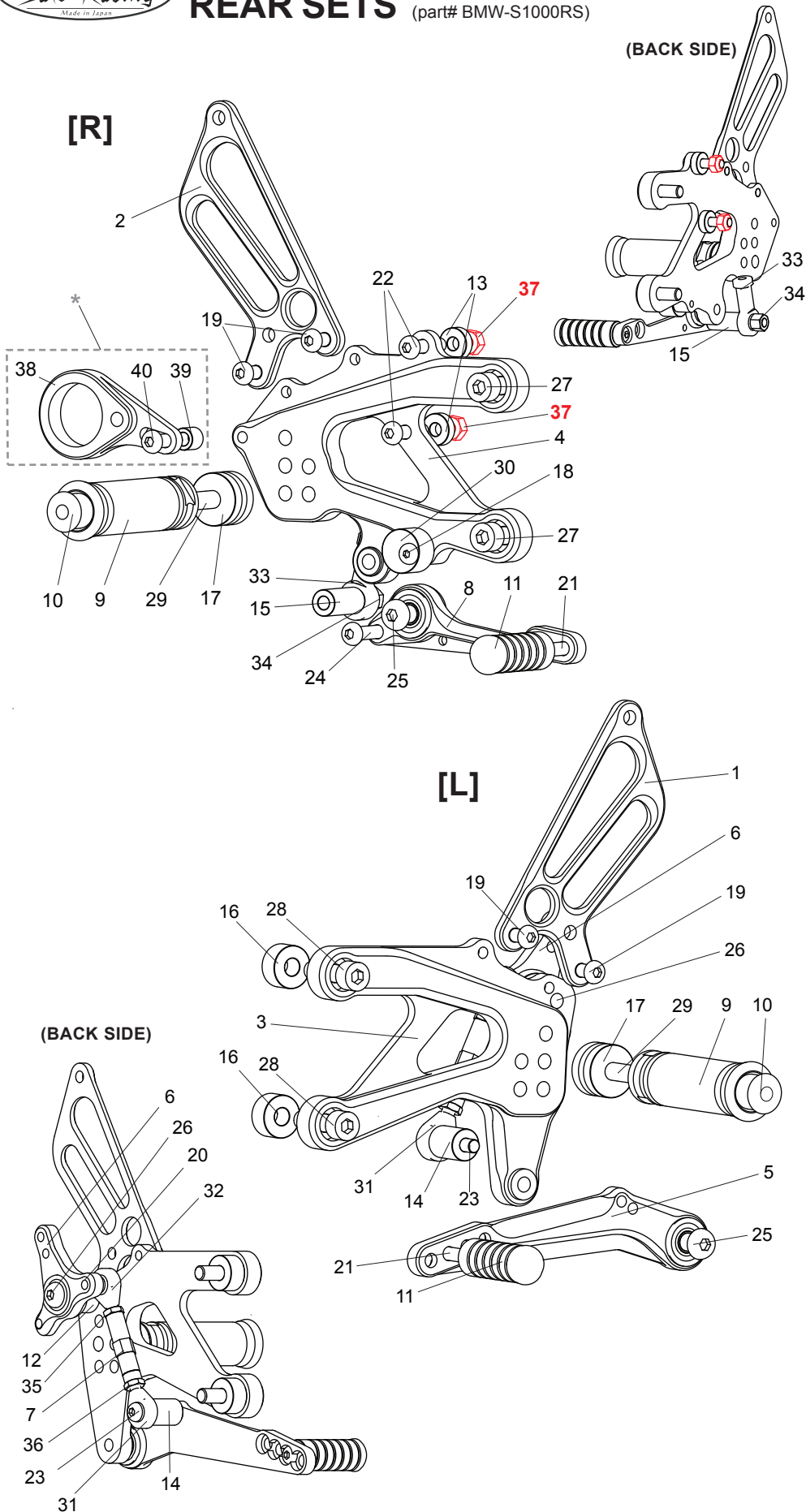


BMW S1000R ('14-'16) REAR SETS (part# BMW-S1000RS)



1. (L) HEEL GUARD [HG-6L]
2. (R) HEEL GUARD [HG-6R]
3. (L) STEP PLATE
4. (R) STEP PLATE
5. SHIFT PEDAL [SPD-15]
6. LINK 70-80(BK)
7. SHIFT ROD 40 [SRD-40]
8. BRAKE PEDAL [BPD-15]
9. FOOT PEG [PEG] (x2)
10. FOOT PEG END CAP [ST-002] (x2)
11. PEDAL TIP (DELRIN) [ST-001D] (x2)
12. BEARING COLLAR 10-8(BK) [BGCLR10-8]
13. COLLAR 5-6(BK) [CLR-5-6] (x2)
14. COLLAR 19-6(BK) [RDEDCLR-19]
15. COLLAR 25-6(BK) [RDEDCLR-25]
16. COLLAR 10-8(BK) [BPCLR-10] (x2)
17. FOOT PEG COLLAR 15 [PEGCLR-15] (x2)
18. BUTTON HEAD M5x20 [BBT-M520]
19. BUTTON HEAD M6x10 [BBT-M610] (x4)
20. BUTTON HEAD M6x18 [BBT-M618]
21. BUTTON HEAD M6x20 [BBT-M620] (x2)
22. BUTTON HEAD M6x25 [BBT-M625] (x2)
23. BUTTON HEAD M6x35 [BBT-M635]
24. BUTTON HEAD M6x50 [BBT-M650]
25. BUTTON HEAD M8x25 [BBT-M825] (x2)
26. BUTTON HEAD M8x30 [BBT-M830]
27. SOCKET HEAD M8x20 [SBT-M820] (x2)
28. SOCKET HEAD M8x30 [SBT-M830] (x2)
29. STUD BOLT M8x40 [STBT-40] (x2)
30. PEDAL STOPPER (DELRIN) [BPD-STOPPER]
31. REVERSE MALE ROD END M6 [RDED-M6L]
32. MALE ROD END M6 [RDED-M6]
33. FEMALE ROD END M6 [RDED-F6]
34. LOCK NUT M6 [LNT-6]
35. JAM NUT M6 [JNT-6]
36. REVERSE JAM NUT M6 [JNT-6L]
- 37. NUT (STOCK BMW PARTS) (x2)**
38. EXHAUST HANGER BRACKET
39. COLLAR 9-6 (BK)
40. BUTTON HEAD M6x20

*Optional HANGER BRACKET
(part # CANBT-BMW2)
- for use with stock exhaust.