

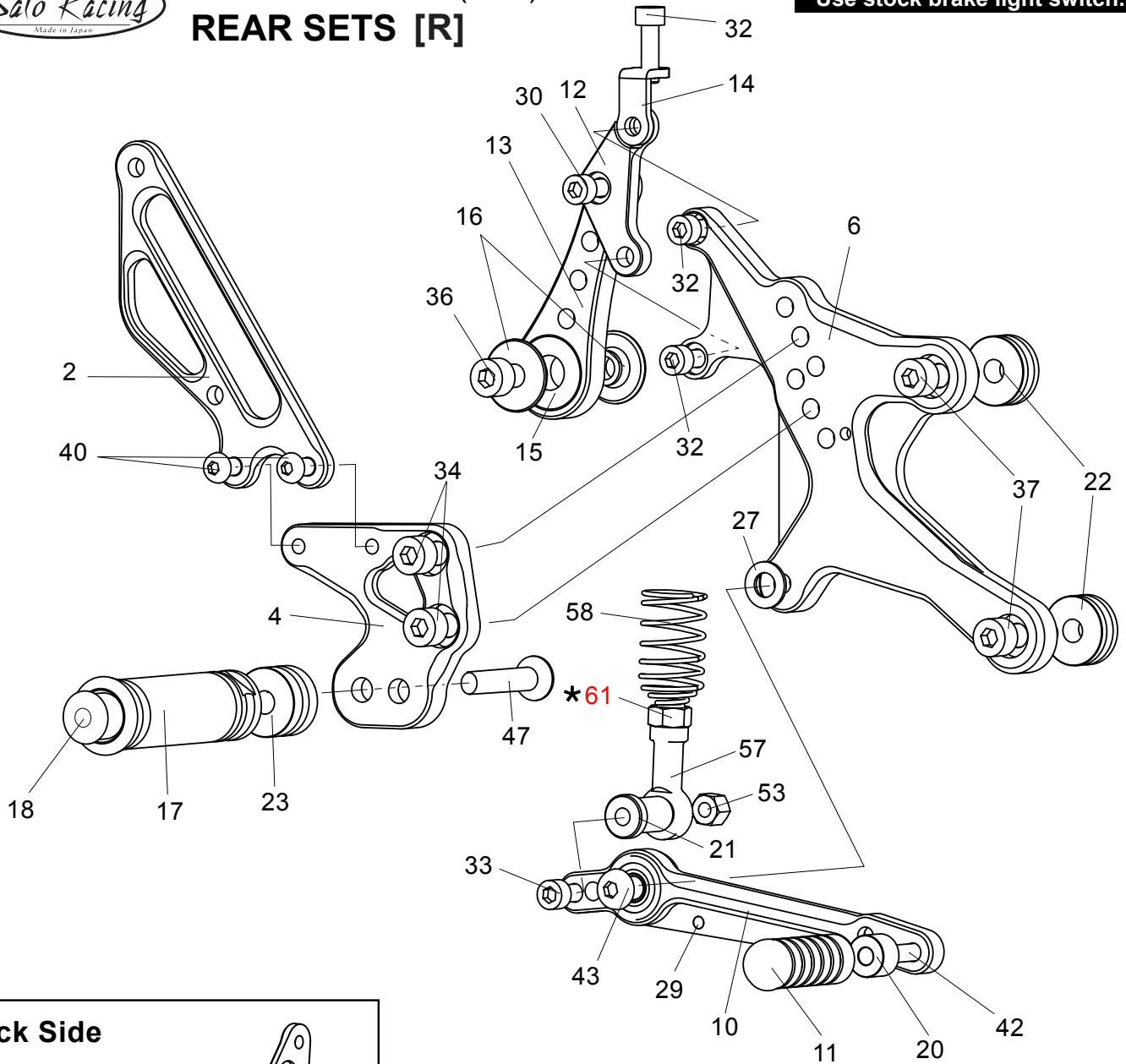
1. HEEL GUARD [L] (HG-8L)
3. STEP PLATE [L]
5. BASE PLATE [L]
7. SHIFT PEDAL SPD0912
8. SHIFT CRANK SK-2
9. SHIFT ROD 160
11. PEDAL TIP DELRIN
17. FOOT PEG
18. FOOT PEG END CAP
19. ROD END COLLAR 3(GD)
23. FOOT PEG COLLAR 15
24. PEG BEARING COLLAR 10S(BK)
25. PEG BEARING COLLAR 21(BK)
28. SPLIT WASHER M8

31. SOCKET HEAD M6-18mm x2
32. SOCKET HEAD M6-20mm
34. SOCKET HEAD M8-16mm x2
35. SOCKET HEAD M8-20mm x2
38. SOCKET HEAD M8-50mm
40. BUTTON HEAD M6-10mm x2
41. BUTTON HEAD M6-20mm
44. BUTTON HEAD M8-35mm
46. HEX HEAD M8-40mm
49. STUD M6-45mm
51. JAM NUT x2
52. REVERSE JAM NUT
54. MALE ROD END M6
55. MALE REVERSE ROD END M6
56. FEMALE ROD END M6

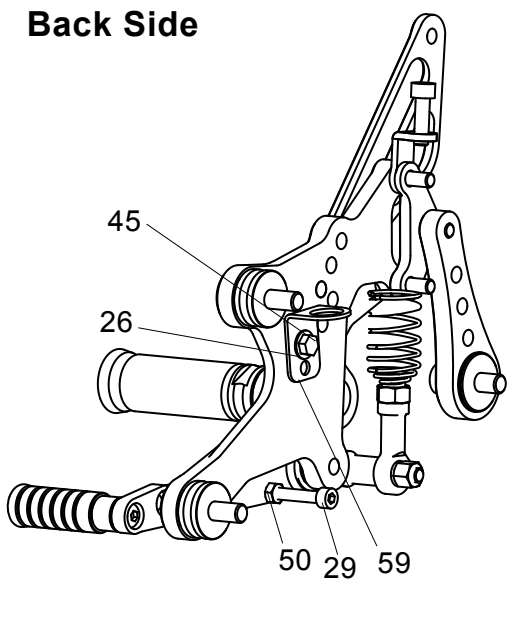
★ 60. HEX NUT (HONDA PARTS)

Due to running improvements in the designs of Sato parts, some new replacement parts may look somewhat different than the original parts with the same part #. These slight differences are mostly cosmetic and have no effect on performance.

Use stock brake light switch.



Back Side



- 2. HEEL GUARD [R] (HG-8R)
- 4. STEP PLATE [R]
- 6. BASE PLATE [R]
- 10. BRAKE PEDAL BPD-17
- 11. PEDAL TIP DELRIN
- 12. CANISTER STAY 1
- 13. CANISTER STAY 2
- 14. BENDY BRACKET M6-25 SV
- 15. URETHANE DAMPER
- 16. DAMPER COLLAR x2
- 17. FOOT PEG
- 18. FOOT PEG END CAP
- 20. COLLAR 10-6(BK)
- 21. ROD END COLLAR 23(BK)
- 22. BASE PLATE COLLAR 10x2
- 23. FOOT PEG COLLAR 15
- 26. WASHER M5
- 27. PEG WASHER M8
- 29. SOCKET HEAD M5-30mm
- 30. SOCKET HEAD M6-16mm
- 32. SOCKET HEAD M6-20mm x3
- 33. SOCKET HEAD M6-50mm
- 34. SOCKET HEAD M8-16mm x2
- 36. SOCKET HEAD M8-25mm
- 37. SOCKET HEAD M8-30mm x2
- 40. BUTTON HEAD M6-20mm x2
- 42. BUTTON HEAD M6-25mm
- 43. BUTTON HEAD M8-25mm
- 45. HEX HEAD M5-8mm
- 47. FLAT HEAD M8-40mm
- 50. NUT M5
- 53. LOCK NUT M6
- 57. FEMALE ROD END 6-M8
- 58. RETURN SPRING 40
- 59. PULL SWITCH STAY 14
- * 61. HEX NUT (HONDA PARTS)

Due to running improvements in the designs of Sato parts, some new replacement parts may look somewhat different than the original parts with the same part #. These slight differences are mostly cosmetic and have no effect on performance.