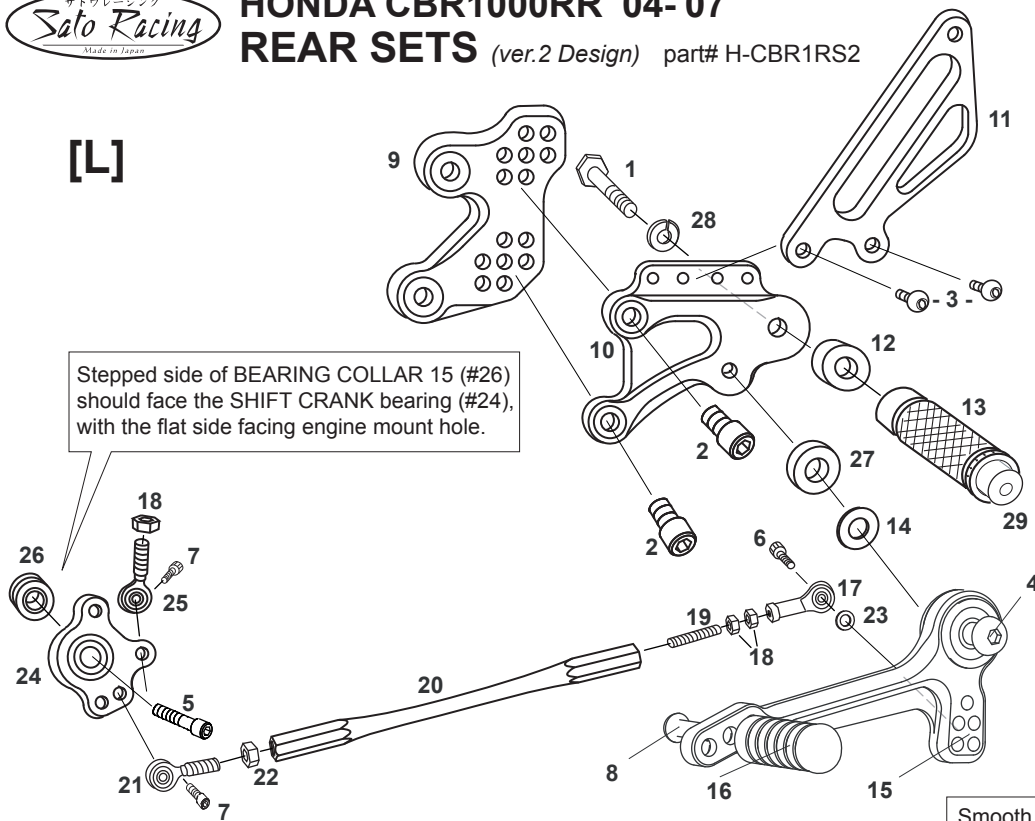


HONDA CBR1000RR '04-'07 REAR SETS (ver.2 Design) part# H-CBR1RS2

[L]



Stepped side of BEARING COLLAR 15 (#26) should face the SHIFT CRANK bearing (#24), with the flat side facing engine mount hole.

Due to running improvements in the designs of Sato parts, some new replacement parts may look somewhat different than the original parts with the same part #. These slight differences are mostly cosmetic and have no effect on performance.

Smooth front of PEG WASHER M8 (#14) should face pedal bearing, with the rougher, flat side facing COLLAR 4(#27).

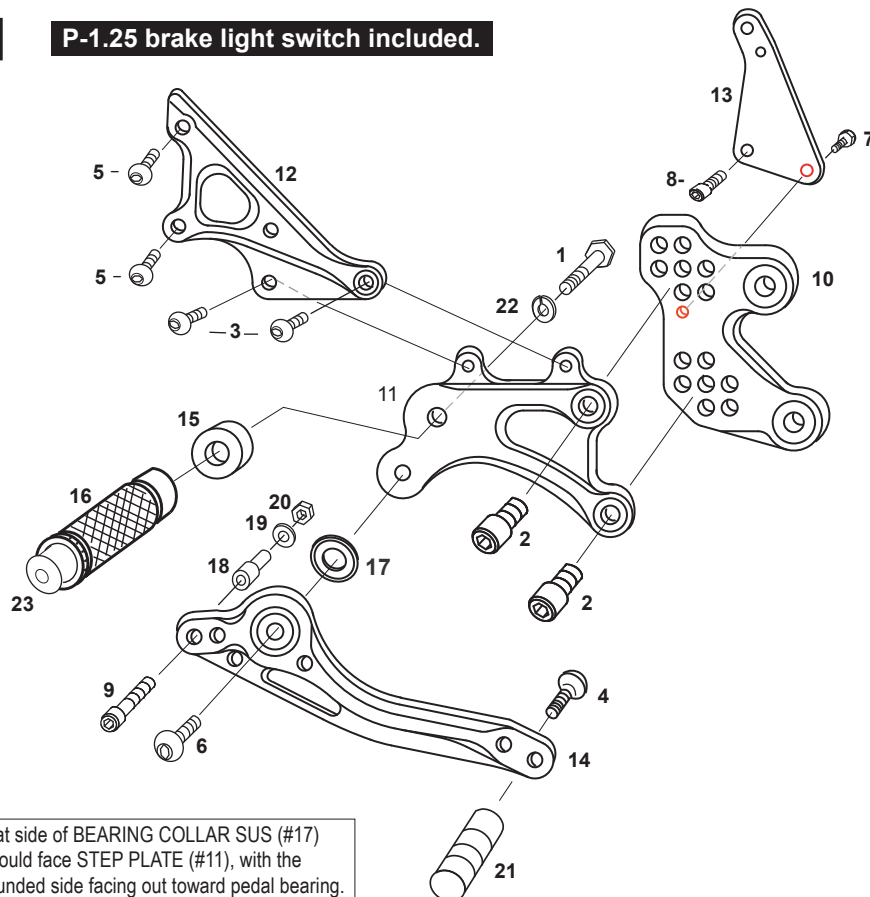
[L]-side

1. HEX BOLT M8x45mm [HBT-M845]
2. SOCKET HEAD M8x15mm [SBT-M815] x2
3. BUTTON HEAD M6x10mm [BBT-M610] x2
4. BUTTON HEAD M8x30mm [BBT-M830]
5. SOCKET HEAD M8x45mm [SBT-M845]
6. SOCKET HEAD M6x20mm [SBT-M620]
7. SOCKET HEAD M6x15mm [SBT-M615] x2
8. BUTTON HEAD M6x20mm [BBT-M620]
9. (L) BASE PLATE [H-CBR1V2BP-L]
10. (L) STEP PLATE [H-CBR1V2SP-L]
11. (L) HEEL GUARD [HG-17L]
12. FOOT PEG COLLAR 12 [PEGCLR-12]
13. FOOT PEG [PEG]
14. PEG WASHER M8 [PWS-8]
15. SHIFT PEDAL [SPD-0912]
16. PEDAL TIP (DELRIN) [ST-001D]
17. FEMALE ROD END M6 [RDED-F6]
18. JAM NUT M6 [JNT-6] x3
19. STUD M6 [STUD-M6]
20. SHIFT ROD 160 [SRD-160]
21. MALE REVERSE ROD END M6 [RDED-M6L]
22. REVERSE JAM NUT M6 [JNT-6L]
23. ROD END COLLAR 3(GD) [RDEDCLR-3]
24. SHIFT CRANK(BK) [SK-2]
25. MALE ROD END M6 [RDED-M6]
26. BEARING COLLAR 15(BK) [PEGBGCLR-15]
27. COLLAR 4 [BPCLR-4]
28. SPLIT WASHER M8 [SWS-8]
29. FOOT PEG END CAP [ST-002]

※ADJUST THE STOCK CHANGE ARM WHEN INSTALLING SATO REAR SETS.

[R]

P-1.25 brake light switch included.



Flat side of BEARING COLLAR SUS (#17) should face STEP PLATE (#11), with the rounded side facing out toward pedal bearing.

[R]-side

1. HEX BOLT M8x45mm [HBT-M845]
2. SOCKET HEAD M8x15mm [SBT-M815] x2
3. BUTTON HEAD M6x10mm [BBT-M610] x2
4. BUTTON HEAD M6x20mm [BBT-M620]
5. BUTTON HEAD M6x20mm [BBT-M620] x2
6. BUTTON HEAD M8x30mm [BBT-M830]
7. FLANGE HEAD M6x10mm [FGBT-M610]
8. SOCKET HEAD M6x15mm [SBT-M615]
9. SOCKET HEAD M6x40mm [SBT-M640]
10. (R) BASE PLATE [H-CBR1V2BP-R]
11. (R) STEP PLATE [H-CBR1V2SP-R]
12. MASTER STAY [H-CBR1V2MS]
13. GUARD STAY(BK) [HGS-HCBR1RS2]
14. BRAKE PEDAL 150 [BPD-1]
15. FOOT PEG COLLAR 12 [PEGCLR-12]
16. FOOT PEG [PEG]
17. BEARING COLLAR SUS [BGCLR-SUS]
18. BRAKE ROD COLLAR 22(BK) [RDED-CLR22]
19. WASHER M6 [WS-6]
20. PLAIN NUT M6 [NUT-6]
21. PEDAL TIP (DELRIN) [ST-001D]
22. SPLIT WASHER M8 [SWS-8]
23. FOOT PEG END CAP [ST-002]

POSITIONS

1	0mm	10mm Up
2	10mm Back	10mm Up
3	0mm	20mm Up
4	10mm Back	20mm Up
5	20mm Back	20mm Up
6	10mm Back	30mm Up
7	20mm Back	30mm Up