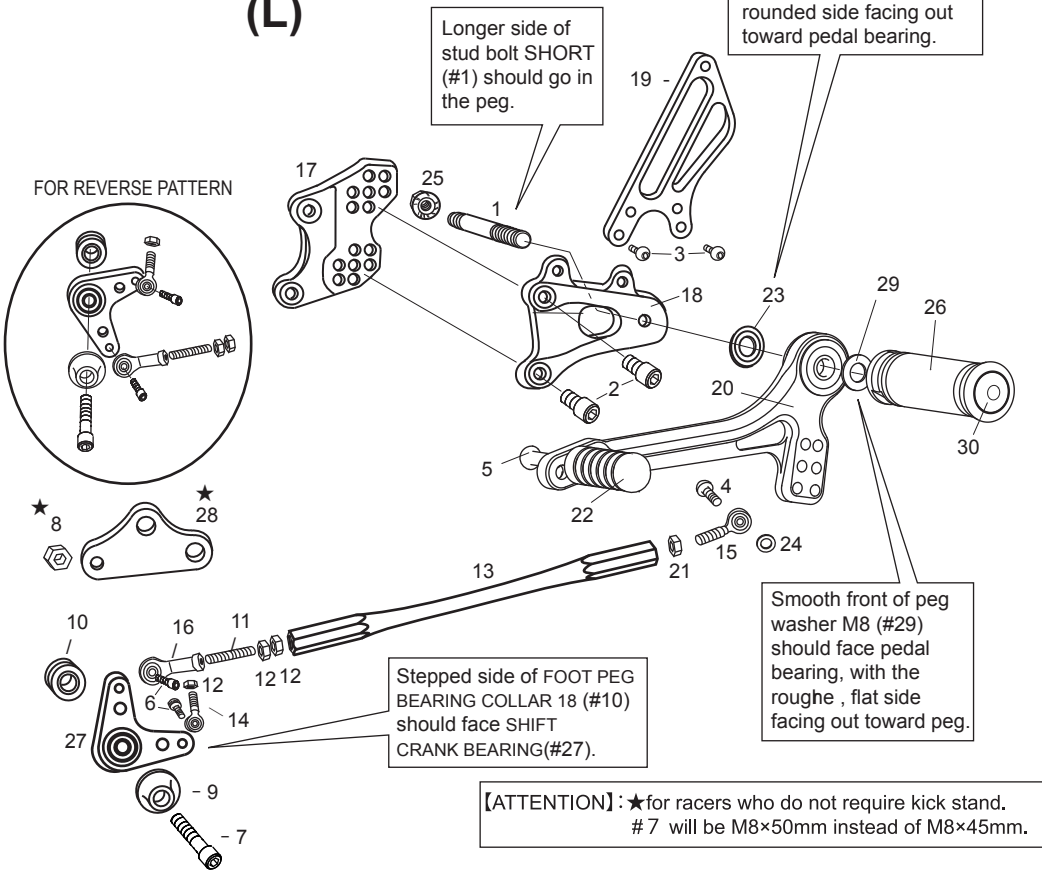


CBR600RR '03-'06

(L)



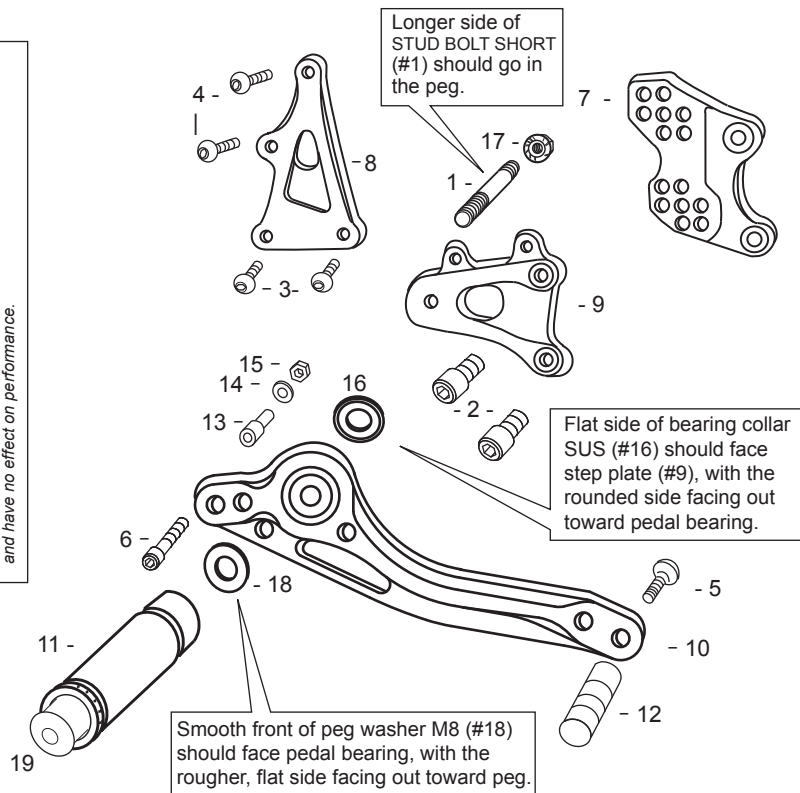
- [L] SIDE
1. STUD BOLT SHORT
 2. SOCKET HEAD M8-15mm x2
 3. BUTTON HEAD M6-10mm x2
 4. BUTTON HEAD M6-20mm
 5. BUTTON HEAD M6-20mm
 6. SOCKET HEAD M6-20mm x2
 7. SOCKET HEAD M8-45mm
 - ★ 8. PLAIN NUT M8(RACE OPTION)
 9. BEARING BOLT COVER
 10. PEG BEARING COLLAR18(BK)
 11. STUD M6
 12. JAM NUT M6 x3
 13. SHIFT ROD 190
 14. MALE ROD END M6
 15. MALE REVERSE ROD END M6
 16. FEMALE ROD END M6
 17. BASE PLATE [L]
 18. STEP PLATE [L]
 19. HEEL GUARD [L](HG3)
 20. SHIFT PEDAL 60-70(SPD0102)
 21. REVERSE JAM NUT M6
 22. PEDAL TIP DELRIN
 23. BEARING COLLAR SUS
 24. ROD END COLLAR 3
 25. FLANGE NUT M8
 26. FOOT PEG
 27. SHIFT CRANK(BK)
 - ★ 28. SHIFT CRANK BASE(BK) (RACE OPTION)
 29. PEG WASHER M8
 30. FOOT PEG END CAP

※ ADJUST THE STOCK CHANGE ARM WHEN INSTALLING SATO REAR SETS.

(R)

P-1.25 brake light switch included.

Due to running improvements in the designs of Sato parts, some new replacement parts may look somewhat different than the original parts with the same part #. These slight differences are mostly cosmetic and have no effect on performance.



- [R] SIDE
1. STUD BOLT SHORT
 2. SOCKET HEAD M8-15mm x2
 3. BUTTON HEAD M6-10mm x2
 4. BUTTON HEAD M6-20mm
 5. BUTTON HEAD M6-20mm
 6. SOCKET HEAD M6-40mm
 7. BASE PLATE [R]
 8. MASTER STAY
 9. STEP PLATE [R]
 10. BRAKE PEDAL 150(BPD1)
 11. FOOT PEG
 12. PEDAL TIP DELRIN
 13. BRAKE ROD COLLAR 22(BK)
 14. PLAIN WASHER M6
 15. PLAIN NUT M6
 16. BEARING COLLAR SUS
 17. FLANGE NUT M8
 18. PEG WASHER M8
 19. FOOT PEG END CAP

POSITIONS		
1	0mm	10mm Up
2	0mm	20mm Up
3	10mm Back	10mm Up
4	10mm Back	20mm Up
5	10mm Back	30mm Up
6	20mm Back	20mm Up
7	20mm Back	30mm Up

All measurements are in relation to stock position (0 mm)