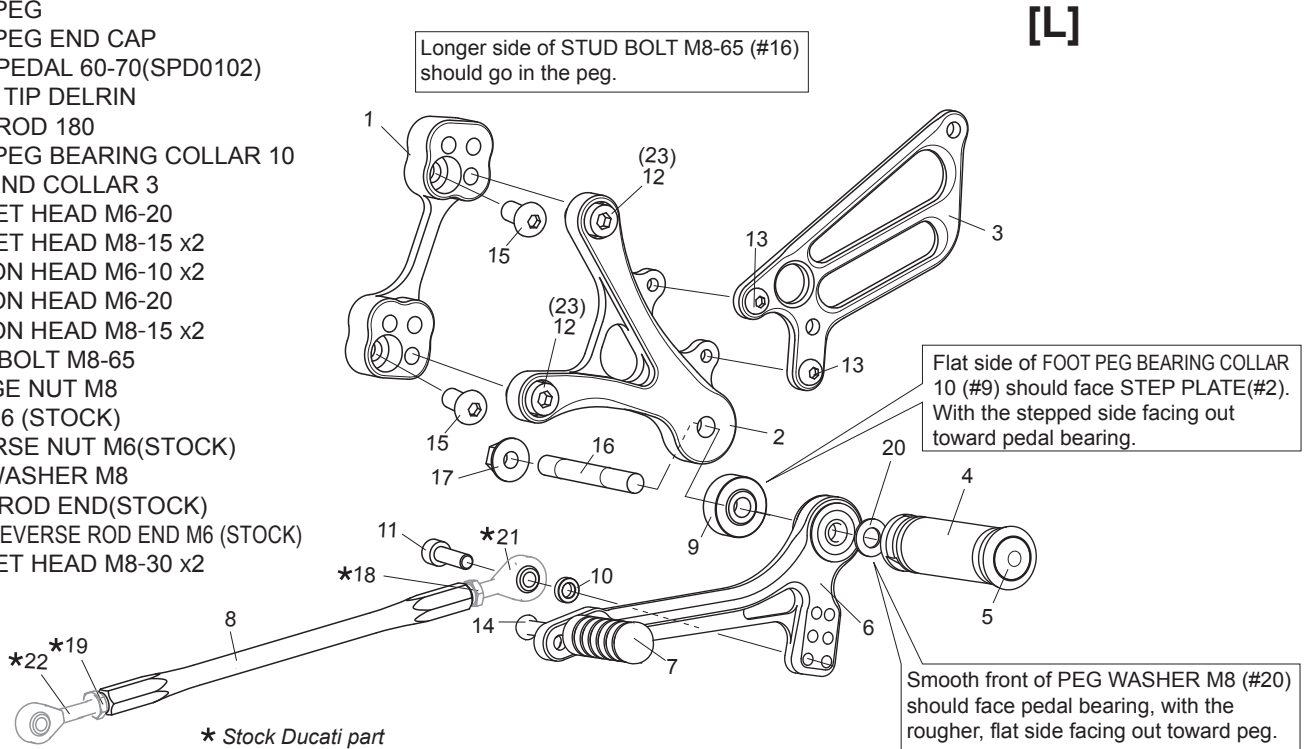


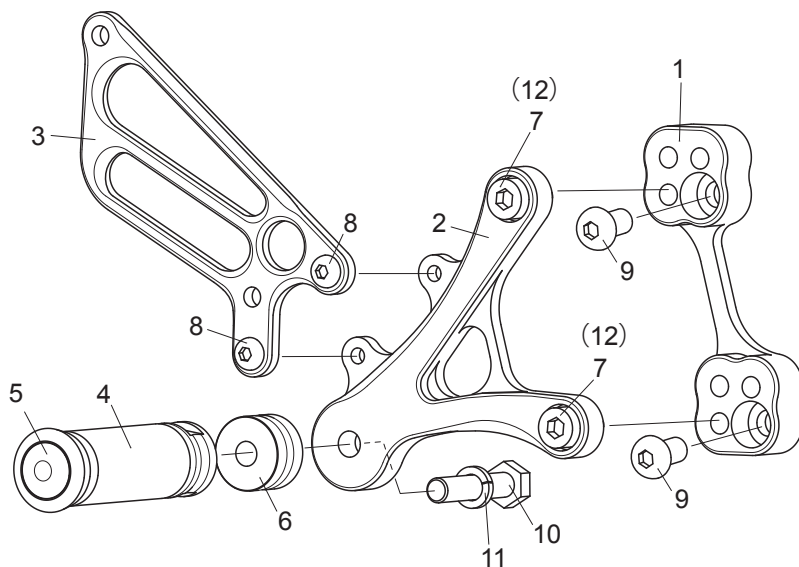
**DUCATI SS900/1000**  
(MH900e.PaulSmart1000LE.Sport1000) '98-  
**REAR SETS Type1**

1. BASE PLATE [L]
2. STEP PLATE [L]
3. HEEL GUARD [L](HG6)
4. FOOT PEG
5. FOOT PEG END CAP
6. SHIFT PEDAL 60-70(SPD0102)
7. PEDAL TIP DELRIN
8. SHIFT ROD 180
9. FOOT PEG BEARING COLLAR 10
10. ROD END COLLAR 3
11. SOCKET HEAD M6-20
12. SOCKET HEAD M8-15 x2
13. BUTTON HEAD M6-10 x2
14. BUTTON HEAD M6-20
15. BUTTON HEAD M8-15 x2
16. STUD BOLT M8-65
17. FLANGE NUT M8
- \*18. NUT M6 (STOCK)
- \*19. REVERSE NUT M6(STOCK)
20. PEG WASHER M8
- \*21. MALE ROD END(STOCK)
- \*22. MALE REVERSE ROD END M6 (STOCK)
23. SOCKET HEAD M8-30 x2



[R]

(Use stock brake pedal)



1. BASE PLATE [R]
2. STEP PLATE [R]
3. HEEL GUARD [R](HG6)
4. FOOT PEG
5. FOOT PEG END CAP
6. FOOT PEG COLLAR 15
7. SOCKET HEAD M8-15 x2
8. BUTTON HEAD M6-10 x2
9. BUTTON HEAD M8-15 x2
10. HEX HEAD M8-40
11. SPLIT WASHER M8
12. SOCKET HEAD M8-30 x2

POSITIONS		
1	15mm Forward	15mm Up
2	15mm Forward	27mm Up
3	27mm Forward	27mm Up
4	27mm Forward	15mm Up

All measurements are in relation to stock position (0 mm)

Due to running improvements in the designs of Sato parts, some new replacement parts may look somewhat different than the original parts with the same part #. These slight differences are mostly cosmetic and have no effect on performance.