

DUCATI SS900/1000
(MH900e.PaulSmart1000LE.Sport1000) '99-
REAR SETS Type2 part# D-MH9RS2

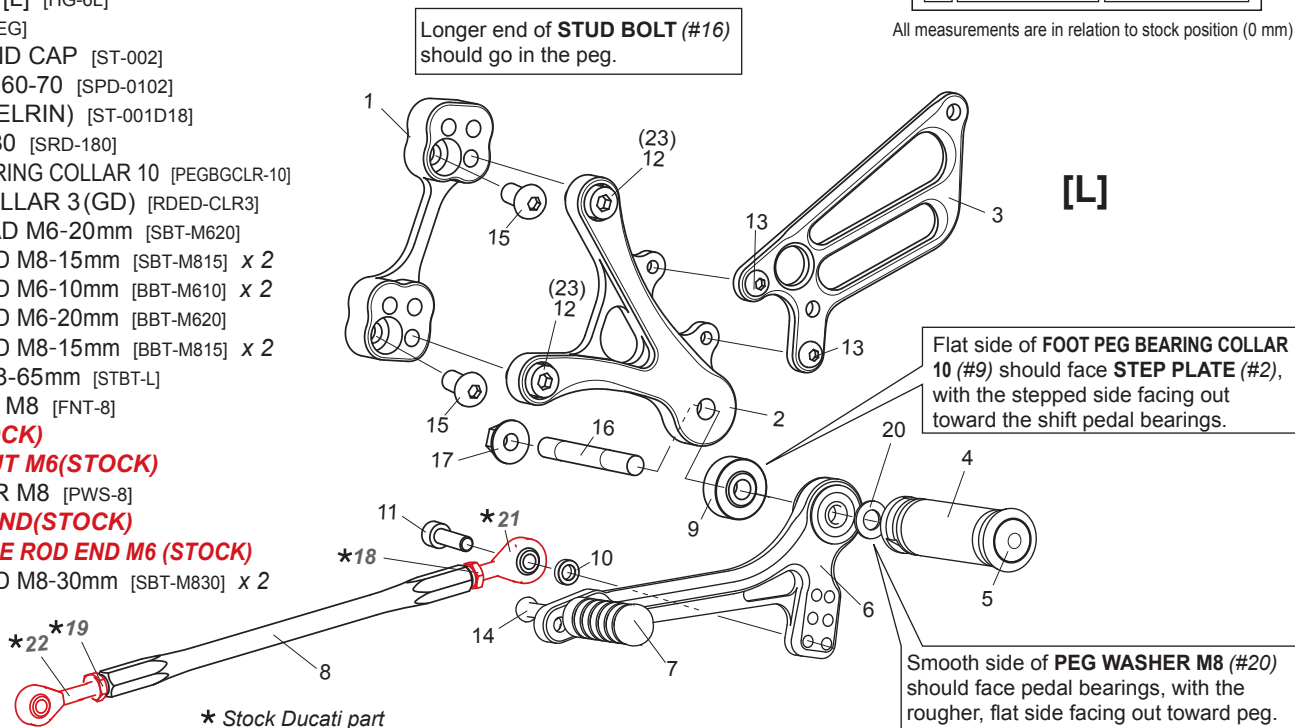
POSITIONS		
1	15mm Forward	15mm Up
2	15mm Forward	27mm Up
3	27mm Forward	27mm Up
4	27mm Forward	15mm Up

All measurements are in relation to stock position (0 mm)

[L]-SIDE

1. BASE PLATE [L] [D-MH9BP-L]
2. STEP PLATE [L] [D-MH9SP-L]
3. HEEL GUARD [L] [HG-6L]
4. FOOT PEG [PEG]
5. FOOT PEG END CAP [ST-002]
6. SHIFT PEDAL 60-70 [SPD-0102]
7. PEDAL TIP (DELRIN) [ST-001D18]
8. SHIFT ROD 180 [SRD-180]
9. FOOT PEG BEARING COLLAR 10 [PEGBGCLR-10]
10. ROD END COLLAR 3(GD) [RDED-CLR3]
11. SOCKET HEAD M6-20mm [SBT-M620]
12. SOCKET HEAD M8-15mm [SBT-M815] x 2
13. BUTTON HEAD M6-10mm [BBT-M610] x 2
14. BUTTON HEAD M6-20mm [BBT-M620]
15. BUTTON HEAD M8-15mm [BBT-M815] x 2
16. STUD BOLT M8-65mm [STBT-L]
17. FLANGE NUT M8 [FNT-8]

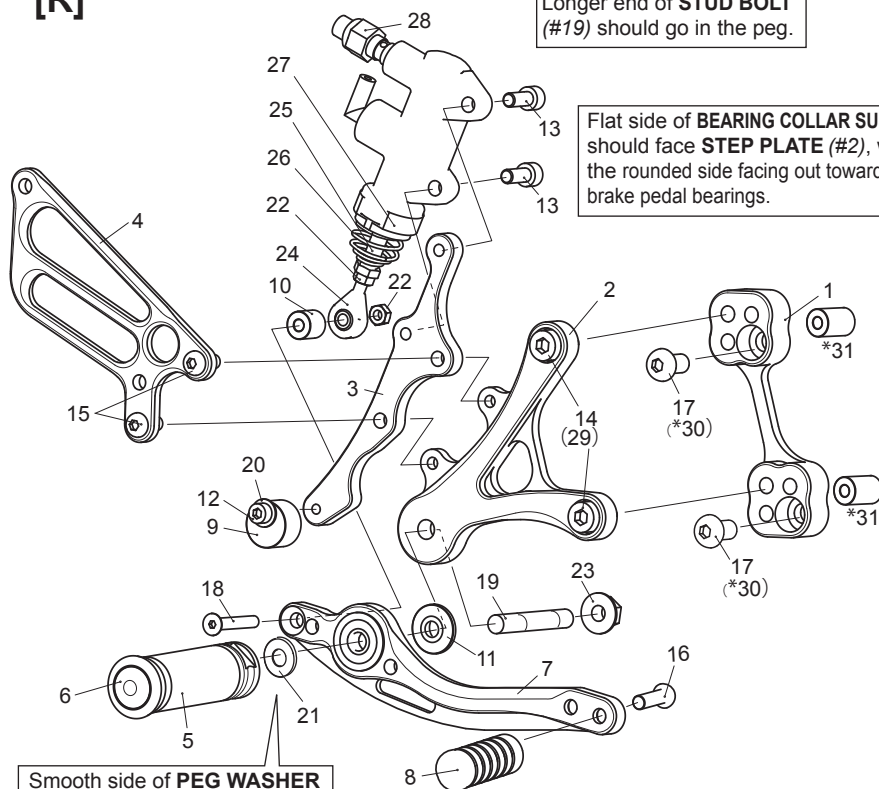
- * 18. NUT M6 (STOCK)
- * 19. REVERSE NUT M6(STOCK)
- * 20. PEG WASHER M8 [PWS-8]
- * 21. MALE ROD END(STOCK)
- * 22. MALE REVERSE ROD END M6 (STOCK)
- 23. SOCKET HEAD M8-30mm [SBT-M830] x 2



[R]

Longer end of **STUD BOLT (#19)** should go in the peg.

Flat side of **BEARING COLLAR SUS (#11)** should face **STEP PLATE (#2)**, with the rounded side facing out toward the brake pedal bearings.



[R]-SIDE

1. BASE PLATE [R] [D-MH9SP-L]
2. STEP PLATE [R] [D-MH9SP-R]
3. MASTER STAY [D-MH9T2MS]
4. HEEL GUARD [R] [HG-6R]
5. FOOT PEG [PEG]
6. FOOT PEG END CAP [ST-002]
7. BRAKE PEDAL 180-2 [BPD-6]
8. PEDAL TIP (DELRIN) [ST-001D18]
9. PEDAL STOPPER (DELRIN) [BPD-STOPPER]
10. ROD END COLLAR 12(BK) [RDED-CLR12]
11. BEARING COLLAR SUS [BGCLR-SUS]
12. SOCKET HEAD M5-20mm [SBT-M520]
13. SOCKET HEAD M6-15mm [SBT-M615] x 2
14. SOCKET HEAD M8-15mm [SBT-M815] x 2
15. BUTTON HEAD M6-20mm [BBT-M620] x 2
16. BUTTON HEAD M6-20mm [BBT-M620]
17. BUTTON HEAD M8-15mm [BBT-M815] x 2
18. FLAT HEAD M5-35mm [FBT-M535]
19. STUD BOLT M8-55mm [STBT-S]
20. WASHER M5 [WS-5]
21. PEG WASHER M8 [PWS-8]
22. NUT M5 [NUT-5] x 2
23. FLANGE NUT M8 [FNT-8]
24. MALE ROD END M5 [RDED-M5]
25. PUSH ROD [PRD]
26. RETURN SPRING 20 [RS-RSP2]
27. RETURN SPRING COLLAR(BK) [RS-RSLR2]
28. BRAKE LIGHT SWITCH P-1.0 [BSW-1]
29. SOCKET HEAD M8-30mm [SBT-M830] x 2
- *30. BUTTON HEAD M8-35mm [BBT-M835] x 2
- *31. COLLAR 20-8(BK) [CLR-20-8] x 2

* for gullarm swingarm models

Due to running improvements in the designs of Sato parts, some new replacement parts may look somewhat different than the original parts with the same part #. These slight differences are mostly cosmetic and have no effect on performance.