

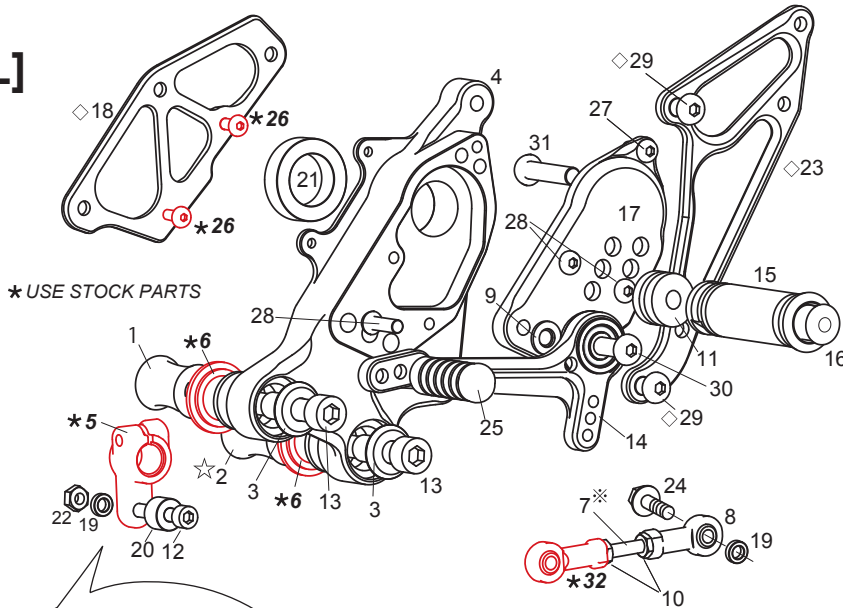
# DUCATI Multistrada ( '09)/ Hypermotard 1100 ( '12) REAR SETS

part# D-MULTIRS

## [L]-SIDE

1. COLLAR 10-32 (BK)
- ☆2. COLLAR 10-37 (BK)
3. RUBBER CENTER (SUS) ×2
4. BASE PLATE [L]
- ★5. CHANGE ARM (STOCK)
- ★6. RUBBER CUSHION (STOCK)
7. STUD BOLT M6×45mm
8. FEMALE ROD END M6
9. PEG WASHER M8
10. JAM NUT M6 ×2
11. FOOT PEG COLLAR 15
12. SOCKET HEAD M6×35mm
13. SOCKET HEAD M10×80mm (P-1.5) ×2
14. SHIFT PEDAL
15. FOOT PEG
16. FOOT PEG END CAP
17. STEP PLATE [L]
- ◇18. SPROCKET COVER (OPTION)
19. COLLAR 6-3 (GD) ×2
20. COLLAR 6-10 (BK)
21. COLLAR 25-5.5 (BK)
22. PLAIN NUT M6
- ◇23. HEEL GUARD [L] (OPTION)
24. FLANGE HEAD M6×20mm
25. PEDAL TIP (DELRIN)
- ★26. BUTTON HEAD M5×10mm (STOCK)
27. BUTTON HEAD M6×15mm
28. BUTTON HEAD M6×20mm ×3
- ◇29. BUTTON HEAD M8×10mm (OPTION)
30. BUTTON HEAD M8×30mm
31. BUTTON HEAD M8×35mm
- ★32. ROD END (STOCK)
33. SOCKET HEAD M6×25mm
34. SIDE STAND SPRING COVER 70
- ※ STUD BOLT M6×60mm (EXTRA)

[L]



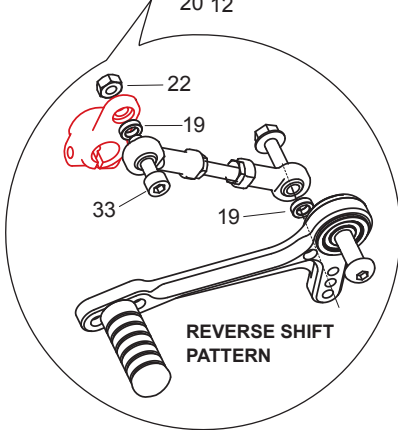
★ USE STOCK PARTS

Smooth front of **PEG WASHER M8 (#9)** should face Shift Pedal bearings, with the rougher, flat side facing **STEP PLATE (#17)**.

### ★ FOR HYPERMOTARD:

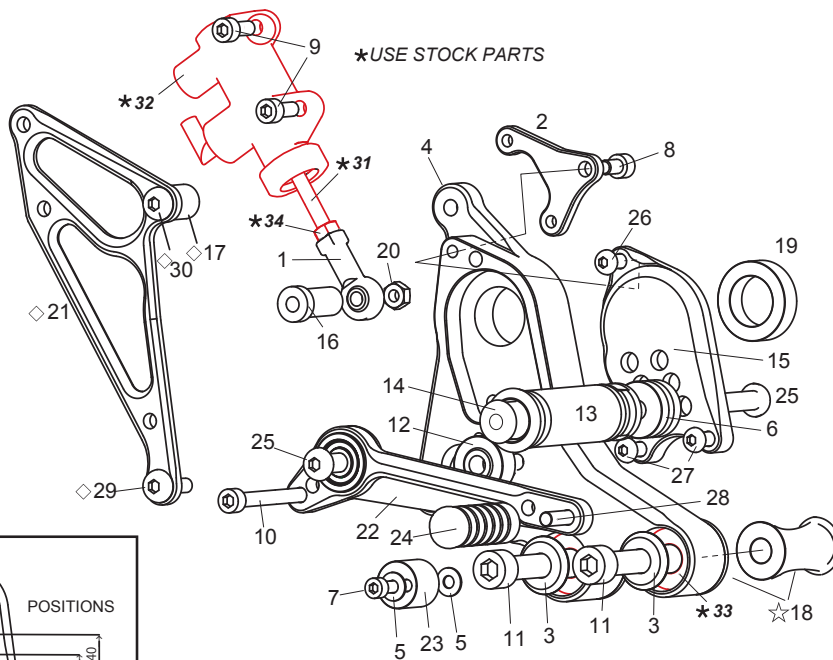
SWITCH COLLAR 10-43 ON THE RIGHT (BRAKE) SIDE (#18) WITH COLLAR 10-37 (#2).

※ You can use STUD BOLT M6×60mm in place of #7 STUD BOLT M6×45mm if the 45mm length one is not long enough for the shifter setup you are using.



REVERSE SHIFT PATTERN

[R]



★ USE STOCK PARTS

Flat side of **BEARING COLLAR 10 (#12)** should face **STEP PLATE (#4)**, with the stepped side facing out toward pedal bearing.

### FOR HYPERMOTARD:

☆ SWITCH COLLAR 10-37 ON THE LEFT (SHIFTER) SIDE (#2) WITH COLLAR 10-43 (#18).

## [R]-SIDE

1. FEMALE ROD END M6
2. MASTER BASE (BK)
3. RUBBER CENTER (SUS) ×2
4. BASE PLATE [R]
5. PLAIN WASHER M5 ×2
6. FOOT PEG COLLAR 15
7. SOCKET HEAD M5×30mm
8. SOCKET HEAD M6×10mm
9. SOCKET HEAD M6×15mm ×2
10. SOCKET HEAD M6×55mm
11. SOCKET HEAD M10×80mm (P-1.5) ×2
12. FOOT PEG BEARING COLLAR 10
13. FOOT PEG
14. FOOT PEG END CAP
15. STEP PLATE [R]
16. COLLAR 6-30 (BK)
- ◇17. COLLAR 8-15 (OPTION)
- ☆18. COLLAR 10-43 (BK) ×2
19. COLLAR 25-11 (BK)
20. PLAIN NUT M6
- ◇21. HEEL GUARD [R] (OPTION)
22. BRAKE PEDAL (BPD11)
23. BRAKE PEDAL STOPPER (DELRIN)
24. PEDAL TIP (DELRIN)
25. BUTTON HEAD M8×35mm ×2
26. BUTTON HEAD M6×15mm
27. BUTTON HEAD M6×20mm ×2
28. BUTTON HEAD M6×20mm
- ◇29. BUTTON HEAD M8×10mm (OPTION)
- ◇30. BUTTON HEAD M8×25mm (OPTION)
- ★31. PUSH ROD (STOCK)
- ★32. REAR MASTER CYLINDER (STOCK)
- ★33. RUBBER CUSHION (STOCK)
- ★34. PLAIN NUT (STOCK)

Not Pictured:

Brake Light Switch P-1.0 [BSW-1]

