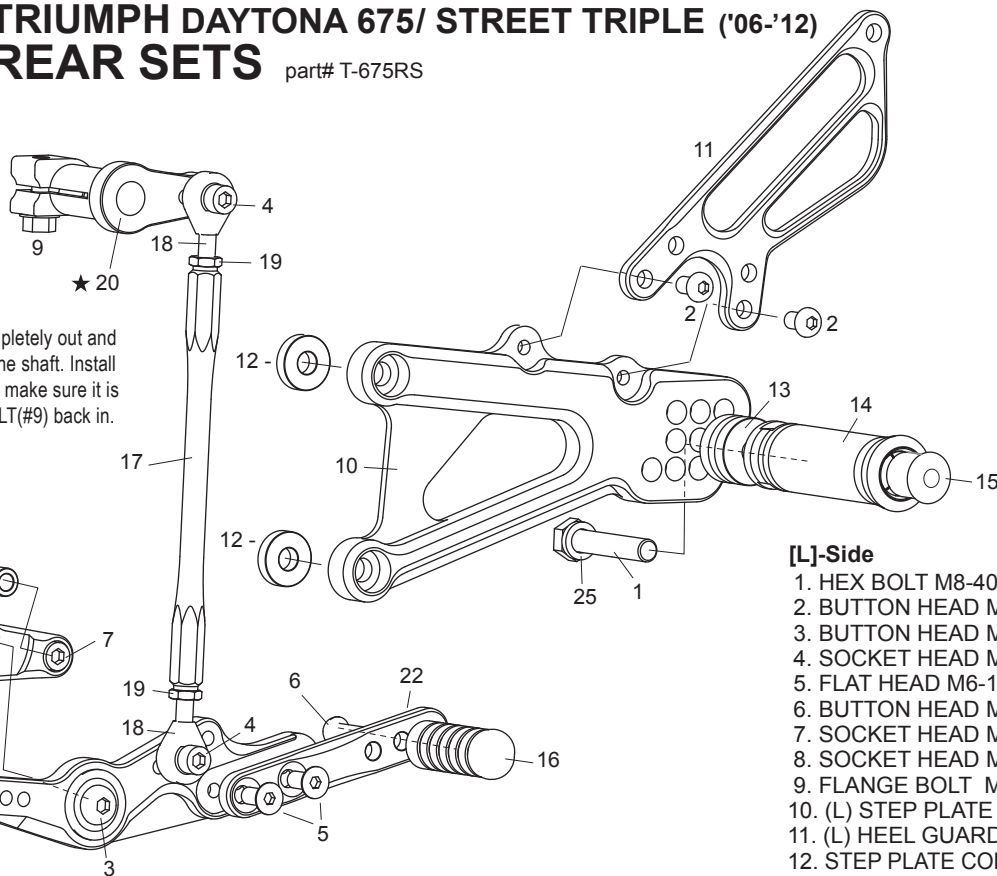


[L]



★ Take the FLANGE BOLT(#9) completely out and put the CHANGE ARM(#20) on the shaft. Install the CHANGE ARM all the way to make sure it is in. Then, install the FLANGE BOLT(#9) back in.

[L]-Side

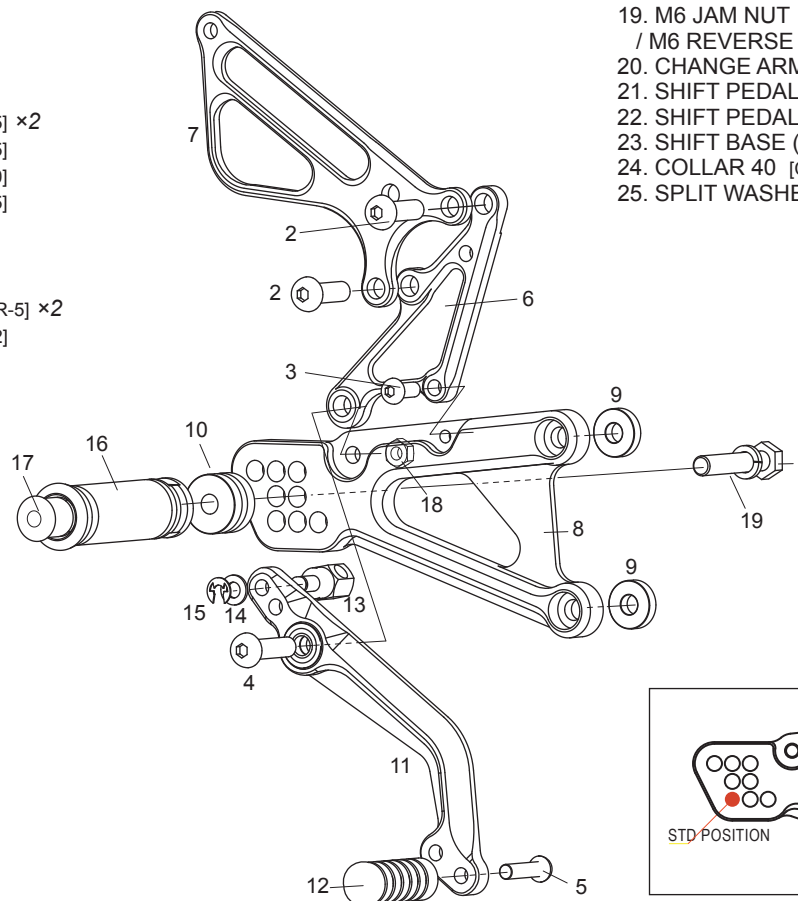
1. HEX BOLT M8-40mm [HBT-M840]
2. BUTTON HEAD M6-10mm [BBT-M610] ×2
3. BUTTON HEAD M8-25mm [BBT-M825]
4. SOCKET HEAD M6-15mm [SBT-M615] ×2
5. FLAT HEAD M6-10mm [FBT-M610] ×2
6. BUTTON HEAD M6-25mm [BBT-M625]
7. SOCKET HEAD M6-70mm [SBT-M670]
8. SOCKET HEAD M6-35mm [SBT-M635] ×2
9. FLANGE BOLT M6-20mm [FGBT-M620]
10. (L) STEP PLATE [T-675SP-L]
11. (L) HEEL GUARD [HG-14L]
12. STEP PLATE COLLAR 5(BK) [BPCLR-5] ×2
13. FOOT PEG COLLAR 12 [PEGCLR-12]
14. FOOT PEG [PEG]
15. FOOT PEG END CAP [ST-002]
16. PEDAL TIP (DELRIN) [ST-001D]
17. SHIFT ROD 150 (BK) [SRD-150]
18. M6 MALE ROD END [RDED-M6]
/ M6 MALE REVERSE ROD END [RDED-M6L]
19. M6 JAM NUT [JNT-6]
/ M6 REVERSE JAM NUT [JNT-6L]
20. CHANGE ARM(BK) [CA-5]
21. SHIFT PEDAL SPD11(BK) [SPD-11]
22. SHIFT PEDAL SPD8(BK) [SPD-8]
23. SHIFT BASE (BK) [SB-T1]
24. COLLAR 40 [CLR-40-6]
25. SPLIT WASHER M8 [SWS-8]

[R]

P-1.25 brake light switch included.

[R]-Side

1. HEX BOLT M8-40mm [HBT-M840]
2. BUTTON HEAD M8-25mm [BBT-M825] ×2
3. BUTTON HEAD M6-15mm [BBT-M615]
4. BUTTON HEAD M8-30mm [BBT-M830]
5. BUTTON HEAD M6-25mm [BBT-M625]
6. MASTER STAY [T-675MS]
7. (R) HEEL GUARD [HG-18R]
8. (R) STEP PLATE [T-675SP-R]
9. STEP PLATE COLLAR 5(BK) [BPCLR-5] ×2
10. FOOT PEG COLLAR 12 [PEGCLR-12]
11. BRAKE PEDAL [BPD-8]
12. PEDAL TIP (DELRIN) [ST-001D]
13. BRAKE ROD SS [BRD-SS]
14. PLAIN WASHER M6 [WS-6]
15. E CLIP M6 [ECP-6]
16. FOOT PEG [PEG]
17. FOOT PEG END CAP [ST-002]
18. PLAIN NUT M8 [NUT-8]
19. SPLIT WASHER M8 [SWS-8]



POSITIONS

1	20mm Forward	0mm
2	10mm Forward	0mm
3	10mm Forward	10mm Up
4	10mm Forward	20mm Up
5	0mm	0mm
6	0mm	10mm Up
7	0mm	20mm Up
8	10mm Back	20mm Up

note: all measurements are in relation to stock position (0 mm).