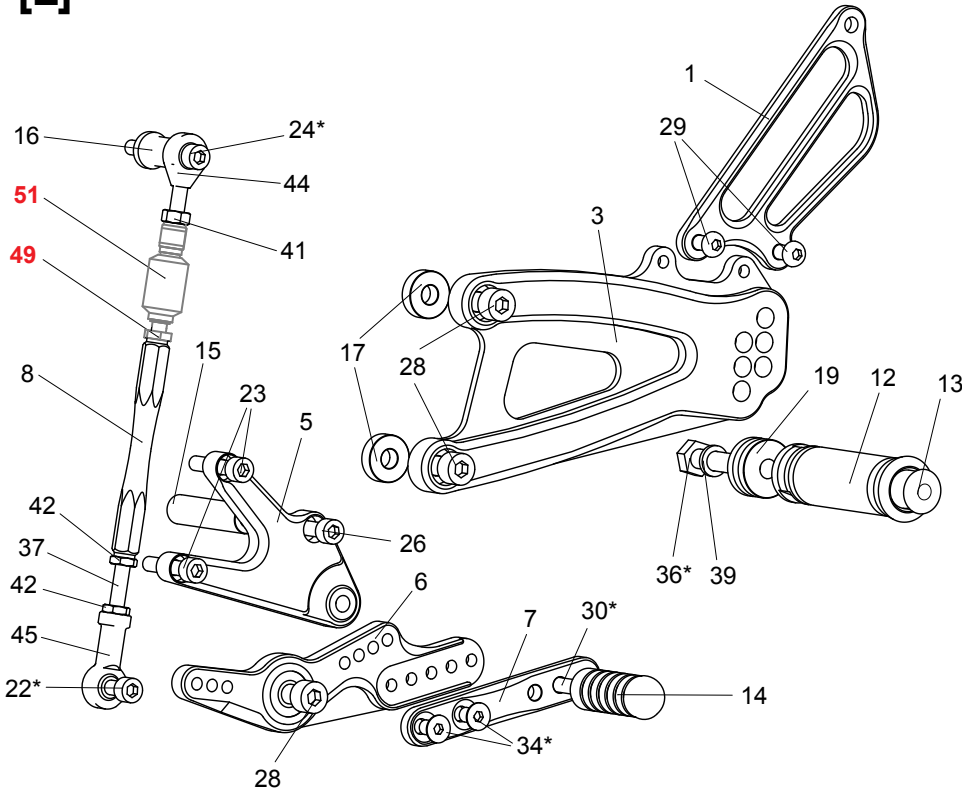


TRIUMPH DAYTONA 675/R ('13-) REAR SETS (PART# T-67513RS)

[L]

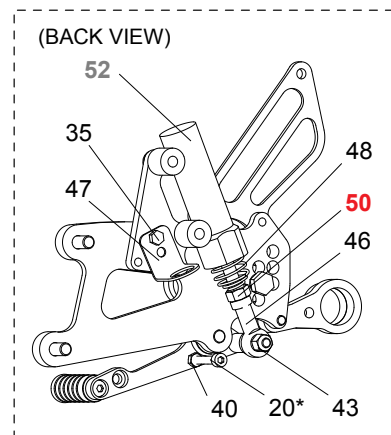
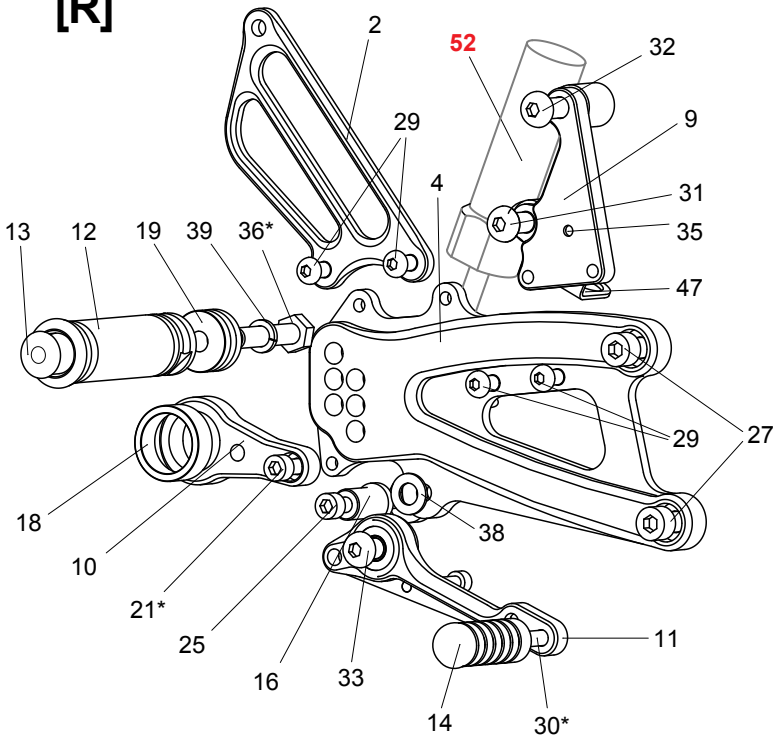


1. [L] HEEL GUARD [HG-2L]
2. [R] HEEL GUARD [HG-2R]
3. [L] STEP PLATE [T-67513SP-L]
4. [R] STEP PLATE [T-67513SP-R]
5. SHIFT BASE (BK) [SB-T2]
6. SHIFT PEDAL SPD11 (BK) [SPD-11]
7. SHIFT PEDAL SPD8 (BK) [SPD-8B]
8. SHIFT ROD 90 (BK) [SRD-90B]
9. MASTER BASE (BK) [T-67513MB]
10. CANISTER BRACKET (BK) [CANBT-T1]
11. BRAKE PEDAL [BPD-15]
12. FOOT PEG [PEG] (x2)
13. FOOT PEG END CAP [ST-002] x2
14. PEDAL TIP (DELRIN) [ST-001D] x2
15. COLLAR 50-6 [CLR-50-6]
16. ROD END COLLAR 23 [RDED-CLR23] x2
17. BASE PLATE COLLAR 6 (BK) [BPCLR-6] x2
18. COLLAR 10-24 (BK) [CLR-10-24]
19. PEG COLLAR 12 [PEGCLR-12]
20. SOCKET HEAD M5×35mm [SBT-M535]
21. SOCKET HEAD M6×15mm [SBT-M615]
22. SOCKET HEAD M6×18mm [SBT-M618]
23. SOCKET HEAD M6×30mm [SBT-M630] x2
24. SOCKET HEAD M6×45mm [SBT-M645]
25. SOCKET HEAD M6×50mm [SBT-M650]
26. SOCKET HEAD M6×80mm [SBT-M680]
27. SOCKET HEAD M8×20mm [SBT-M820] x2
28. SOCKET HEAD M8×25mm [SBT-M825] x3
29. SOCKET HEAD M6×10mm [BBT-M610] x6
30. BUTTON HEAD M6×20mm [BBT-M620]
31. BUTTON HEAD M8×15mm [BBT-M815]
32. BUTTON HEAD M8×20mm [BBT-M820]
33. BUTTON HEAD M8×25mm [BBT-M825]
34. FLAT HEAD M6×10mm [FBT-M610] (x2)
35. HEX HEAD M5-8 [HBT-M58]
36. HEX HEAD M8×40mm [HBT-M840] x2
37. REVERSE STUD M6×45 [STUD-M6L]
38. PEG WASHER [PWS-8]
39. SPLIT WASHER M8 [SWS-8] x2
40. NUT M5 [NUT-5]
41. NUT M6 [NUT-6]
42. REVERSE JAM NUT M6 [JNT-6L] x2
43. LOCK NUT M6 [LNT-6]
44. MALE ROD END M6 [JNT-6]
45. FEMALE REVERSE ROD END M6 [RDED-F6L]
46. FEMALE ROD END 6-M8 [RDED-F6-8]
47. PULL SWITCH STAY 16 [PSTAY-16]
48. RETURN SPRING 40 [RS-RSP]

- ★ 49. NUT
- ★ 50. NUT
- ★ 51. QUICK SHIFTER SWITCH
- ★ 52. MASTER CYLINDER

★ STOCK TRIUMPH PART

[R]



* Apply threadlocker (Loctite or similar)