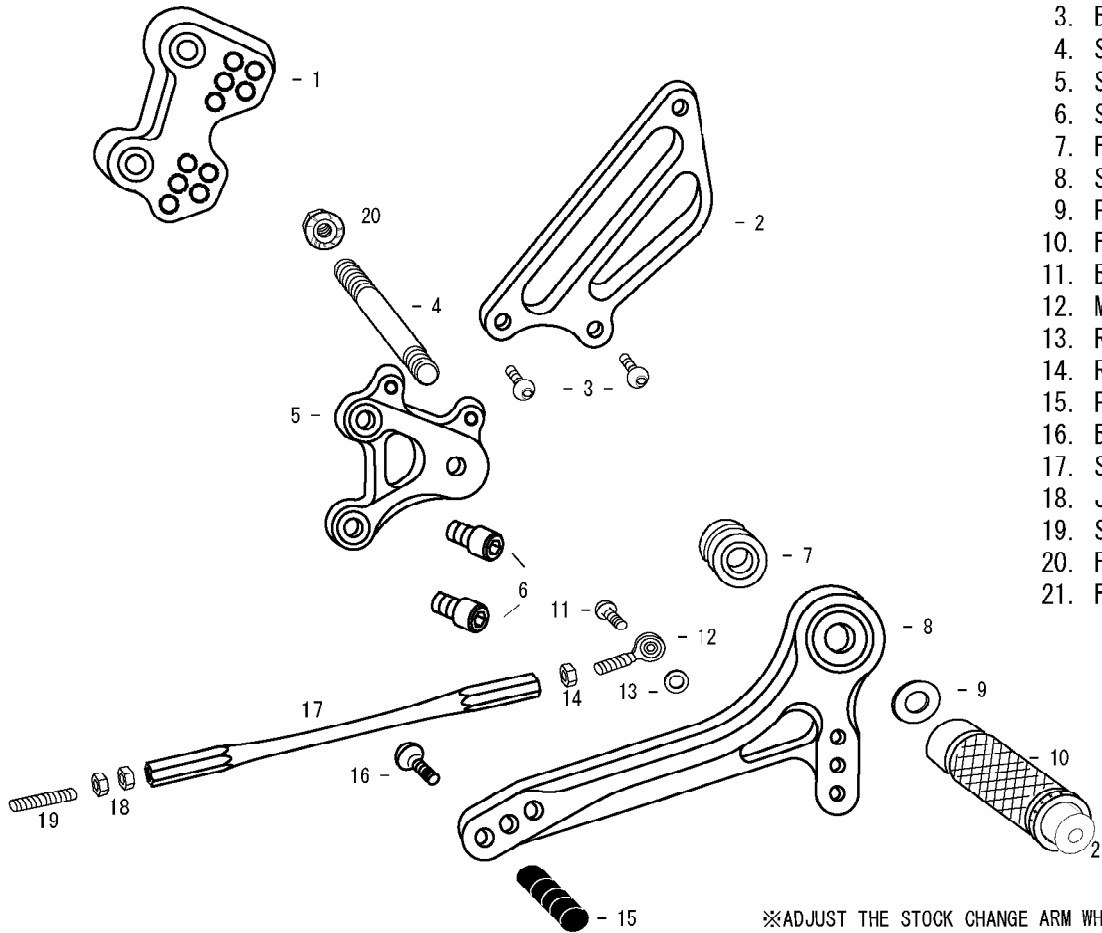


GSX-R1000, 750, 600 (L)

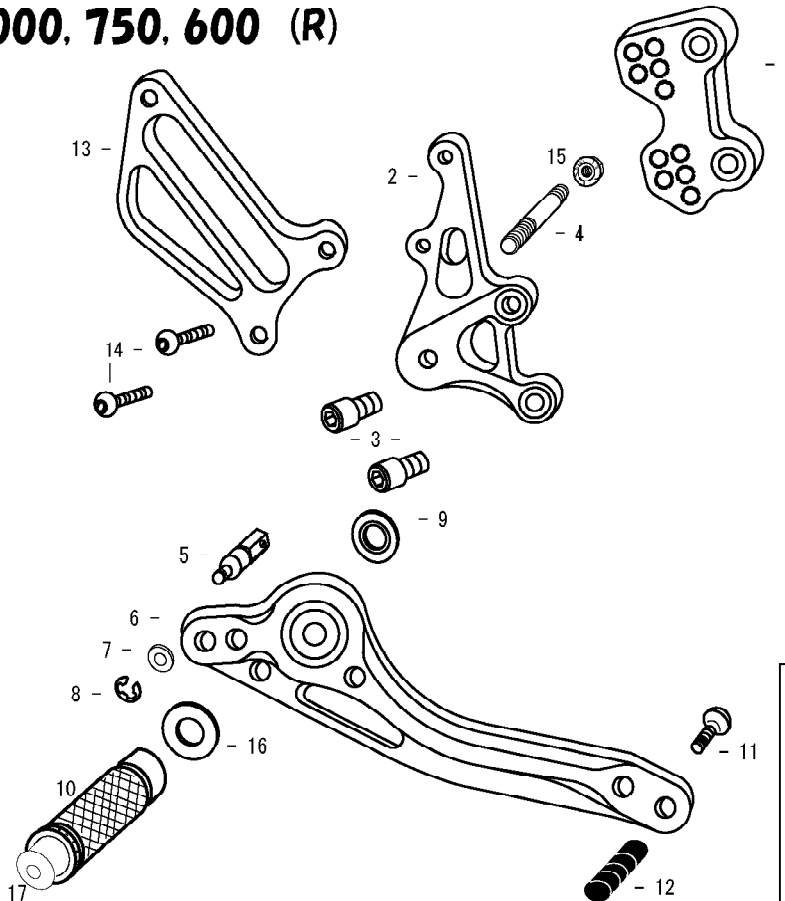


1. BASE PLATE [L]
2. HEEL GUARD [L] (HG2)
3. BUTTON HEAD M6×10mm ×2
4. STUD BOLT LONG
5. STEP PLATE [L]
6. SOCKET HEAD M8×15mm ×2
7. FOOT PEG BEARING COLLAR 12.5
8. SHIFT PEDAL 60 (SPD1)
9. PEG WASHER M8
10. FOOT PEG
11. BUTTON HEAD M6×20mm
12. MALE REVERSE ROD END M6
13. ROD END COLLAR 3
14. REVERSE JAM NUT M6
15. PEDAL TIP DELRIN
16. BUTTON HEAD M6×20mm
17. SHIFT ROD 150
18. JAM NUT M6
19. STUD M6
20. FLANGE NUT M8
21. FOOT PEG END CAP



※ADJUST THE STOCK CHANGE ARM WHEN INSTALLING SATO REAR SETS.

GSX-R1000, 750, 600 (R)



1. BASE PLATE [R]
2. STEP PLATE [R]
3. SOCKET HEAD M8×15mm ×2
4. STUD BOLT SHORT
5. BRAKE ROD M40
6. BRAKE PEDAL 150 (BPD1)
7. PLAIN WASHER M6
8. E CLIP M6
9. BEARING COLLAR SUS
10. FOOT PEG
11. BUTTON HEAD M6×25mm
12. PEDAL TIP DELRIN
13. HEEL GUARD [R] (HG1)
14. BUTTON HEAD M6×25mm
15. FLANGE NUT M8
16. PEG WASHER M8
17. FOOT PEG END CAP

POSITIONS		
1	0mm	35mm Up
2	0mm	25mm Up
3	0mm	15mm Up
4	10mm Back	35mm Up
5	10mm Back	25mm Up

All measurements are in relation to stock position (0 mm)