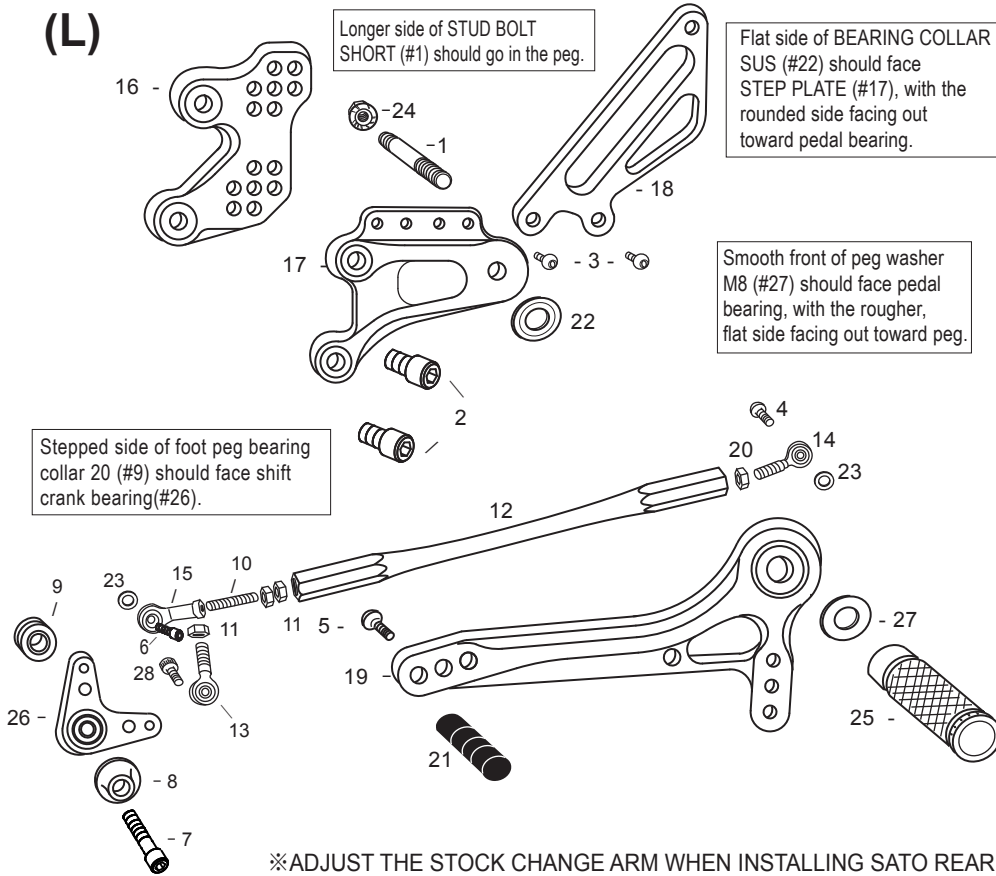
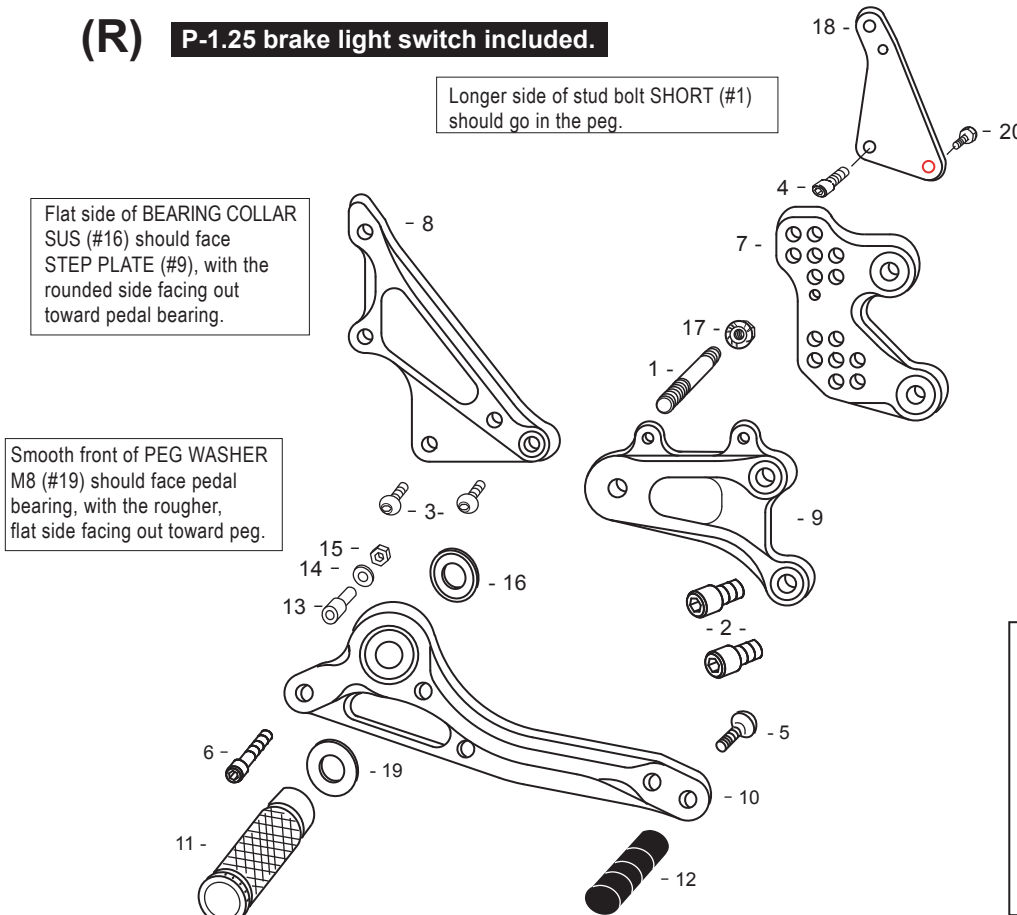


HONDA CBR1000RR '04-'07 REAR SETS (Ver. 1 Design)



1. STUD BOLT SHORT (M8x55mm) [STBT-S]
2. SOCKET HEAD M8x15mm [SBT-M815] x2
3. BUTTON HEAD M6x10mm [BBT-M610] x2
4. BUTTON HEAD M6x20mm [BBT-M620]
5. BUTTON HEAD M6x20mm [BBT-M620]
6. SOCKET HEAD M6x20mm [SBT-M620]
7. SOCKET HEAD M8x50mm [SBT-M850]
8. BEARING BOLT COVER
9. BEARING COLLAR 20(BK) [BGCLR-20]
10. STUD M6 [STUD-M6]
11. JAM NUT M6 [JNT-6] x3
12. SHIFT ROD 190 [SRD-190]
13. MALE ROD END M6 [RDED-M6]
14. REVERSE MALE ROD END M6 [RDED-M6L]
15. FEMALE ROD END M6 [RDED-F6]
16. (L) BASE PLATE
17. (L) STEP PLATE
18. (L) HEEL GUARD [HG-8L]
19. SHIFT PEDAL 70 [SPD-2]
20. REVERSE JAM NUT M6 [JNT-6L]
21. PEDAL TIP (DELFIN) [ST-001D]
22. BEARING COLLAR SUS [BGCLR-SUS]
23. ROD END COLLAR 3(GD) [RDED-CLR3] x2
24. FLANGE NUT M8 [FNT-8]
25. FOOT PEG [PEG]
26. SHIFT CRANK (BK) [SK-1]
27. PEG WASHER M8 [PWS-8]
28. SOCKET HEAD M6x15mm [SBT-M615]

(R) P-1.25 brake light switch included.



1. STUD BOLT SHORT (M8x55mm) [STBT-S]
2. SOCKET HEAD M8x15mm [SBT-M815] x2
3. BUTTON HEAD M6x10mm [BBT-M610] x2
4. SOCKET HEAD M6x15mm [SBT-M615]
5. BUTTON HEAD M6x25mm [BBT-M625]
6. SOCKET HEAD M6x40mm [SBT-M640]
7. (R) BASE PLATE
8. MASTER STAY
9. (R) STEP PLATE
10. BRAKE PEDAL 130 [BPD-7]
11. FOOT PEG [PEG]
12. PEDAL TIP (DELFIN) [ST-001D]
13. BRAKE ROD COLLAR 22(BK) [RDED-CLR22]
14. WASHER M6 [WS-6]
15. NUT M6 [NUT-6]
16. BEARING COLLAR SUS [BGCLR-SUS]
17. FLANGE NUT M8 [FNT-8]
18. GUARD STAY (BK)
19. PEG WASHER M8 [PWS-8]
20. FLANGE BOLT M6x10mm [FGBT-M610]

POSITIONS		
1	0mm	10mm Up
2	10mm Back	10mm Up
3	0mm	20mm Up
4	10mm Back	20mm Up
5	20mm Back	20mm Up
6	10mm Back	30mm Up
7	20mm Back	30mm Up

All measurements are in relation to stock position (0 mm)