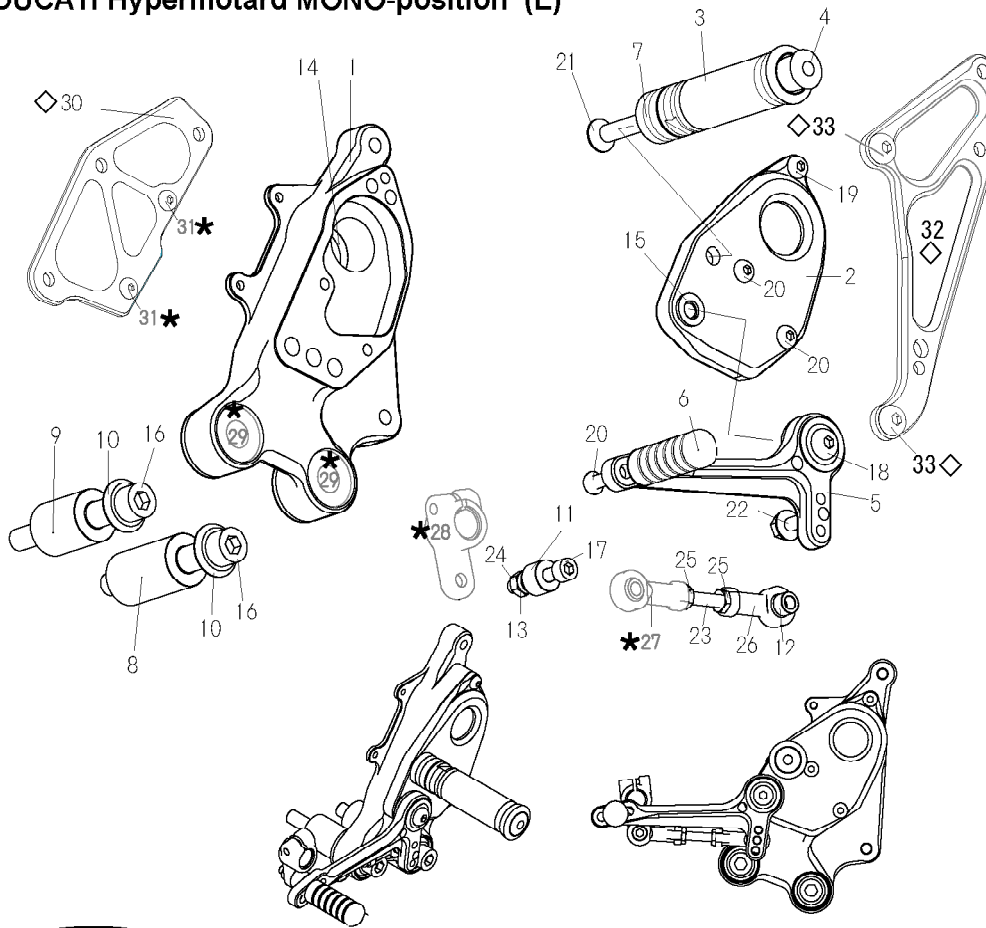


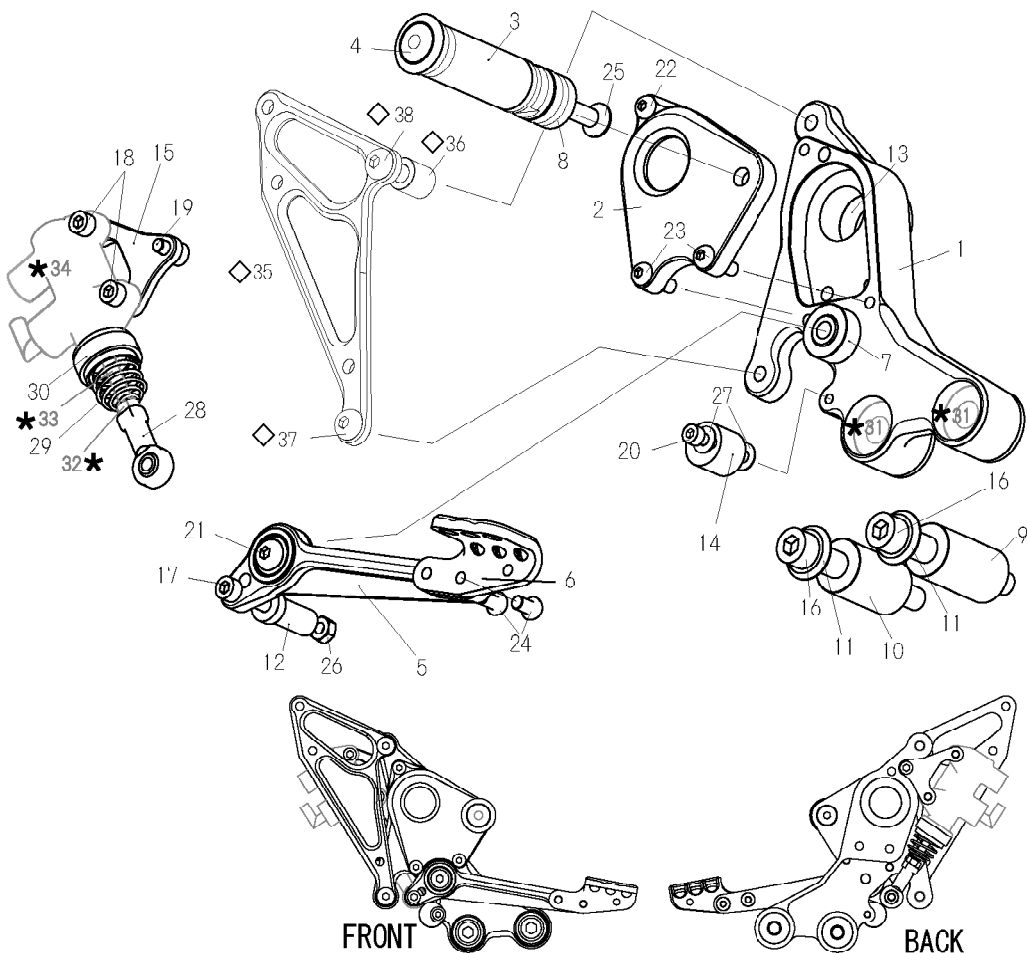
DUCATI Hypermotard MONO-position (L)



1. BASE PLATE [L]
2. STEP PLATE [L]
3. FOOT PEG
4. FOOT PEG END CAP
5. SHIFT PEDAL (SPD12)
6. PEDAL TIP DELRIN
7. FOOT PEG COLLAR 15
8. COLLAR 43 (BK)
9. COLLAR 32 (BK)
10. RUBBER CENTER ×2
11. COLLAR 10 (BK)
12. ROD END COLLAR 6
13. ROD END COLLAR 3
14. COLLAR 5.5 (BK)
15. PEG WASHER M8
16. SOCKET HEAD M10×80 P1.5 ×2
17. SOCKET HEAD M6×35
18. BUTTON HEAD M8×25
19. BUTTON HEAD M6×15
20. BUTTON HEAD M6×20 ×3
21. FLAT HEAD M8×35
22. FLANGE HEAD M6×25
23. STUD BOLT M6
24. PLAIN NUT M6
25. JAM NUT M6 ×2
26. FEMALE ROD END M6
- *27. FEMALE ROD END (STOCK)
- *28. CHANGE ARM (STOCK)
- *29. RUBBER CUSHION (STOCK) ×2
- ◇30. SPROCKET COVER (OPTION)
- *31. BOLT (STOCK)
- ◇32. HEEL GUARD [L] (OPTION)
- ◇33. BUTTON HEAD M8×10 (OPTION) ×2



DUCATI Hypermotard MONO-position (R)



1. BASE PLATE [R]
2. STEP PLATE [R]
3. FOOT PEG
4. FOOT PEG END CAP
5. BRAKE PEDAL (BPD11)
6. BRAKE PEDAL
7. FOOT PEG BEARING COLLAR 10
8. FOOT PEG COLLAR 15
9. COLLAR 43 (BK)
10. COLLAR 37 (BK)
11. RUBBER CENTER ×2
12. COLLAR 30 (BK)
13. COLLAR 11 (BK)
14. BRAKE PEDAL STOPPER DELRIN
15. MASTER BASE
16. SOCKET HEAD M10×80 P1.5 ×2
17. SOCKET HEAD M6×55
18. SOCKET HEAD M6×15 ×2
19. SOCKET HEAD M6×10
20. SOCKET HEAD M5×30
21. BUTTON HEAD M8×35
22. BUTTON HEAD M6×15
23. BUTTON HEAD M6×20 ×2
24. BUTTON HEAD M6×10 ×2
25. FLAT HEAD M8×35
26. PLAIN NUT M6
27. WASHER M5 ×2
28. FEMALE ROD END M6
29. RETURN SPRING L40
30. SPRING RETAINER (BK)
- *31. RUBBER CUSHION (STOCK) ×2
- *32. PLAIN NUT (STOCK)
- *33. PUSH ROD (STOCK)
- *34. REAR MASTER CYLINDER (STOCK)
- ◇35. HEEL GUARD [R] (OPTION)
- ◇36. COLLAR 15 (OPTION)
- ◇37. BUTTON HEAD M6×10 (OPTION)
- ◇38. BUTTON HEAD M8×25 (OPTION)