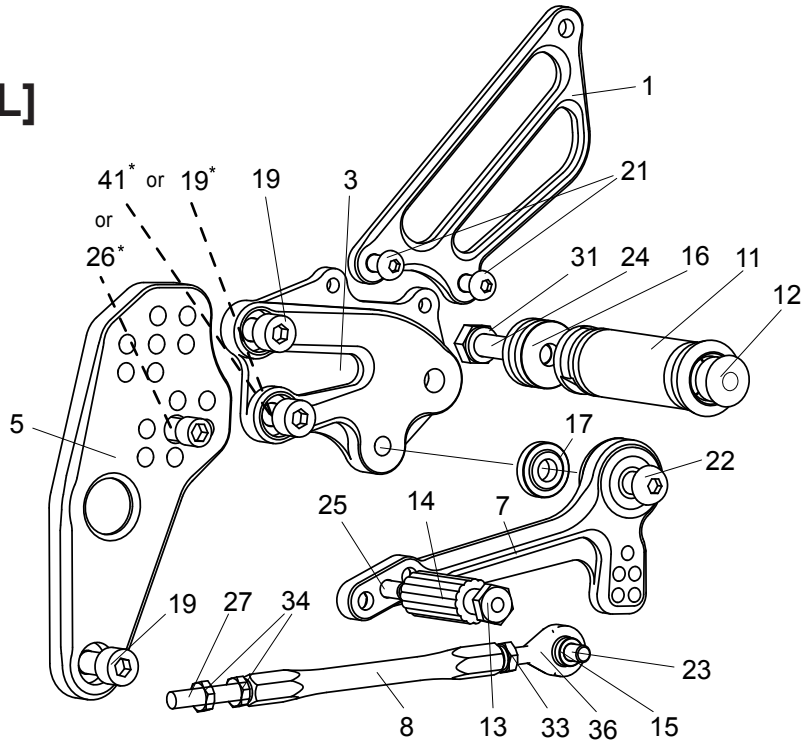


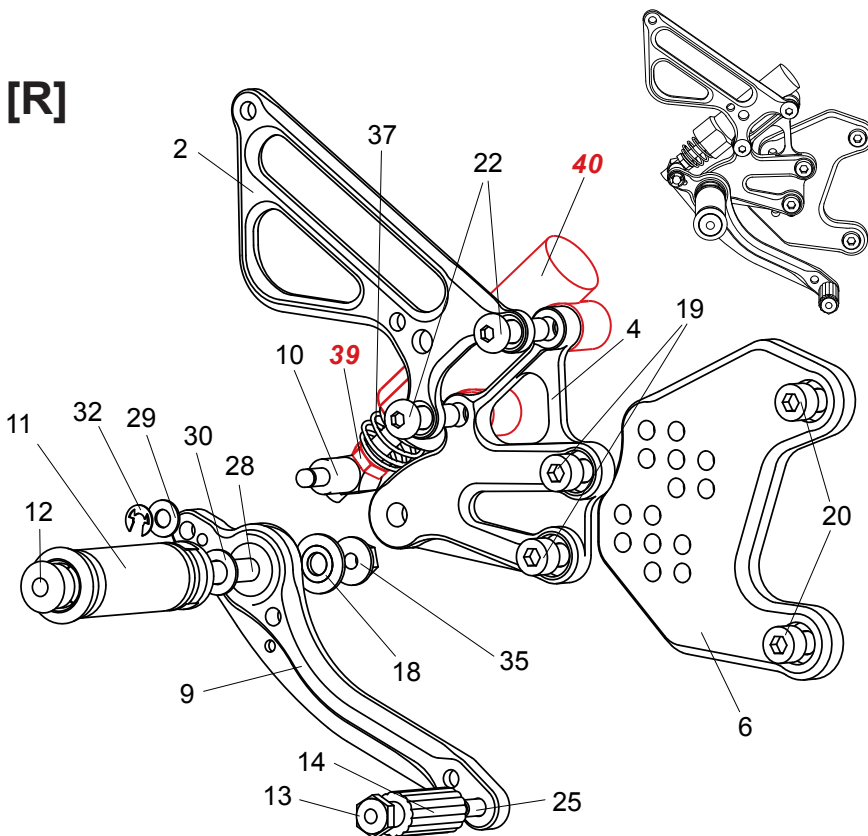
[L]



NOTE: Installation requires removal of interfering part of sprocket cover.

* Bolt size used depends on position. If using Position 4, omit **NARROW SOCKET HEAD M8 x 15mm (#26)** and replace **SOCKET HEAD M8 x 15mm (#19)** in the **STEP PLATE's** lower hole with **SOCKET HEAD M8 x 25mm (#41)**.

[R]



1. (L) HEEL GUARD [HG-2L]
2. (R) HEEL GUARD [HG-18R]
3. (L) STEP PLATE [K-ZX613SP-L]
4. (R) STEP PLATE [K-ZX613SP-R]
5. (L) BASE PLATE (BK) K-25018RCBP-LB]
6. (R) BASE PLATE (BK) [K-25018RCBP-RB]
7. SHIFT PEDAL [SPD-0912]
8. SHIFT ROD 110 (BK) [SRD-110B]
9. BRAKE PEDAL [BPD165-30]
10. BRAKE ROD [BRD-M40]
11. FOOT PEG [PEG] x 2
12. FOOT PEG END CAP [ST-002] x 2
13. PEDAL TIP (ALUM)(GD) [ST-001RG] x 2
14. RUBBER SLEEVE [ST-001R-SL] x 2
15. ROD END COLLAR 3 (GD) [RDED-CLR3]
16. PEG COLLAR 12 (GD) [PEGCLR-12]
17. BEARING COLLAR 5S(BK) [PEGBGCLR-5SB]
18. BEARING COLLAR SUS [BGCLR-SUS]
19. SOCKET HEAD M8x15mm [SBT-M815] x 5
20. SOCKET HEAD M8x20mm [SBT-M820] x 2
21. BUTTON HEAD M6x10mm [BBT-M610] x 2
22. BUTTON HEAD M8x30mm [BBT-M830] x 3
23. HEX HEAD M6x20mm [HBT-M620]
24. HEX HEAD M8x40mm [HBT-M840]
25. LOW SOCKET HEAD M6x15mm [LSBT-M615] x 2
26. NARROW SOCKET HEAD M8x15mm [SBT-M815S]
27. REVERSE STUD M6 [STUD-M6L]
28. STUD BOLT M8x50mm [STBT-50]
29. WASHER M6 [WS-6]
30. PEG WASHER [PWS-8]
31. SPLIT WASHER M8 [SWS-8]
32. E-CLIP M6 [ECP-6]
33. JAM NUT M6 [JNT-6]
34. REVERSE JAM NUT M6 [JNT-6L] x 2
35. FLANGE NUT M8 [FNT-8]
36. MALE ROD END M6 [RDED-M6]
37. RETURN SPRING 20 [RS-RSP2]
39. NUT (KAWASAKI PART)
40. MASTER CYLINDER (KAWASAKI PART)
- * 41. SOCKET HEAD M8x25mm [SBT-M825]

