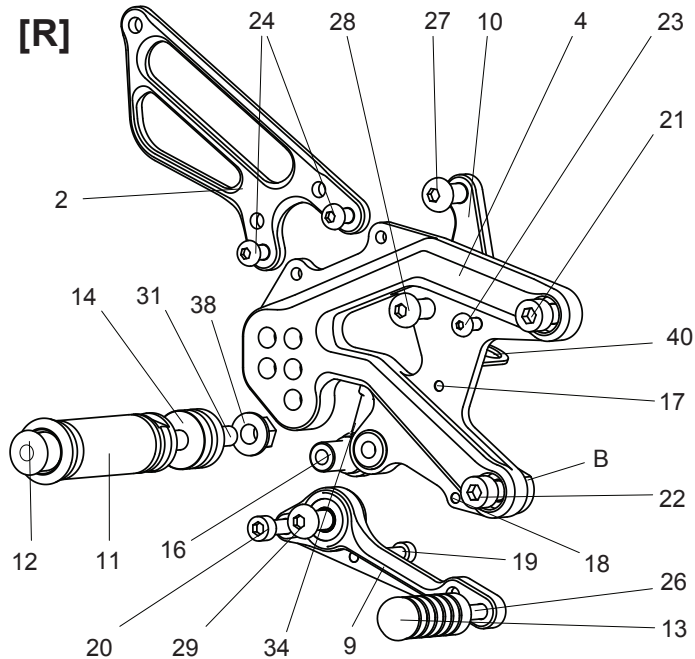


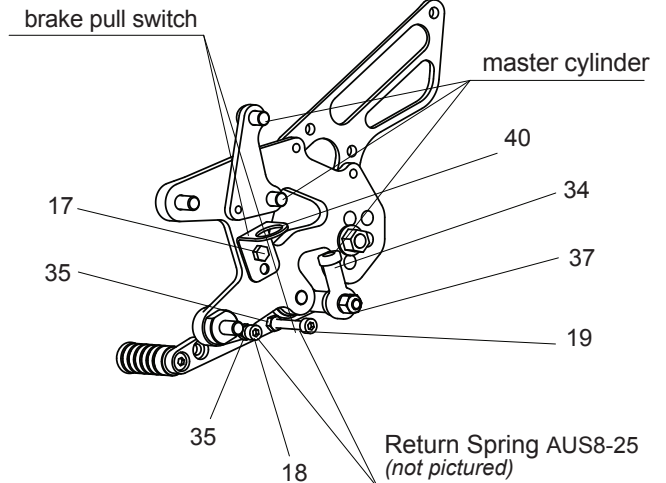
KAWASAKI NINJA H2 ('15-) REVERSE SHIFT REAR SETS

part# K-H2RSR

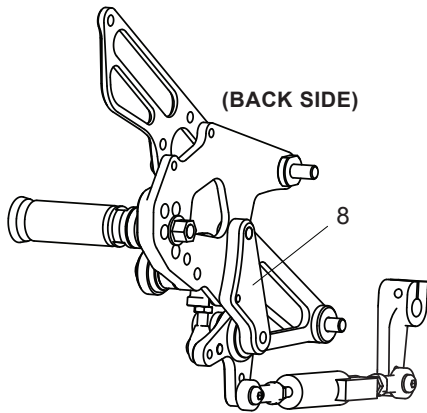
[R]



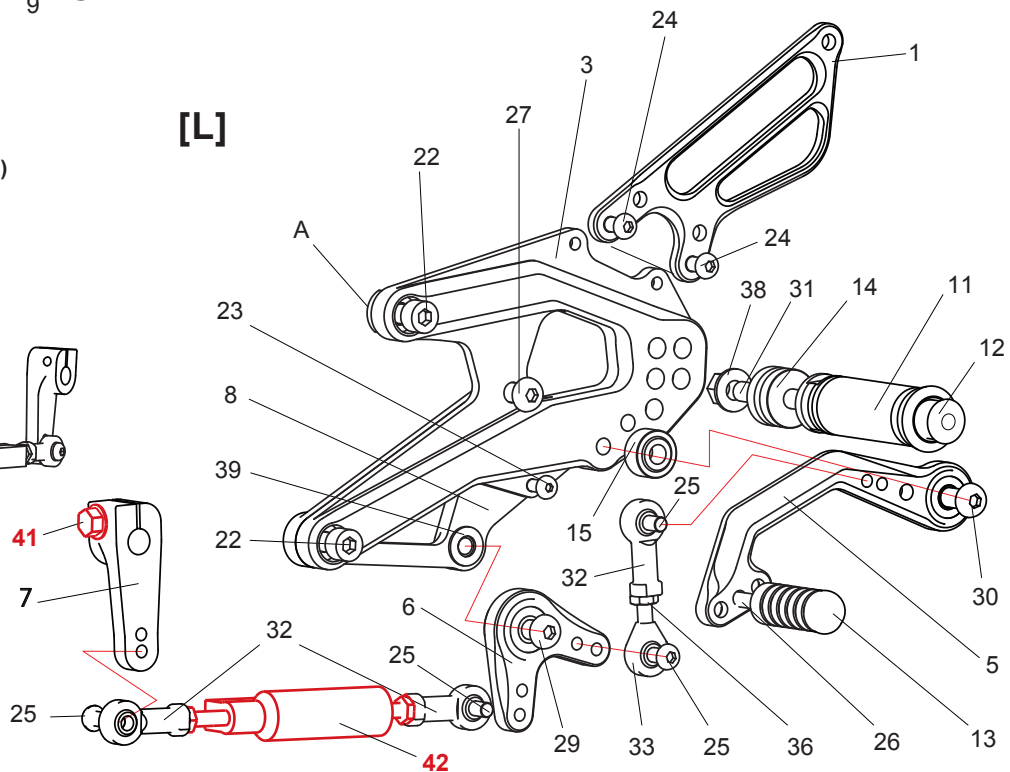
(BACK SIDE)



(BACK SIDE)



[L]



1. (L) HEEL GUARD [HG-3L]
2. (R) HEEL GUARD [HG-3R]
3. (L) STEP PLATE [K-H2SP-L]
4. (R) STEP PLATE [K-H2SP-R]
5. SHIFT PEDAL [SPD-SCP33]
6. V LINK (BK) [VLINK]
7. CHANGE ARM (BK) [CA-SS45]
8. SHIFT BASE (BK) [SB-H2]
9. BRAKE PEDAL [BPD-SBP145]
10. MASTER BASE (BK) [K-H2MB]
11. FOOT PEG [PEG] x 2
12. FOOT PEG END CAP [ST-002] x 2
13. PEDAL TIP (DELRIN) [ST-001D] x 2
14. FOOT PEG COLLAR 15 [PEGCLR-15] x 2
15. BEARING COLLAR 10s (BK) [PEGBGLR-10SB]

16. COLLAR 23-6 (BK) [RDEDCLR-23]
17. HEX BOLT M5x6mm [SBT-M56]
18. SOCKET HEAD M5x15mm [SBT-M515]
19. SOCKET HEAD M5x35mm [SBT-M535]
20. SOCKET HEAD M6x50mm [SBT-M650]
21. SOCKET HEAD M8x15mm [SBT-M815]
22. SOCKET HEAD M8x25mm [SBT-M825] x 3
23. BUTTON HEAD M5x10mm [BBT-M510] x 2
24. BUTTON HEAD M6x10mm [BBT-M610] x 4
25. BUTTON HEAD M6x18mm [BBT-M618] x 4
26. BUTTON HEAD M6x20mm [BBT-M620] x 2
27. BUTTON HEAD M8x15mm [BBT-M815] x 2
28. BUTTON HEAD M8x20mm [BBT-M820]
29. BUTTON HEAD M8x25mm [BBT-M825] x 2
30. BUTTON HEAD M8x35mm [BBT-M835]

31. STUD BOLT M8x50mm [STBT-50] x 2
 32. FEMALE ROD END M6 [RDED-F6] x 3
 33. MALE ROD END M6 [RDED-M6]
 34. FEMALE ROD END 6-M8 [RDED-F6-8]
 35. NUT M5 [NUT-5] x 2
 36. JAM NUT M6 [JNT-6]
 37. LOCK NUT M6 [LNT-6]
 38. FLANGE NUT M8S [FNT-8S] x 2
 39. PEG WASHER M8 [PWS-8]
 40. PULL SWITCH STAY 16 [PSTAY-16]
 41. FLANGE HEAD BOLT (KAWASAKI PART)
 42. SHIFTER SWITCH (KAWASAKI PART)
- A. COLLAR 5-M10-8 (BK) (pre-installed)
 B. COLLAR 7-M10-8 (BK) (pre-installed)
 - RETURN SPRING AUS8-25 (not pictured)