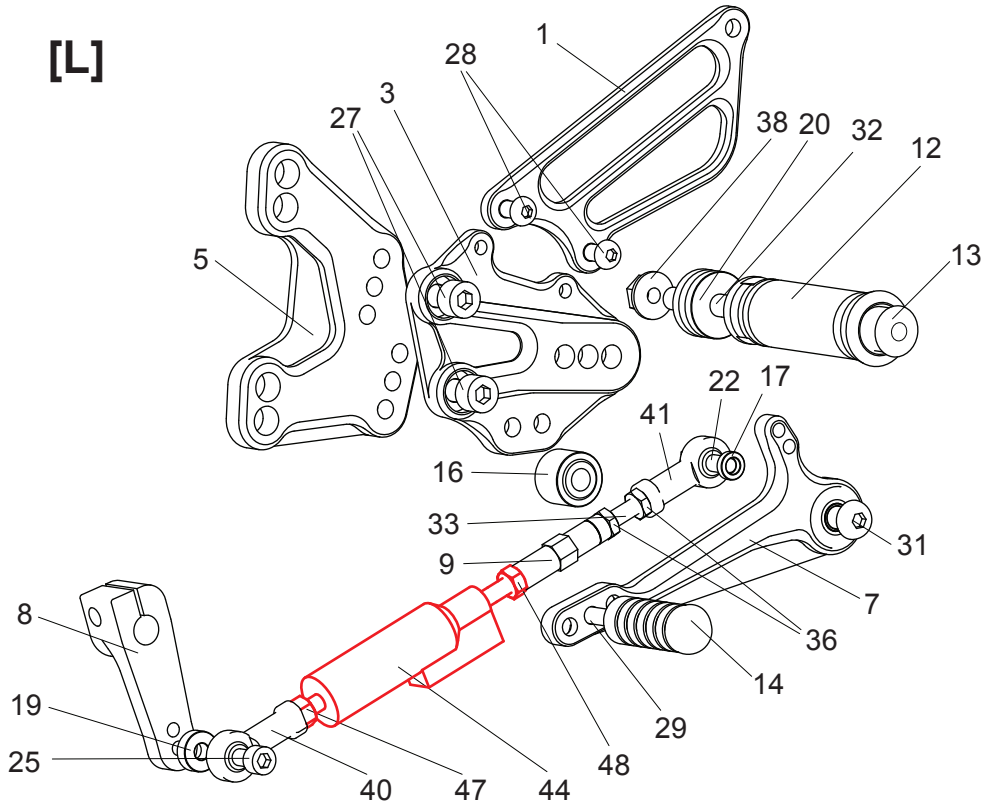


KAWASAKI ZX-10R ('16-) REVERSE SHIFT REAR SETS

(part# K-ZX1016RSR)

[L]



1. [L] HEEL GUARD [HG-2L]
2. [R] HEEL GUARD [HG-2R]
3. [L] STEP PLATE [H-CBR609ASP-L]
4. [R] STEP PLATE [H-CBR109ASP-R]
5. [L] BASE PLATE [K-ZX1011BP-L]
6. [R] BASE PLATE [K-ZX1011BP-R]
7. SHIFT PEDAL [SPD-SCP70]
8. SHIFT ARM (BK) [CA-SS45]
9. SHIFT ROD 40 [SRD-40]
10. BRAKE PEDAL [BPD-15]
11. ROD ADAPTER M6-8 [BRD-ADPTRM6-8]
12. FOOT PEG [PEG] (x2)
13. FOOT PEG END CAP [ST-002] (x2)
14. PEDAL TIP (DELRIN) [ST-001D] (x2)
15. BEARING COLLAR 3 (BK) [PEGBGCLR-3]
16. BEARING COLLAR 15 (BK) [PEGBGCLR-15SB]
17. ROD END COLLAR 3 (GD) [RDED-CLR3]
18. ROD END COLLAR 20 (BK) [RDED-CLR20]
19. ROD END COLLAR 5 (BK) [CLR-5-6]
20. PEG COLLAR 12 [PEGCLR12] (x2)
21. HEX HEAD M5-8mm [HBT-M58]
22. HEX HEAD M6-20mm [HBT-M620]
23. SOCKET HEAD M5x15mm [SBT-M515]
24. SOCKET HEAD M5-35mm [SBT-M535]
25. SOCKET HEAD M6-22mm [SBT-M622]
26. SOCKET HEAD M6-45mm [SBT-M645]
27. SOCKET HEAD M8-15mm [SBT-M815] (x6)
28. BUTTON HEAD M6-10mm [BBT-M610] (x4)
29. BUTTON HEAD M6-20mm [BBT-M620] (x2)
30. BUTTON HEAD M8-30mm [BBT-M830]
31. BUTTON HEAD M8-40mm [BBT-M830]
32. STUD BOLT M8-45mm [STBT-45] (x2)
33. REVERSE STUD M6-45mm [STUD-M6L]
34. NUT M5 [NUT-5] (x2)
35. JAM NUT M6 [JNT-6]
36. REVERSE JAM NUT M6 [JNT-6L] (x2)
37. LOCK NUT M6 [LNT-6]
38. FLANGE NUT M8 [FNT-8] (x2)
39. MALE ROD END M6 [RDED-M6]
40. FEMALE ROD END M6 [RDED-F6]
41. FEMALE REVERSE ROD END M6 [RDED-F6L]
42. PULL SWITCH STAY 16 [PSTAY-16]
43. RETURN SPRING 8-25 [RS-RSP8-25]
44. **SHIFTER SWITCH (Kawasaki Part)**
45. **MASTER CYLINDER (Kawasaki Part)**
46. **PULL SWITCH (Kawasaki Part)**
47. **NUT (Kawasaki Part)**
48. **NUT (Kawasaki Part)**
49. **NUT (Kawasaki Part)**

(Not Pictured)
- SOCKET HEAD M6x15mm [SBT-M615]
- UNIVERSAL STAY [UB-M625-B]
(For relocating reservoir)

[R]

