

ZX-6R '03-'04 REAR SETS

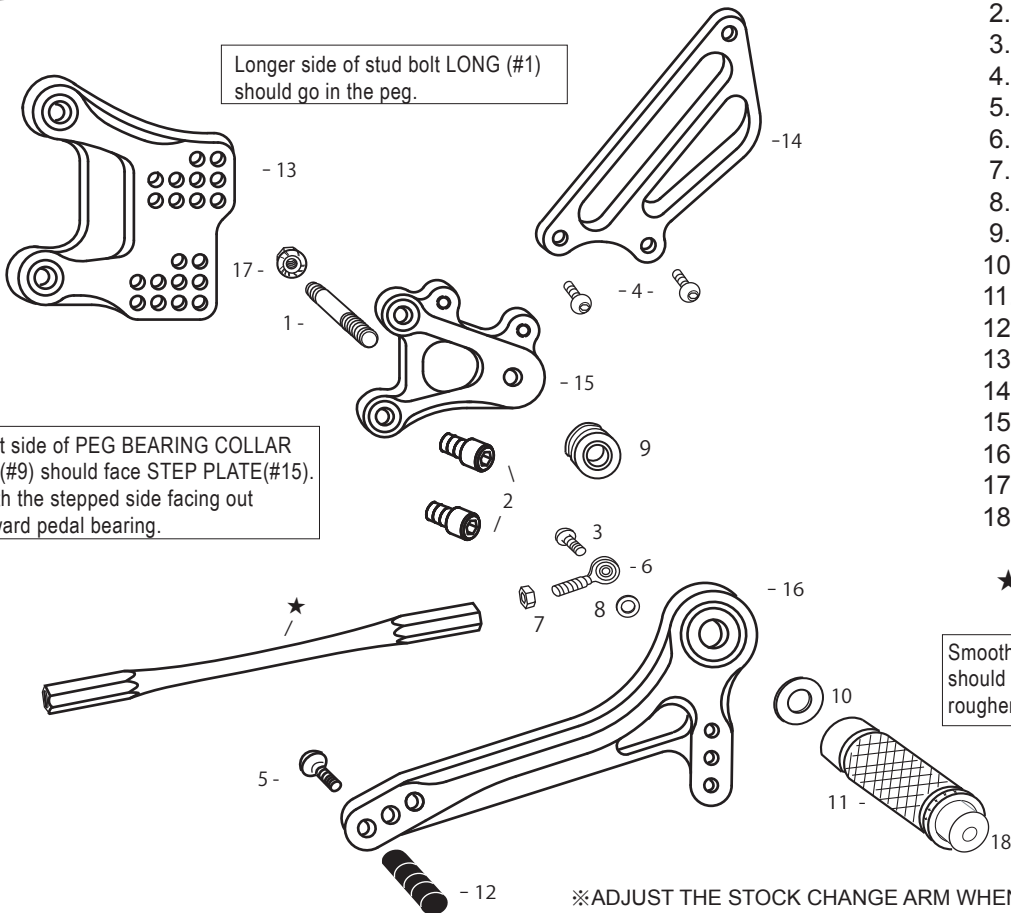
1. STUD BOLT LONG [STBT-L]
2. SOCKET HEAD M8×15mm ×2
3. BUTTON HEAD M6×20mm
4. BUTTON HEAD M6×10mm ×2
5. BUTTON HEAD M6×20mm
6. MALE ROD END M6
7. JAM NUT M6
8. ROD END COLLAR 3
9. PEG BEARING COLLAR 10
10. PEG WASHER M8
11. FOOT PEG
12. PEDAL TIP (DELRIN)
13. BASE PLATE [L]
14. HEEL GUARD [L] [HG-2L]
15. STEP PLATE [L]
16. SHIFT PEDAL 60(SPD1)
17. FLANGE NUT M8
18. FOOT PEG END CAP

★use stock shift rod

Smooth front of peg washer M8 (#10) should face pedal bearing, with the rougher, flat side facing out toward peg.

Longer side of stud bolt LONG (#1) should go in the peg.

Flat side of PEG BEARING COLLAR 10 (#9) should face STEP PLATE(#15). With the stepped side facing out toward pedal bearing.



※ADJUST THE STOCK CHANGE ARM WHEN INSTALLING SATO REAR SETS.

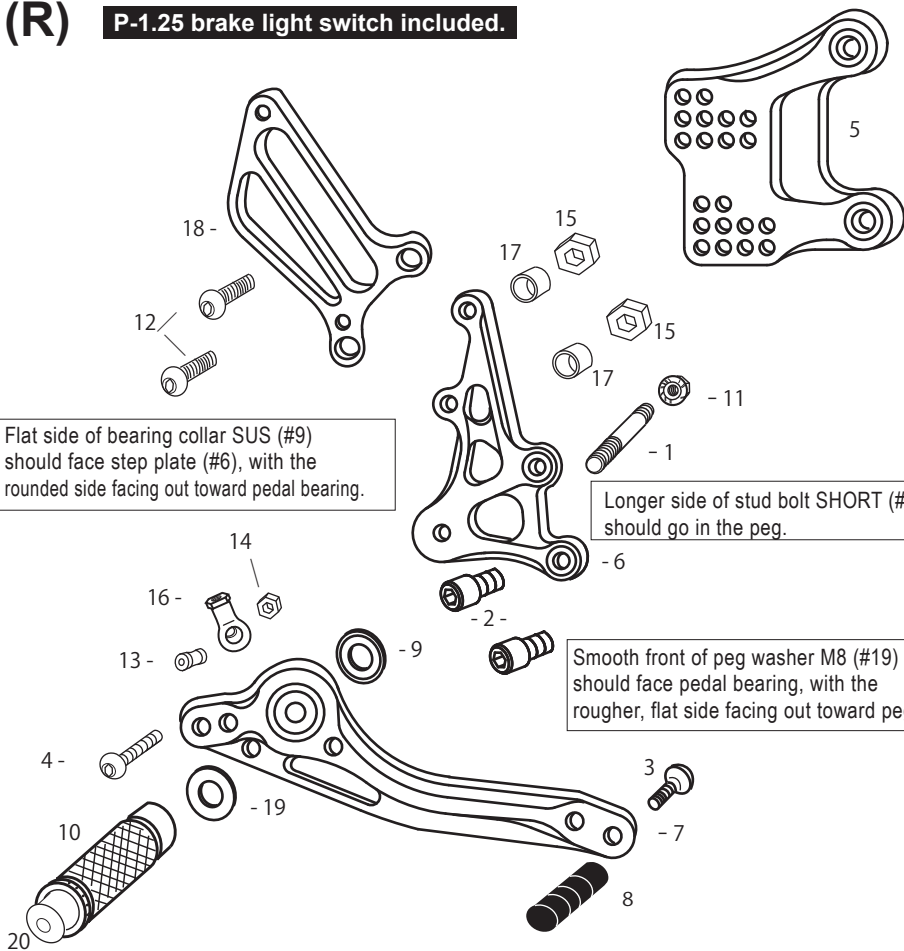
(R) P-1.25 brake light switch included.

1. STUD BOLT SHORT [STBT-S]
2. SOCKET HEAD M8×15mm ×2
3. BUTTON HEAD M6×20mm
4. BUTTON HEAD M6×40mm
5. BASE PLATE [R]
6. STEP PLATE [R]
7. BRAKE PEDAL 150(BPD1)
8. PEDAL TIP (DELRIN)
9. BEARING COLLAR SUS
10. FOOT PEG
11. FLANGE NUT M8
12. BUTTON HEAD M8×35mm ×2
13. BRAKE ROD END COLLAR 19(BK)
14. PLAIN NUT M6
15. PLAIN NUT M8 ×2
16. 6-M8 FEMALE ROD END
17. COLLAR 8 ×2
18. HEEL GUARD [R] [HG-9R]
19. PEG WASHER M8
20. FOOT PEG END CAP

Flat side of bearing collar SUS (#9) should face step plate (#6), with the rounded side facing out toward pedal bearing.

Longer side of stud bolt SHORT (#1) should go in the peg.

Smooth front of peg washer M8 (#19) should face pedal bearing, with the rougher, flat side facing out toward peg.



POSITIONS

1	10mm Forward	0mm
2	10mm Forward	10mm Up
3	0mm	0mm
4	0mm	10mm Up
5	10mm Back	0mm
6	10mm Back	10mm Up
7	10mm Back	20mm Up
8	20mm Back	0mm
9	20mm Back	10mm Up
10	20mm Back	20mm Up

All measurements are in relation to stock position (0 mm)