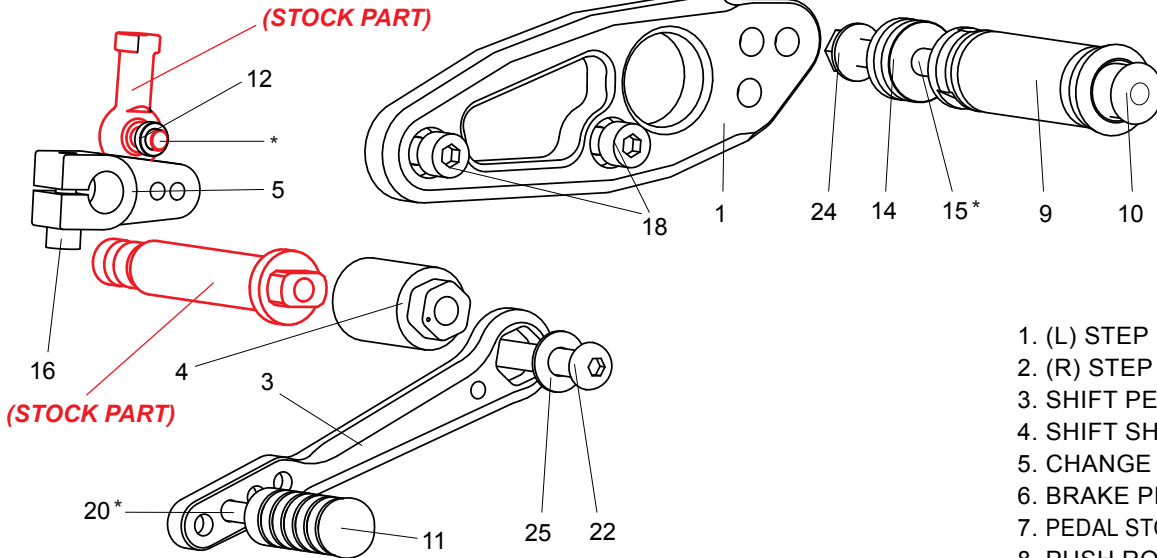
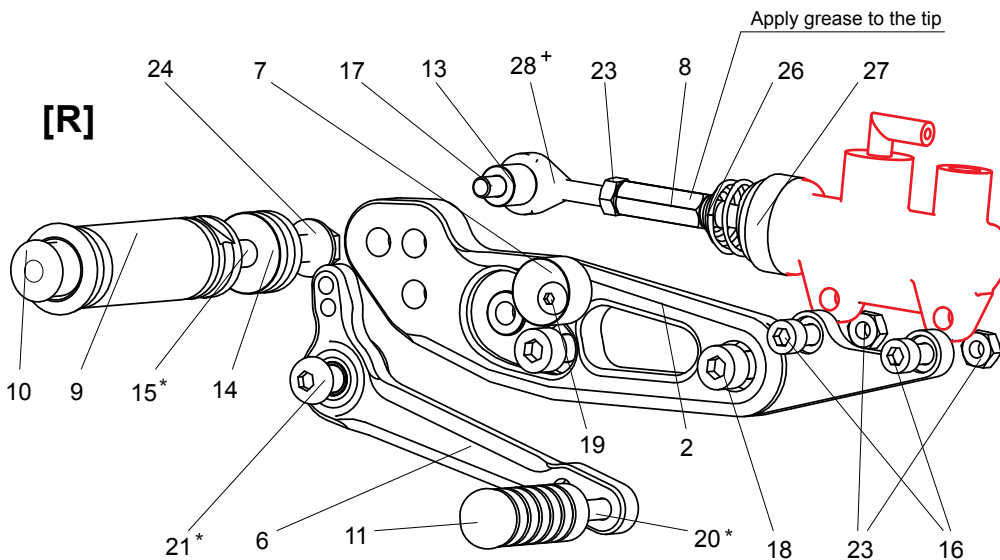


[L]



1. (L) STEP PLATE [MG-V715SP-L]
2. (R) STEP PLATE [MG-V715SP-R]
3. SHIFT PEDAL [SPD-MG1]
4. SHIFT SHAFT(SV) [SS-MGV715]
5. CHANGE ARM SS (BK) [CA-SS]
6. BRAKE PEDAL [BPD-MG2]
7. PEDAL STOPPER (DELRIN) [BPD-STOPPER]
8. PUSH ROD 70 [PRD-70]
9. FOOT PEG [PEG] (x2)
10. FOOT PEG END CAP [ST-002] (x2)
11. PEDAL TIP (DELRIN) [ST-001D] (x2)
12. ROD END COLLAR 3(GD) [RDED-CLR3]
13. BRAKE ROD COLLAR 12(BK) [RDED-CLR12]
14. PEG COLLAR 12 [PEGCLR-12] (x2)
15. STUD BOLT M8 x 50mm [STBT-50] (x2)
16. SOCKET HEAD M6 x 20mm [SBT-M620] (x3)
17. SOCKET HEAD M6 x 30mm [SBT-M630]
18. SOCKET HEAD M8 x 20mm [SBT-M820] (x4)
19. BUTTON HEAD M5 x 20mm [BBT-M520]
20. BUTTON HEAD M6 x 20mm [BBT-M620] (x2)
21. BUTTON HEAD M8 x 25mm [BBT-M825]
22. BUTTON HEAD M8 x 50mm [BBT-M850]
23. NUT M6 [NUT-6] (x3)
24. FLANGE NUT M8 [FNT-8] (x2)
25. WASHER M8 [WS-8]
26. RETURN SPRING 40 [RS-RSP]
27. RETURN SPRING COLLAR [RS-RSCLR]
28. MALE ROD END M6 [RDED-M6]

[R]



\* We recommend applying some threadlocker (Loctite, Vibra Tite or similar) to these bolts during installation. This will help prevent the parts from vibrating their way loose or falling off during use. (Some pre-assembled parts, such as the brake pedal, may have already been Loctited).

+ Lubricate rod ends regularly