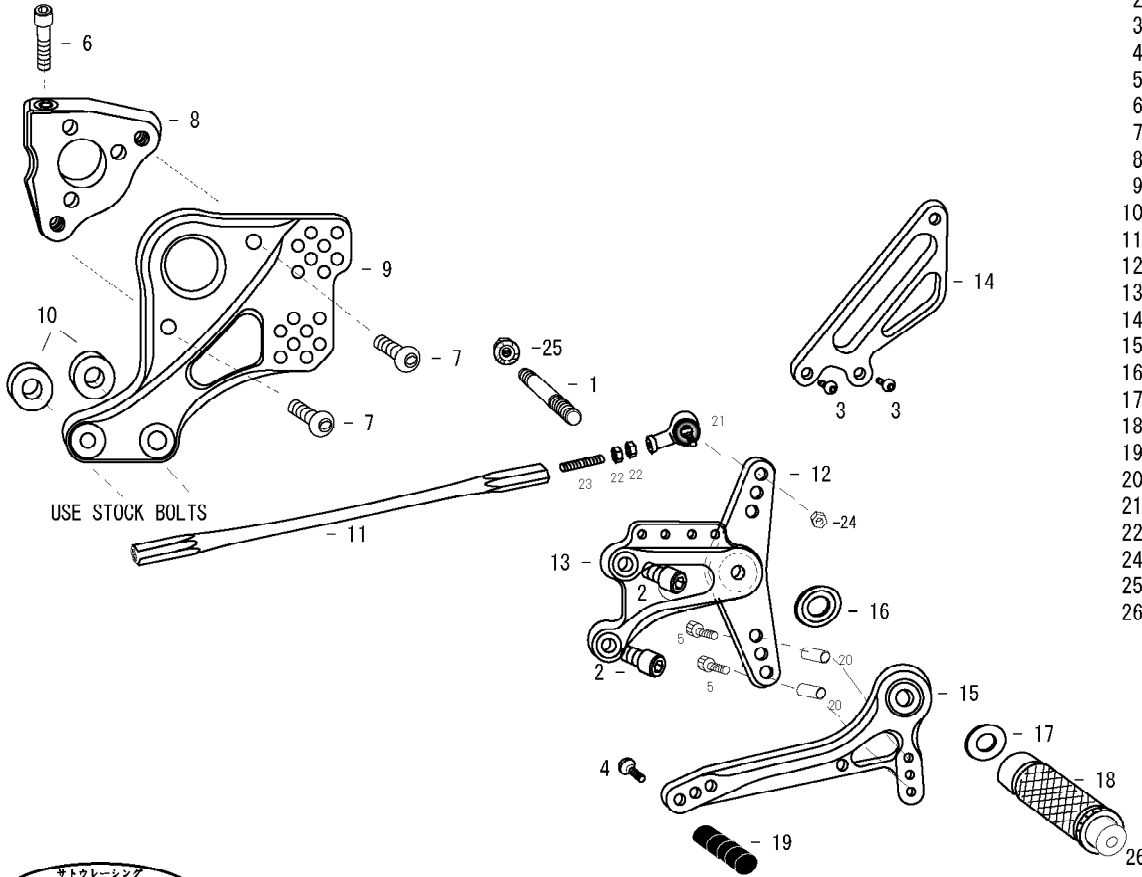


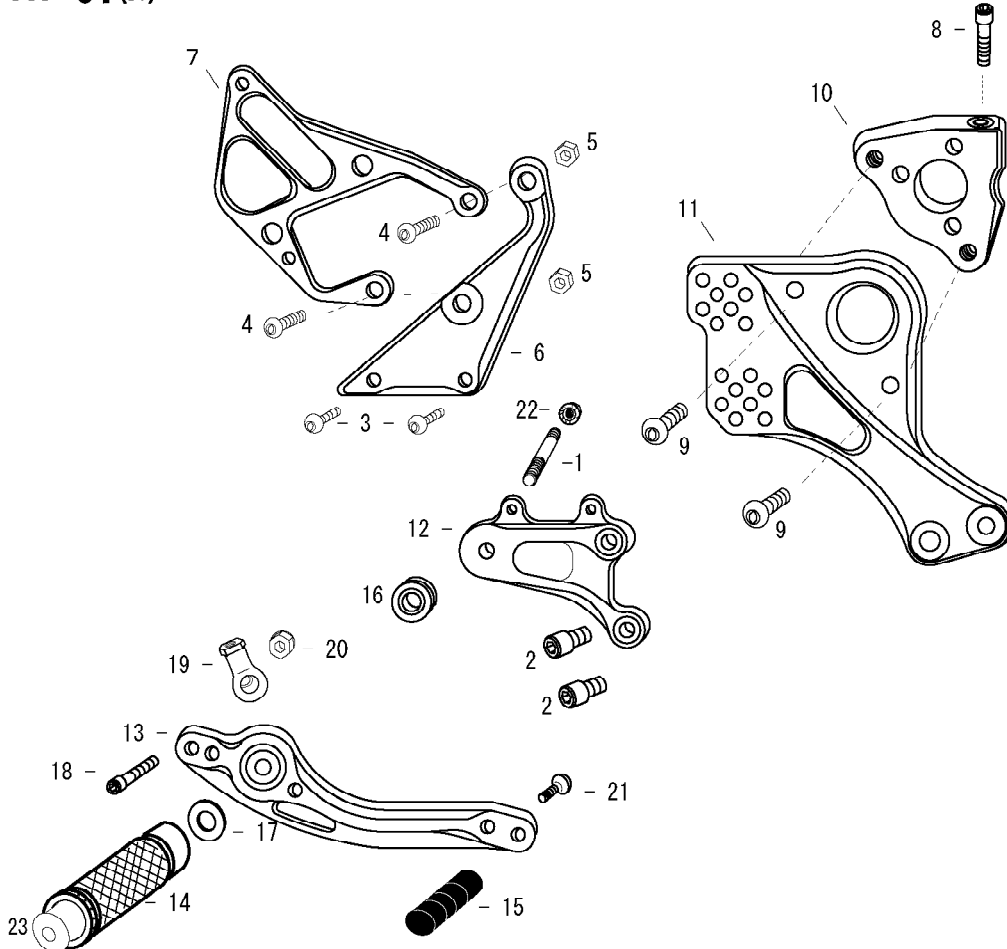
MT-01 (L)



1. STUD BOLT SHORT
2. SOCKET HEAD M8 × 15mm × 2
3. BUTTON HEAD M6 × 10mm × 2
4. BUTTON HEAD M6 × 20mm
5. SOCKET HEAD M6 × 35mm × 2
6. SOCKET HEAD M8 × 35mm
7. BUTTON HEAD M8 × 20mm × 2
8. BASE CLAMP [L] (BK)
9. BASE PLATE [L]
10. BASE PLATE COLLAR 12 (BK) × 2
11. SHIFT ROD 220
12. SHIFT LEVER
13. STEP PLATE [L]
14. HEEL GUARD [L] (HG8)
15. SHIFT PEDAL 70 (SPD2)
16. BEARING COLLAR SUS
17. PEG WASHER M8
18. FOOT PEG
19. PEDAL TIP DELRIN
20. COLLAR 20-6 × 2
21. MT-01 REVERSE ROD END
22. REVERSE JAM NUT M6
24. REVERSE STUD M6
25. FLANGE NUT M8
26. FOOT PEG END CAP



MT-01(R)



POSITIONS		
1	12.5mm Back	27.5mm Up
2	12.5mm Back	42.5mm Up
3	20mm Back	35mm Up
4	20mm Back	50mm Up
5	27.5mm Back	27.5mm Up
6	27.5mm Back	42.5mm Up
7	35mm Back	35mm Up
8	35mm Back	50mm Up

All measurements are in relation to stock position (0 mm)

1. STUD BOLT LONG
2. SOCKET HEAD M8 × 15mm × 2
3. BUTTON HEAD M6 × 10mm × 2
4. BUTTON HEAD M8 × 35mm × 2
5. PLAIN NUT M8 × 2
6. MASTER STAY
7. HEEL GUARD [R]
8. SOCKET HEAD M8 × 35mm
9. BUTTON HEAD M8 × 20mm × 2
10. BASE CLAMP [R] (BK)
11. BASE PLATE [R]
12. STEP PLATE [R]
13. BRAKE PEDAL 180 (BPD2)
14. FOOT PEG
15. PEDAL TIP DELRIN
16. FOOT PEG BEARING COLLAR10
17. PEG WASHER M8
18. SOCKET HEAD M6 × 25mm
19. 6-M8 FEMALE ROD END
20. LOCK NUT M6
21. BUTTON HEAD M6 × 25mm
22. FLANGE NUT M8
23. FOOT PEG END CAP