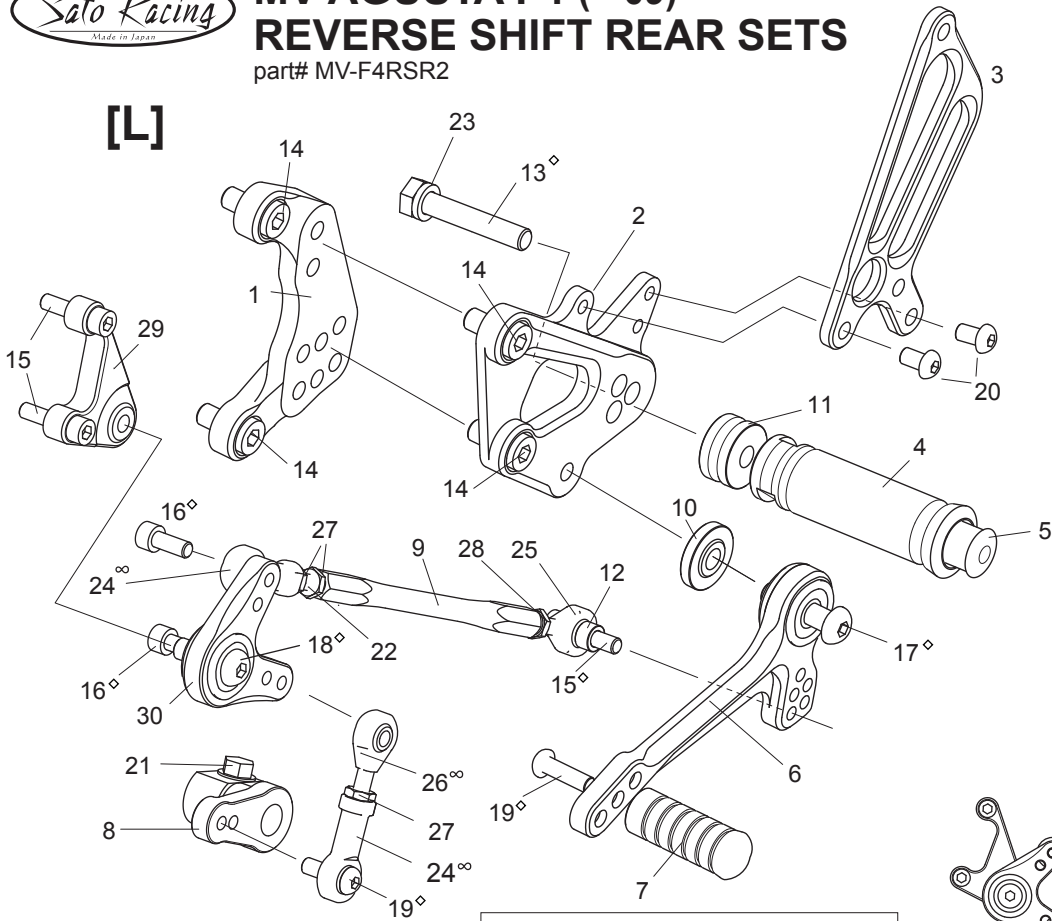


# MV AGUSTA F4 ( '09) REVERSE SHIFT REAR SETS

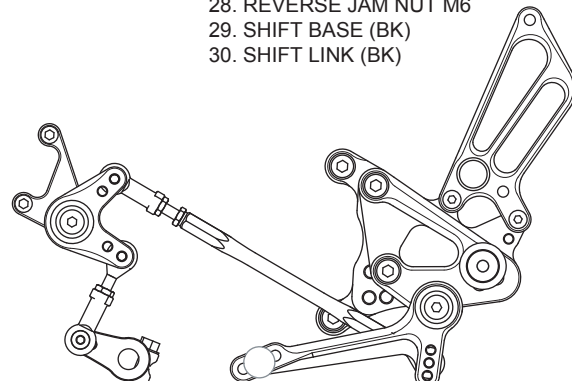
part# MV-F4RSR2

[L]



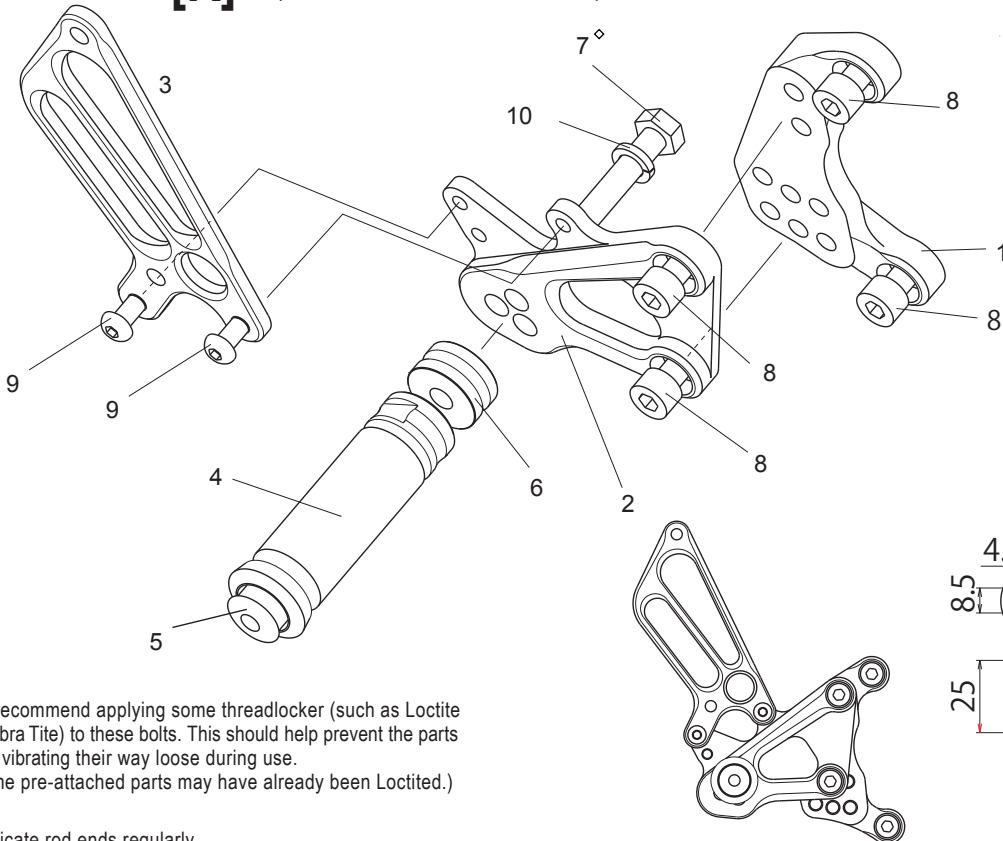
Flat side of BEARING COLLAR 5 (#10) should face STEP PLATE (#2), with the stepped side facing out toward pedal bearing.

1. BASE PLATE [L]
2. STEP PLATE [L]
3. HEEL GUARD [L] [HG-6L]
4. FOOT PEG
5. FOOT PEG END CAP
6. SHIFT PEDAL [SPD0912]
7. PEDAL TIP [DELRIN] [ST-001D]
8. CHANGE ARM (CA3,BK)
9. SHIFT ROD 140
10. BEARING COLLAR 5
11. FOOT PEG COLLAR 12
12. ROD END COLLAR 6
13. HEX HEAD M8×45mm
14. SOCKET HEAD M8×15mm ×4
15. SOCKET HEAD M6×25mm ×3
16. SOCKET HEAD M6×15mm ×2
17. BUTTON HEAD M8×30mm
18. BUTTON HEAD M8×25mm
19. BUTTON HEAD M6×20mm ×2
20. BUTTON HEAD M6×10mm ×2
21. FLANGE HEAD M6×20mm
22. STUD BOLT M6×45
23. SPLIT WASHER M8
24. FEMALE ROD END M6 ×2
25. MALE REVERSE ROD END M6
26. MALE ROD END M6
27. JAM NUT M6 ×3
28. REVERSE JAM NUT M6
29. SHIFT BASE (BK)
30. SHIFT LINK (BK)

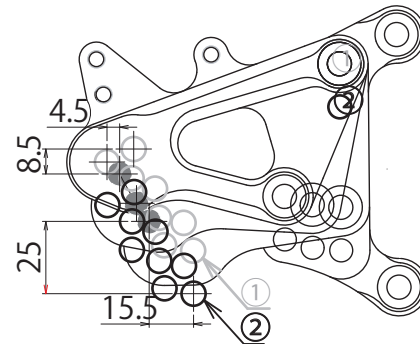


[R]

(USE STOCK BRAKE PEDAL)



1. BASE PLATE [R]
2. STEP PLATE [R]
3. HEEL GUARD [R] [HG-6R]
4. FOOT PEG
5. FOOT PEG END CAP
6. FOOT PEG COLLAR 12
7. HEX HEAD M8×45mm
8. SOCKET HEAD M8×15mm ×4
9. BUTTON HEAD M6×10mm ×2
10. SPLIT WASHER M8



● STOCK POSITION

◇ We recommend applying some threadlocker (such as Loctite or Vibra Tite) to these bolts. This should help prevent the parts from vibrating their way loose during use.  
(Some pre-attached parts may have already been Loctited.)

∞ Lubricate rod ends regularly