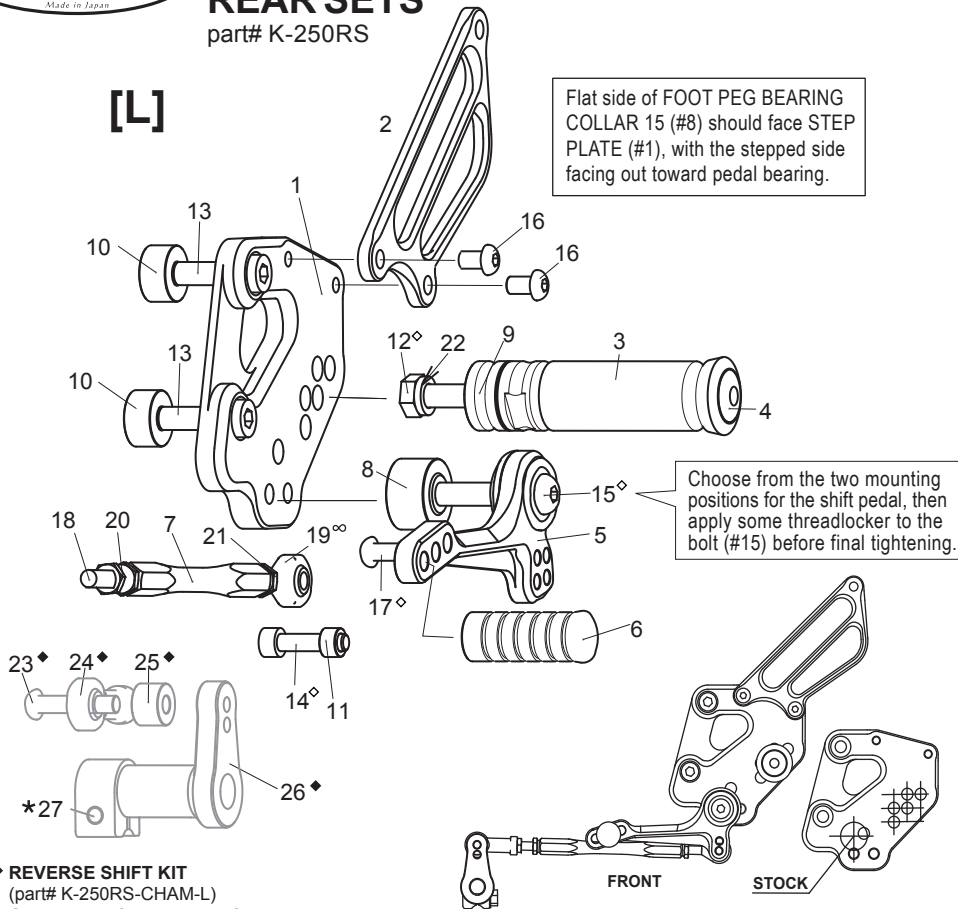


Kawasaki Ninja 250R ('08-'12)

REAR SETS

part# K-250RS

[L]



◆ **REVERSE SHIFT KIT**
(part# K-250RS-CHAM-L)
Optional part for reverse shift pattern

[L] SIDE

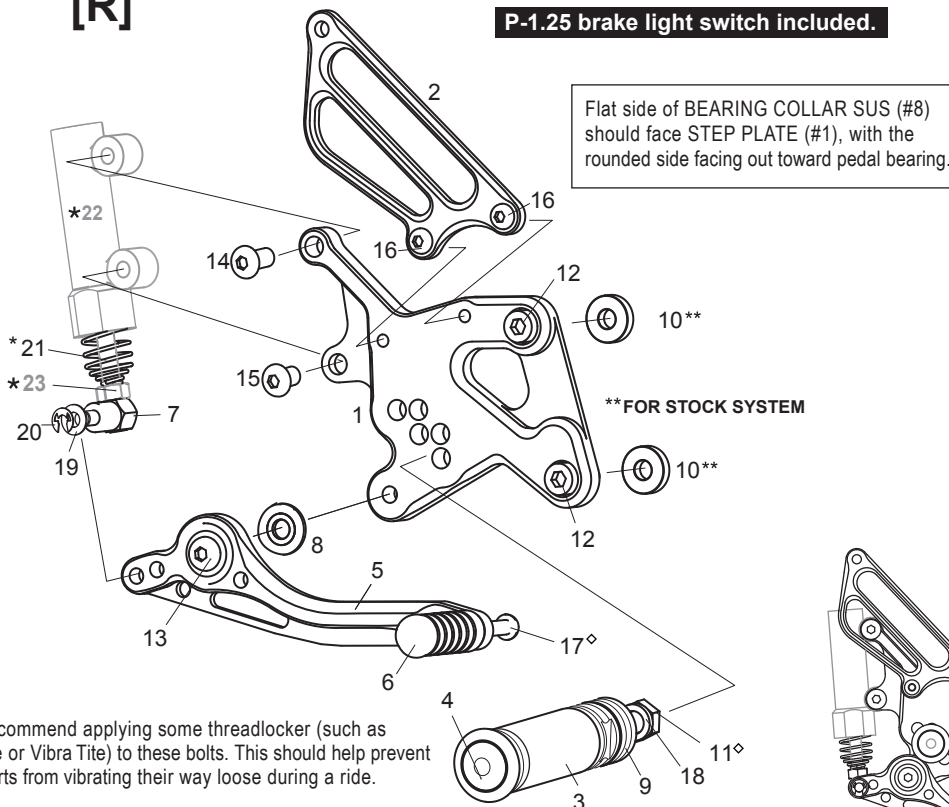
1. STEP PLATE [L]
2. HEEL GUARD [L](HG2)
3. FOOT PEG
4. FOOT PEG END CAP
5. SHIFT PEDAL SS75(SPD10)
6. PEDAL TIP DELRIN
7. SHIFT ROD 110
8. FOOT PEG BEARING COLLAR 15
9. FOOT PEG COLLAR 12
10. BASE PLATE COLLAR 10(BK) ×2
11. ROD END COLLAR 6
12. HEX BOLT M8×45mm
13. SOCKET HEAD M8×25mm ×2
14. SOCKET HEAD M6×25mm
15. BUTTON HEAD M8×40mm
16. BUTTON HEAD M6×10mm ×2
17. BUTTON HEAD M6×20mm
18. REVERSE STUD M6×45mm
19. MALE ROD END M6
20. REVERSE JAM NUT M6 ×2
21. JAM NUT M6
22. SPLIT WASHER M8
- ◆ 23. BUTTON HEAD M6×30mm (OPTION)
- ◆ 24. FEMALE REVERSE ROD END M6 (OPTION)
- ◆ 25. COLLAR 10 (OPTION)
- ◆ 26. CHANGE ARM L (OPTION)
- ★ 27. FLANGE HEAD M6×20mm (STOCK)

POSITIONS		
1	30mm Back	10mm Up
2	30mm Back	20mm Up
3	40mm Back	20mm Up
4	40mm Back	30mm Up
5	50mm Back	30mm Up

All measurements are in relation to stock position (0 mm)

[R]

P-1.25 brake light switch included.



◇ We recommend applying some threadlocker (such as Loctite or Vibra Tite) to these bolts. This should help prevent the parts from vibrating their way loose during a ride.

∞ Lubricate rod ends regularly

Due to running improvements in the designs of Sato parts, some new replacement parts may look somewhat different than the original parts with the same part #. These slight differences are mostly cosmetic and have no effect on performance.

[R] SIDE

1. STEP PLATE [R]
2. HEEL GUARD [R] [HG-2R]
3. FOOT PEG
4. FOOT PEG END CAP
5. BRAKE PEDAL 150 [BPD1]
6. PEDAL TIP [DELRIN]
7. BRAKE ROD M40
8. BEARING COLLAR SUS
9. FOOT PEG COLLAR 12
10. BASE PLATE COLLAR 5(BK) ×2
11. HEX BOLT M8×45mm
12. SOCKET HEAD M8×20mm ×2
13. BUTTON HEAD M8×25mm
14. BUTTON HEAD M8×20mm
15. BUTTON HEAD M8×15mm
16. BUTTON HEAD M6×10mm ×2
17. BUTTON HEAD M6×20mm
18. SPLIT WASHER M8
19. WASHER M6
20. E CLIP
- * 21. RETURN SPRING L40 (OPTION)
- ★ 22. MASTER CYLINDER (STOCK)
- ★ 23. NUT M8 (STOCK)

FRONT

BACK