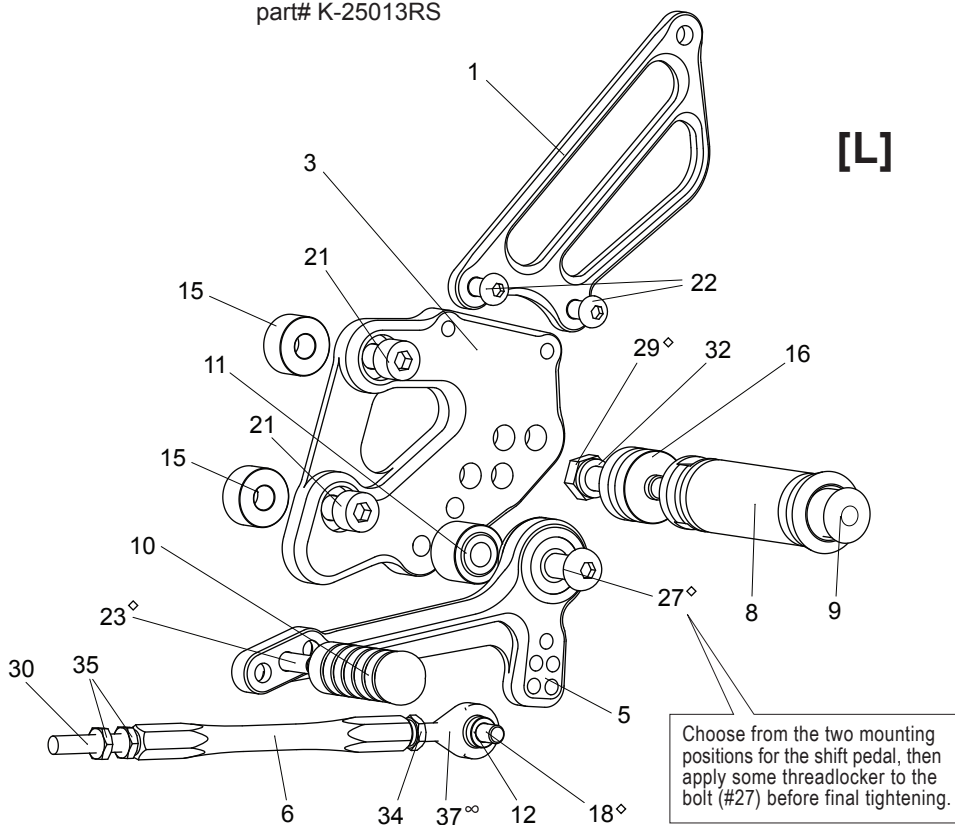
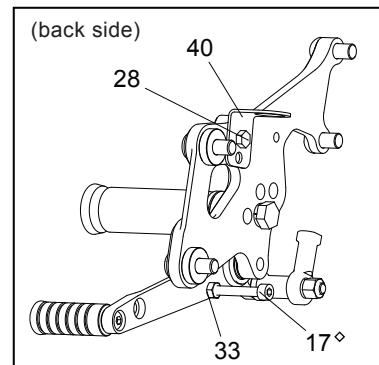


# KAWASAKI Ninja 300/ 250 / Z250 ('13-) REAR SETS

part# K-25013RS



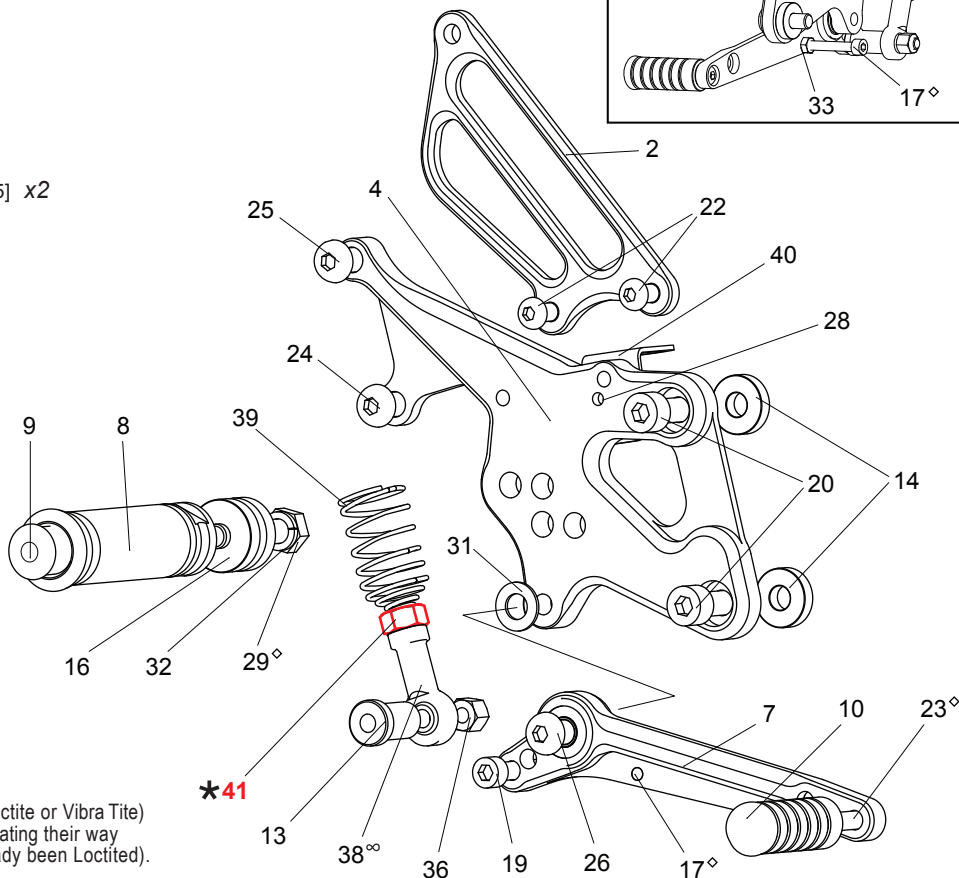
- 1. (L) HEEL GUARD [HG-2L]
- 3. (L) STEP PLATE [K-25013SP-L]
- 5. SHIFT PEDAL [SPD-0912]
- 6. SHIFT ROD 110 [SRD-110]
- 8. FOOT PEG [PEG]
- 9. FOOT PEG END CAP [ST-002]
- 10. PEDAL TIP (DELRIN) [ST-001D]
- 11. BEARING COLLAR 15-8(BK) [BGCLR-15-8]
- 12. ROD END COLLAR 3(GD) [RDED-CLR3]
- 15. BASE PLATE COLLAR 10(BK) [BPCLR-10] x2
- 16. FOOT PEG COLLAR 15 [PEGCLR-15]
- 18. SOCKET HEAD M6-20mm [SBT-M620]
- 21. SOCKET HEAD M8-25mm [SBT-M825] x2
- 22. BUTTON HEAD M6-10mm [BBT-M610] x2
- 23. BUTTON HEAD M6-20mm [BBT-M620]
- 27. BUTTON HEAD M8-40mm [BBT-M840]
- 29. HEX HEAD M8-40mm [HBT-M840]
- 30. REVERSE STUD M6-45mm [STUD-M6L]
- 32. SPLIT WASHER M8 [SWS-8]
- 34. JAM NUT M6 [JNT-6]
- 35. REVERSE JAM NUT M6 [JNT-6L] x2
- 37. MALE ROD END M6 [RDED-M6]



## [R] (Use stock brake light switch)

- 2. (R) HEEL GUARD [HG-2R]
- 4. (R) STEP PLATE [K-25013SP-R]
- 7. BRAKE PEDAL [DMBP-135b]
- 8. FOOT PEG [PEG]
- 9. FOOT PEG END CAP [ST-002]
- 10. PEDAL TIP [DELRIN] [ST-001D]
- 13. COLLAR 23-6(BK) [CLR-23-6]
- 14. BASE PLATE COLLAR 5(BK) [BPCLR-5] x2
- 16. FOOT PEG COLLAR 15 [PEGCLR-15]
- 17. SOCKET HEAD M5-35mm [SBT-M535]
- 19. SOCKET HEAD M6-50mm [SBT-M650]
- 20. SOCKET HEAD M8-20mm [SBT-M820] x2
- 22. BUTTON HEAD M6-10mm [BBT-M610] x2
- 23. BUTTON HEAD M6-20mm [BBT-M620]
- 24. BUTTON HEAD M8-16mm [BBT-M816]
- 25. BUTTON HEAD M8-20mm [BBT-M820]
- 26. BUTTON HEAD M8-25mm [BBT-M825]
- 28. HEX HEAD M5-8mm [HBT-M58]
- 29. HEX HEAD M8-40mm [HBT-M840]
- 31. PEG WASHER M8 [PWS-8]
- 32. SPLIT WASHER M8 [SWS-8]
- 33. NUT M5 [NUT-5]
- 36. LOCK NUT M6 [LNT-6]
- 38. FEMALE ROD END 6-M8 [RDED-F6-8]
- 39. RETURN SPRING 40 [RS-RSP]
- 40. PULL SWITCH STAY 16 [PSTAY-16]

### \* 41. NUT (KAWASAKI PART)



◇ We recommend applying some threadlocker (such as Loctite or Vibra Tite) to these bolts. This should help prevent the parts from vibrating their way loose during a ride. (Some pre-installed parts have already been Loctited).

∞ Lubricate rod ends regularly