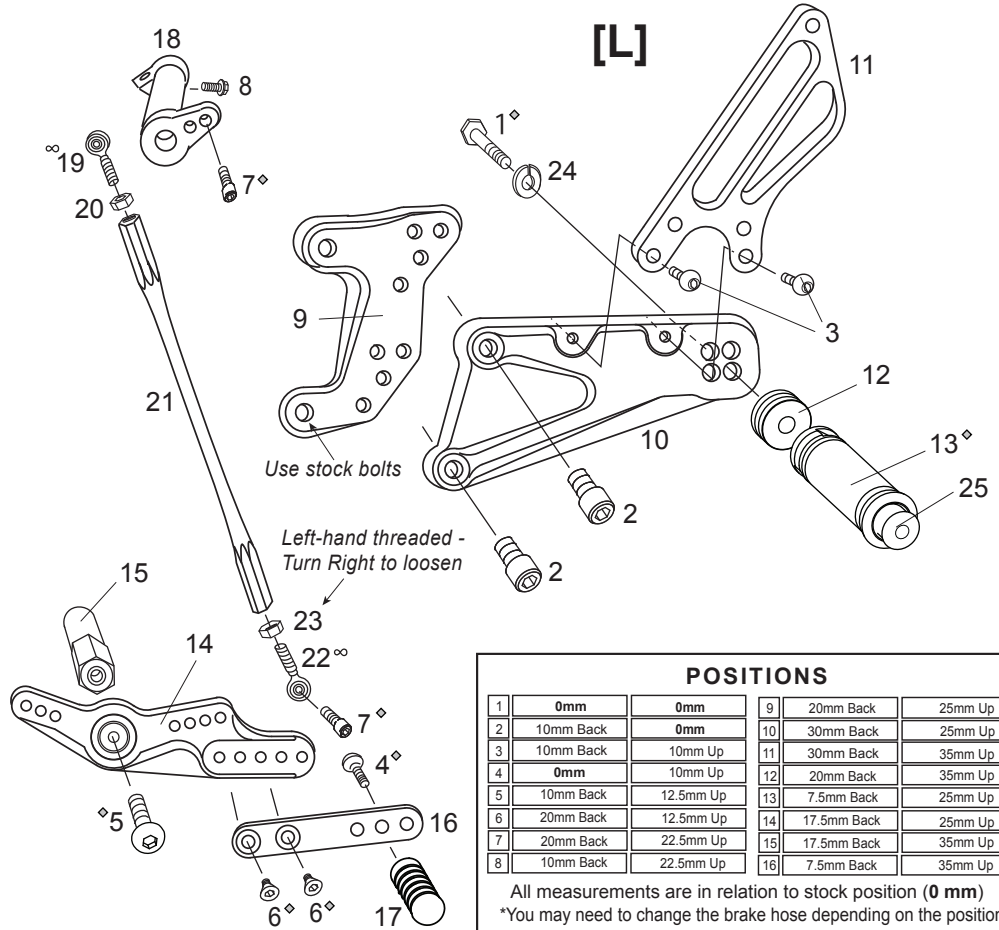


## [L]-SIDE

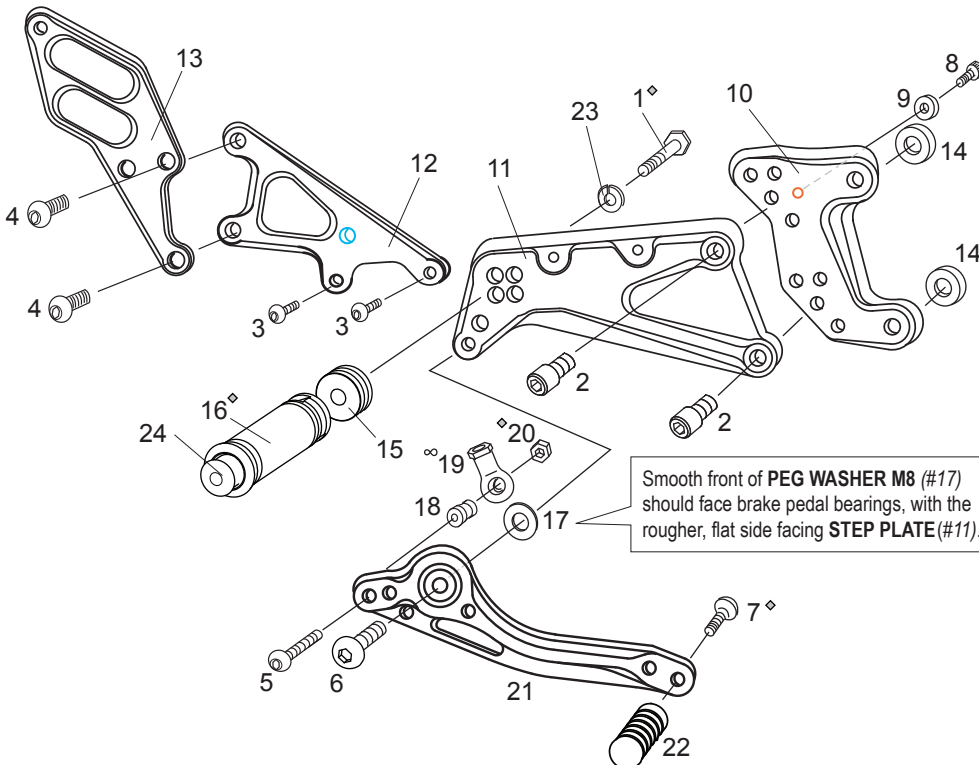
1. HEX HEAD M8×45mm [HBT-M845]
2. SOCKET HEAD M8×15mm [SBT-M815] ×2
3. BUTTON HEAD M6×10mm [BBT-M610] ×2
4. BUTTON HEAD M6×25mm [BBT-M625]
5. BUTTON HEAD M8×30mm [BBT-M830]
6. FLAT HEAD M6×10mm [FBT-M610] ×2
7. SOCKET HEAD M6×20mm [SBT-M620] ×2
8. FLANGE HEAD M6×20mm [FGBT-M620]
9. (L) BASE PLATE [Y-R107BP-L]
10. (L) STEP PLATE [Y-R107SP-L]
11. (L) HEEL GUARD [HG-14L]
12. FOOT PEG COLLAR 12 [PEGCLR-12]
13. FOOT PEG [PEG]
14. SHIFT PEDAL SPD11(BK) [SPD-11]
15. SHIFT BASE 65 [SB-65SUS]
16. SHIFT PEDAL SPD8(BK) [SPD-8]
17. PEDAL TIP (DELRIN) [ST-001D18]
18. CHANGE ARM(BK) [CA-1]
19. MALE ROD END M6 [RDED-M6]
20. JAM NUT M6 [JNT-6]
21. SHIFT ROD 190(BK) [SRD-190B]
22. MALE REVERSE ROD END M6 [RDED-M6L]
23. REVERSE JAM NUT M6 [JNT-6L]
24. SPLIT WASHER M8 [SWS-8]
25. FOOT PEG END CAP [ST-002]



POSITIONS					
1	0mm	0mm	9	20mm Back	25mm Up
2	10mm Back	0mm	10	30mm Back	25mm Up
3	10mm Back	10mm Up	11	30mm Back	35mm Up
4	0mm	10mm Up	12	20mm Back	35mm Up
5	10mm Back	12.5mm Up	13	7.5mm Back	25mm Up
6	20mm Back	12.5mm Up	14	17.5mm Back	25mm Up
7	20mm Back	22.5mm Up	15	17.5mm Back	35mm Up
8	10mm Back	22.5mm Up	16	7.5mm Back	35mm Up

All measurements are in relation to stock position (0 mm)  
\*You may need to change the brake hose depending on the positions  
( [ ] ~ [ ] ) after adjusting drive chain.

## [R]



## [R]-SIDE

1. HEX HEAD M8×45mm [HBT-M845]
2. SOCKET HEAD M8×15mm [SBT-M815] ×2
3. BUTTON HEAD M6×10mm [BBT-M610] ×2
4. BUTTON HEAD M8×20mm [BBT-M820] ×2
5. BUTTON HEAD M6×40mm [BBT-M640]
6. BUTTON HEAD M8×25mm [BBT-M825]
7. BUTTON HEAD M6×20mm [BBT-M620]
8. SOCKET HEAD M6×15mm [SBT-M615]
9. COLLAR 5(BK) [HGCLR-5] ×1
10. (R) BASE PLATE [Y-R107SP-R]
11. (R) STEP PLATE [Y-R107SP-R]
12. MASTER STAY [Y-R107MS]
13. (R) HEEL GUARD [HG-15R]
14. BASE PLATE COLLAR 5(BK) [BPCLR-5] ×2
15. FOOT PEG COLLAR 12 [PEGCLR-12]
16. FOOT PEG [PEG]
17. PEG WASHER M8 [PWS-8]
18. BRAKE ROD COLLAR 15(BK) [RDED-CLR15]
19. FEMALE ROD END 6-M8 [RDED-F6-8]
20. PLAIN NUT M6 [NUT-6]
21. BRAKE PEDAL 150 [BPD-1]
22. PEDAL TIP (DELRIN) [ST-001D18]
23. SPLIT WASHER M8 [SWS-8]
24. FOOT PEG END CAP [ST-002]

Not Pictured:  
Brake Light Switch P-1.25 [BSW-125]

◇ Apply threadlocker (such as Loctite or Vibra Tite) to these bolts before final tightening.  
(Factory pre-tightened parts such as the brake pedal have already been Loctited.)

∞ Clean and lubricate rod end ball joints periodically.