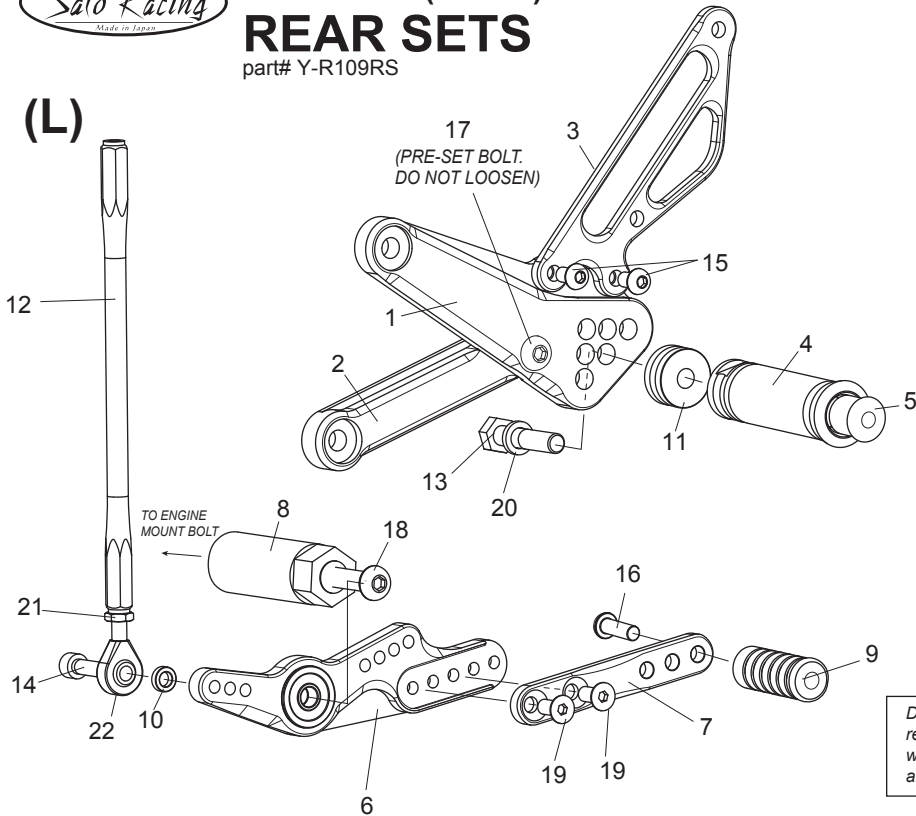


# YZF-R1 ('09-'14) REAR SETS

part# Y-R109RS

(L)



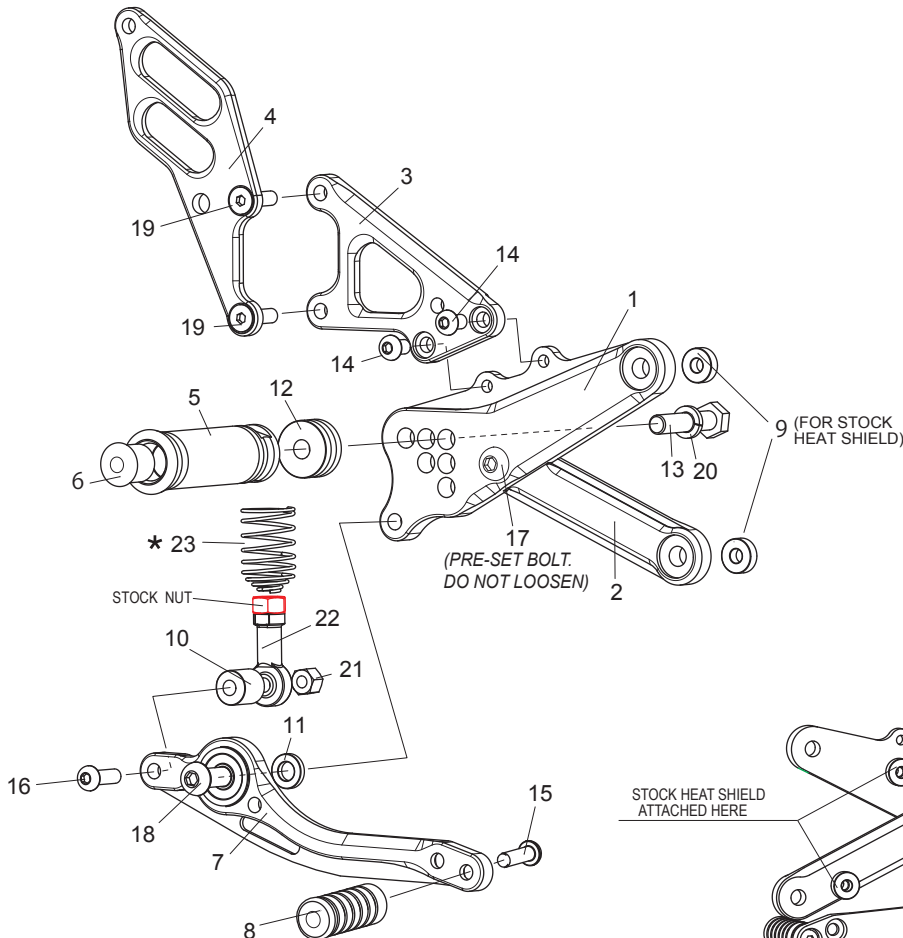
## [L] SIDE

- ☆ 1. (L) STEP PLATE [Y-R109SP-L]
- ☆ 2. (L) STEP BRACKET [Y-R109BT-L]
- 3. (L) HEEL GUARD [HG-17L]
- 4. FOOT PEG [PEG]
- 5. FOOT PEG END CAP [ST-002]
- 6. SHIFT PEDAL SPD11(BK) [SPD-11]
- 7. SHIFT PEDAL SPD8(BK) [SPD-8]
- 8. SHIFT BASE R109 [SB-R109]
- 9. PEDAL TIP (DELRIN) [ST-001D]
- 10. ROD END COLLAR 3(GD) [RDED-CLR3]
- 11. FOOT PEG COLLAR 12 [PEGCLR-12]
- 12. SHIFT ROD 190 (BK) [SRD-190B]
- 13. HEX BOLT M8×40mm [HBT-M840]
- 14. SOCKET HEAD M6×20mm [SBT-M620]
- 15. BUTTON HEAD M6×10mm [BBT-M610] ×2
- 16. BUTTON HEAD M6×25mm [BBT-M625]
- 17. BUTTON HEAD M8×20mm [BBT-M820]
- 18. BUTTON HEAD M8×30mm [BBT-M830]
- 19. FLAT HEAD M6×10mm [FBT-M610] ×2
- 20. SPLIT WASHER M8 [SWS-8]
- 21. REVERSE JAM NUT M6 [JNT-6L]
- 22. MALE REVERSE ROD END M6 [RDED-M6L]

Due to running improvements in the designs of Sato parts, some new replacement parts may look somewhat different than the original parts with the same part #. These slight differences are mostly cosmetic and have no effect on performance.

(R)

P-1.25 brake light switch included.



## [R] SIDE

- ☆ 1. (R) STEP PLATE [Y-R109SP-R]
- ☆ 2. (R) STEP BRACKET [Y-R109BT-R]
- 3. MASTER STAY [Y-R109MS]
- 4. (R) HEEL GUARD [HG-16R]
- 5. FOOT PEG [PEG]
- 6. FOOT PEG END CAP [ST-002]
- 7. BRAKE PEDAL 165 [BPD-3]
- 8. PEDAL TIP (DELRIN) [ST-001D]
- 9. HEAT GUARD COLLAR 5(BK) [HGCLR-5] ×2
- 10. ROD END COLLAR 15(BK) [RDEDCLR-15]
- 11. BRAKE PEDAL COLLAR 3(BK) [CLR3-8]
- 12. FOOT PEG COLLAR 12 [PEGCLR-12]
- 13. HEX BOLT M8×40mm [HBT-M840]
- 14. BUTTON HEAD M6×10mm [BBT-M610] ×2
- 15. BUTTON HEAD M6×20mm [BBT-M620]
- 16. BUTTON HEAD M6×40mm [BBT-M640]
- 17. BUTTON HEAD M8×15mm [BBT-M815]
- 18. BUTTON HEAD M8×30mm [BBT-M830]
- 19. FLAT HEAD M6×25mm [FBT-M625] ×2
- 20. SPLIT WASHER M8 [SWS-8]
- 21. LOCK NUT M6 [LNT-6]
- 22. FEMALE ROD END 6-M8 [RDED-F6-8]
- ★23. RETURN SPRING 40 (option) [RS-RSP]

### POSITIONS

①	Forward 10mm	Down 10mm
②	Forward 10mm	0mm
③	Forward 10mm	10mm UP
④	0mm	0mm
⑤	0mm	10mm UP
⑥	10mm BACK	10mm UP

All measurements are in relation to the stock peg position (0 mm)