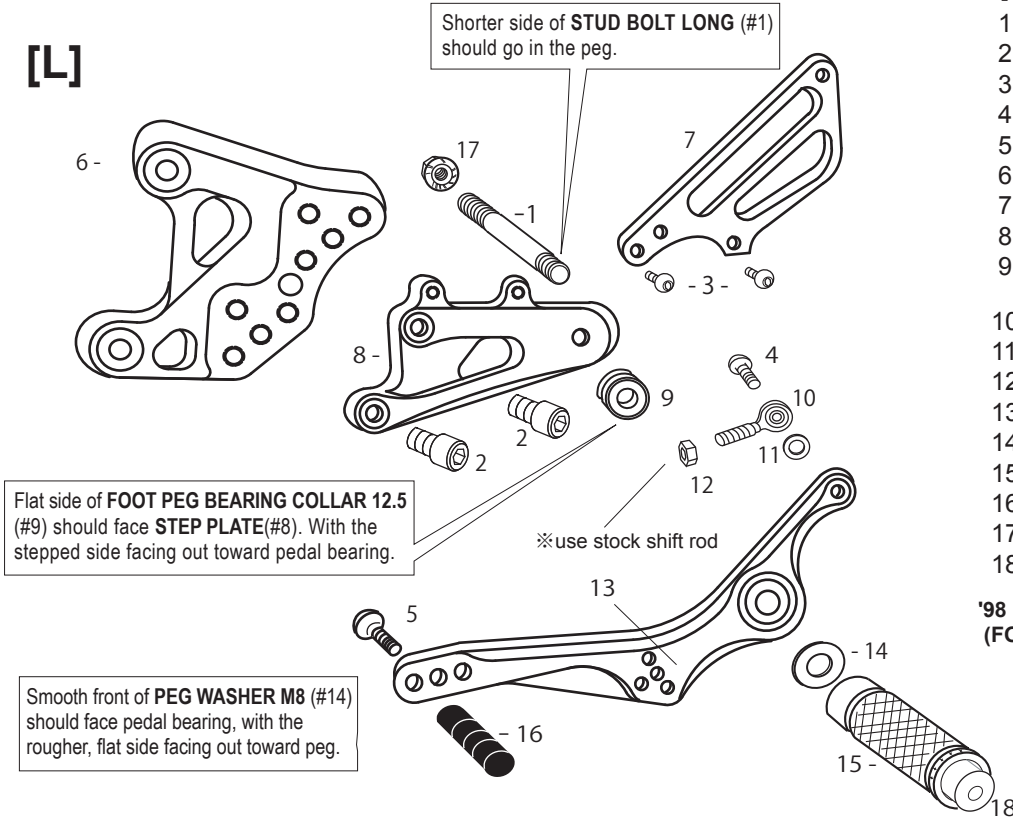


[L]



[L]-SIDE

1. STUD BOLT LONG (M8x65) [STBT-L]
2. SOCKET HEAD M8x15mm [SBT-M815] x2
3. BUTTON HEAD M6x10mm [BBT-M610] x2
4. BUTTON HEAD M6x20mm [BBT-M620]
5. BUTTON HEAD M6x20mm [BBT-M620]
6. (L) BASE PLATE
7. (L) HEEL GUARD [HG-4L]
8. (L) STEP PLATE
9. FOOT PEG BEARING COLLAR 12.5 [PEGBGCLR-125]
10. MALE REVERSE ROD END M6 [RDED-M6L]
11. ROD END COLLAR 3(GD) [RDED-CLR3]
12. REVERSE JAM NUT M6 [JNT-6L]
13. SHIFT PEDAL [SPD3]
14. PEG WASHER M8 [PWS-8]
15. FOOT PEG [PEG]
16. PEDAL TIP (DELRIN) [ST-001D]
17. FLANGE NUT M8 [FNT-8]
18. FOOT PEG END CAP [ST-002]

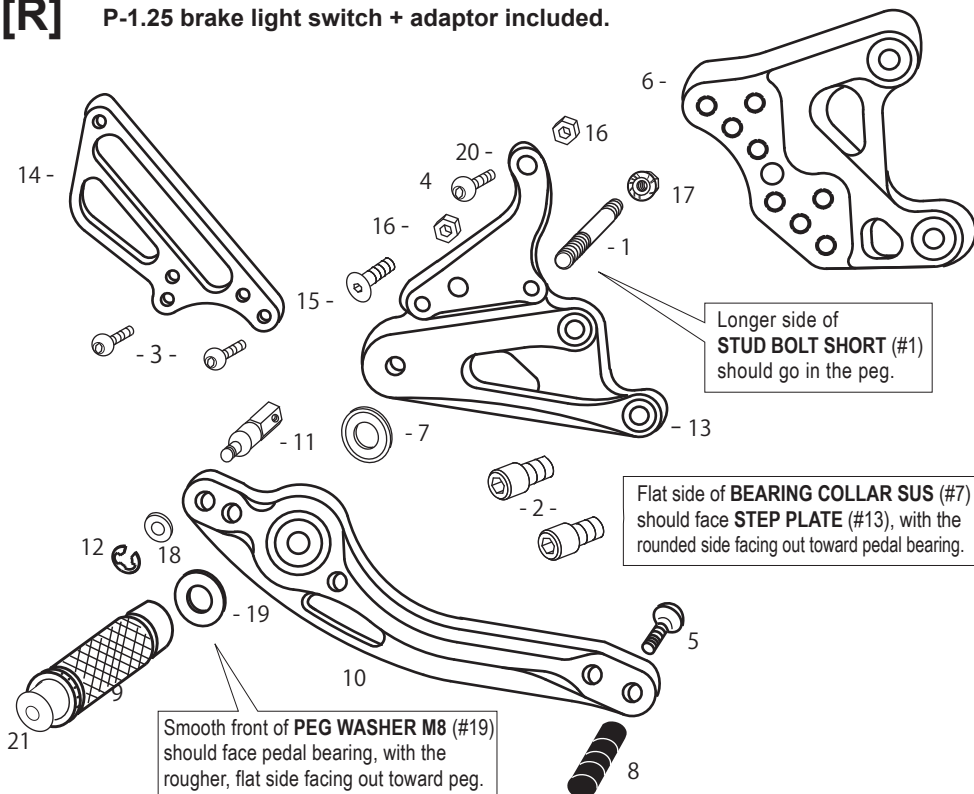
'98 MODEL REQUIRES THE FOLLOWING PARTS (FOR STOCK CHANGE ARM)

- COLLAR 30mm x 1
SOCKET HEAD M6x45mm x 1

※optional SATO SHIFT ROD is available separately (part# SRD-270).
Adjust the stock change arm when installing SATO rear sets.

[R]

P-1.25 brake light switch + adaptor included.



[R]-SIDE

1. STUD BOLT SHORT (M8x55) [STBT-S]
2. SOCKET HEAD M8x15mm [SBT-M815] x2
3. BUTTON HEAD M6x15mm [BBT-M615] x2
4. BUTTON HEAD M8x30mm [BBT-M830]
5. BUTTON HEAD M6x20mm [BBT-M620]
6. (R) BASE PLATE
7. BEARING COLLAR SUS [BGCLR-SUS]
8. PEDAL TIP (DELRIN) [ST-001D]
9. FOOT PEG [PEG]
10. BRAKE PEDAL 180 [BPD-2]
11. BRAKE ROD S35 [BRD-S35]
12. E CLIP M6 [ECP-6]
13. (R) STEP PLATE
14. (R) HEEL GUARD [HG-5R]
15. FLAT HEAD M8x30mm [FBT-M830]
16. PLAIN NUT M8 [NUT-8] x2
17. FLANGE NUT M8 [FNT-8]
18. PLAIN WASHER M6 [WS-6]
19. PEG WASHER M8 [PWS-8]
20. MASTER STAY
21. FOOT PEG END CAP [ST-002]