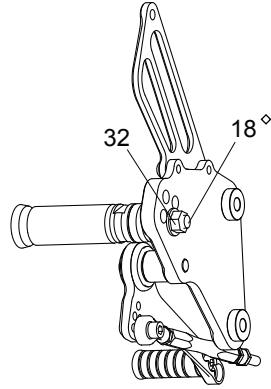
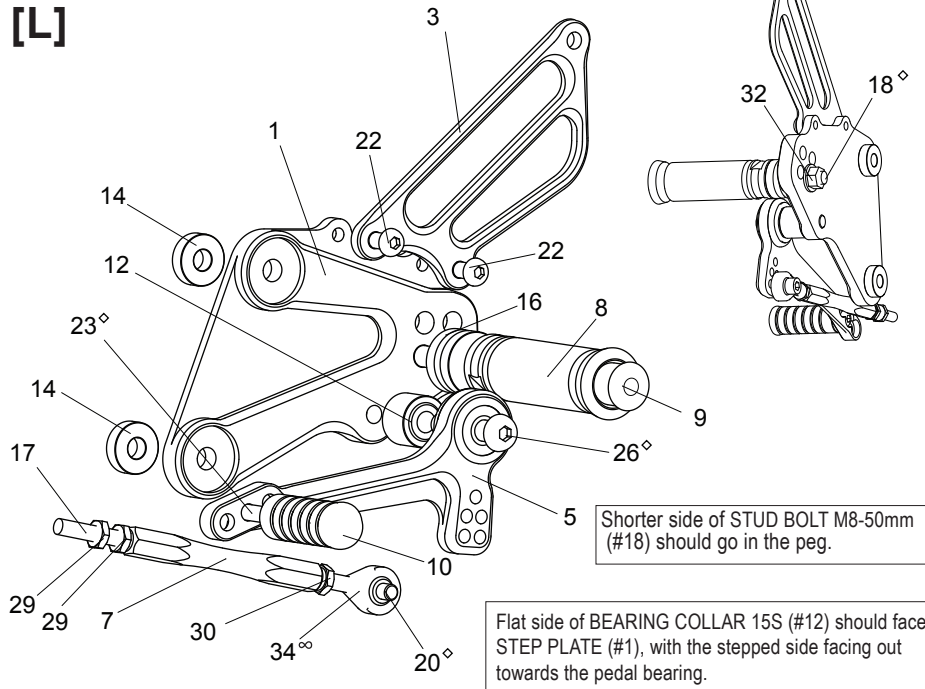


# SUZUKI GSX-S750 ('15-'16) / GSR750 ('11-'16)

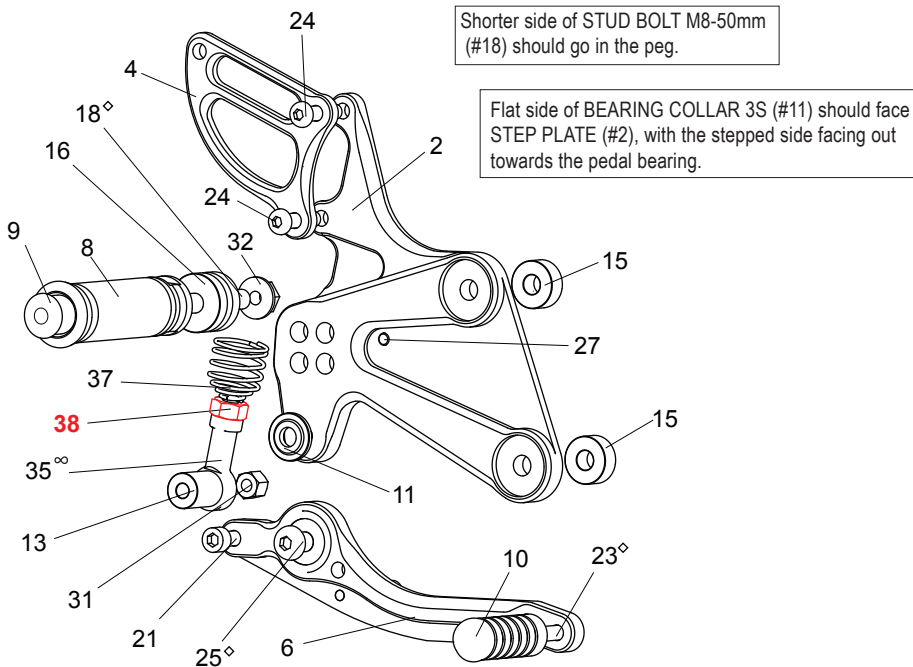
## REAR SETS (part #S-GSR750RS)

[L]



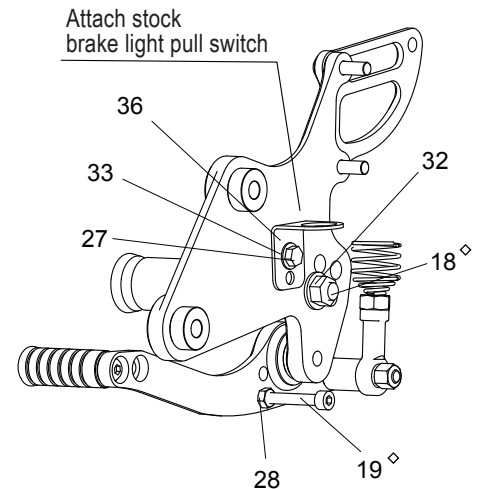
[R]

(Use with stock brake light switch)



1. (L) STEP PLATE [S-GSR750SP-L]
2. (R) STEP PLATE [S-GSR750SP-R]
3. (L) HEEL GUARD [HG-2L]
4. (R) HEEL GUARD [HG-11R]
5. SHIFT PEDAL SCP65-75 [SPD-0912]
6. BRAKE PEDAL 165 [BPD-3b]
7. SHIFT ROD 90 [SRD-90]
8. FOOT PEG [PEG] x2
9. FOOT PEG END CAP [ST-002] x2
10. PEDAL TIP (DELRIN) [ST-001D] x2
11. BEARING COLLAR 3S(BK) [BGCLR-3S]
12. BEARING COLLAR 15S(BK) [BGCLR-15S]
13. ROD END COLLAR 19(BK) [RDEDCLR-19]
14. BASE PLATE COLLAR 6(BK) [BPCLR-6] x2
15. BASE PLATE COLLAR 8(BK) [BPCLR-8] x2
16. FOOT PEG COLLAR 15 [PEGCLR-15] x2
17. STUD M6-45mm [STUD-M6]
18. STUD BOLT M8-50mm [STBT-50] x2
19. SOCKET HEAD M5-35mm [SBT-M535]
20. SOCKET HEAD M6-15mm [SBT-M615]
21. SOCKET HEAD M6-45mm [SBT-M645]
22. BUTTON HEAD M6-10mm [BBT-M610] x2
23. BUTTON HEAD M6-20mm [BBT-M620] x2
24. BUTTON HEAD M6-25mm [BBT-M625] x2
25. BUTTON HEAD M8-25mm [BBT-M825]
26. BUTTON HEAD M8-40mm [BBT-M840]
27. HEX HEAD M5-8mm [HBT-M58]
28. NUT M5 [NUT-5]
29. JAM NUT M6 [JNT-6] x2
30. REVERSE JAM NUT M6 [JNT-6L]
31. LOCK NUT M6 [LNT-6]
32. FLANGE NUT M8 [FNT-8] x2
33. WASHER M5 [WS-5]
34. MALE REVERSE ROD END M6 [RDED-M6L]
35. FEMALE ROD END 6-M8 [RDED-F6-8]
36. PULL SWITCH STAY 16 [PSTAY-16]
37. RETURN SPRING 40 [RS-RSP]
- 38. NUT (SUZUKI PART)**

(BACK SIDE)



Due to running improvements in the designs of Sato parts, some new replacement parts may look somewhat different than the original parts with the same part #. These slight differences are mostly cosmetic and have no effect on performance.

◇ We recommend applying some threadlocker (such as Loctite or Vibra Tite) to these bolts. This should help prevent the parts from vibrating their way loose during use. (Some pre-assembled parts have already been Loctited).

◇ Lubricate Rod Ends regularly