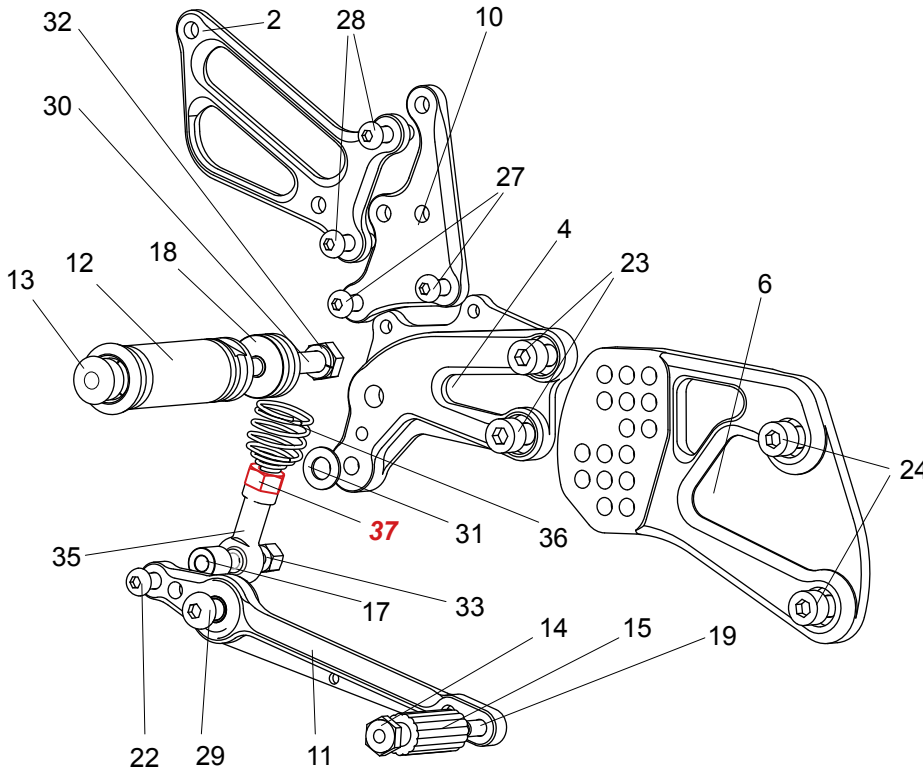


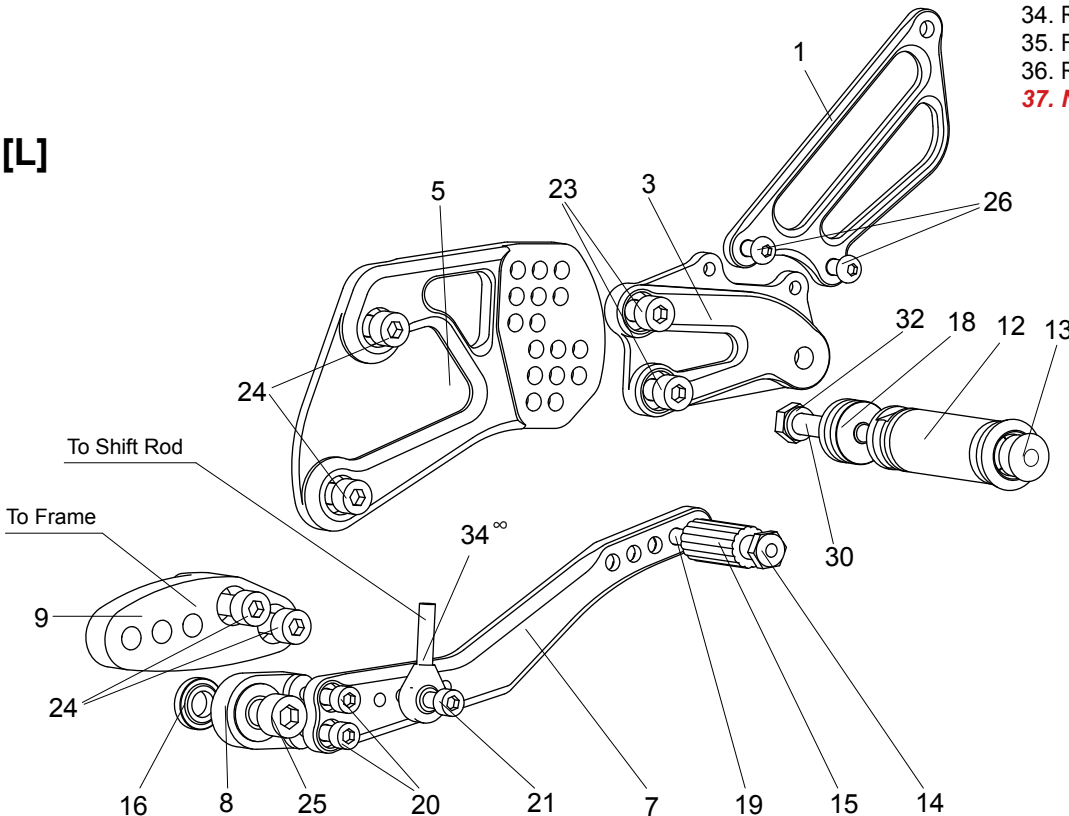
Race Concept-series Rear Sets are pure, no compromise racing rear sets designed for dedicated track-only bikes, and are not intended for use on the street.

[R]



1. (L) HEEL GUARD [HG-2L]
2. (R) HEEL GUARD [HG-1R]
3. (L) STEP PLATE
4. (R) STEP PLATE
5. (L) BASE PLATE (BK)
6. (R) BASE PLATE (BK)
7. SHIFT PEDAL (BK)
8. SHIFT BASE (OUTER) (BK)
9. SHIFT BASE (INNER) (BK)
10. MASTER BASE
11. BRAKE PEDAL
12. FOOT PEG [PEG] x 2
13. FOOT PEG END CAP [ST-002] x 2
14. PEDAL TIP (GD) [ST-001RG] x 2
15. RUBBER SLEEVE [ST-001R-SL] x 2
16. BEARING COLLAR 5-10 (BK)
17. ROD END COLLAR 12 (BK) [RDED-CLR12]
18. PEG COLLAR 12(GD) [PEGCLR-12G] x 2
19. LOW SOCKET HEAD M6x15mm x 2
20. SOCKET HEAD M6x15mm x 2
21. SOCKET HEAD M6x18mm
22. BUTTON HEAD M6x35mm
23. SOCKET HEAD M8x15mm x 4
24. SOCKET HEAD M8x20mm x 6
25. SOCKET HEAD M10x30mm (P-1.25)
26. BUTTON HEAD M6x10mm x 2
27. BUTTON HEAD M6x12mm x 2
28. BUTTON HEAD M6x25mm x 2
29. BUTTON HEAD M8x25mm
30. HEX HEAD M8x45mm [HBT-M845] x 2
31. PEG WASHER M8 [PWS-8]
32. SPLIT WASHER M8 [SWS-8] x 2
33. LOCK NUT M6 [LNT-6]
34. REVERSE MALE ROD END M6 [RDED-M6L]
35. FEMALE ROD END 6-M8 [RDED-F6-8]
36. RETURN SPRING 40 [RS-RSP]
- 37. NUT (SUZUKI PARTS)**

[L]



POSITIONS		
1	30mm Back	40mm Up
2	30mm Back	50mm Up
3	30mm Back	60mm Up
4	40mm Back	40mm Up
5	40mm Back	50mm Up
6	40mm Back	60mm Up
7	50mm Back	50mm Up
8	50mm Back	60mm Up

All measurements are in relation to stock foot peg position (0 mm).