

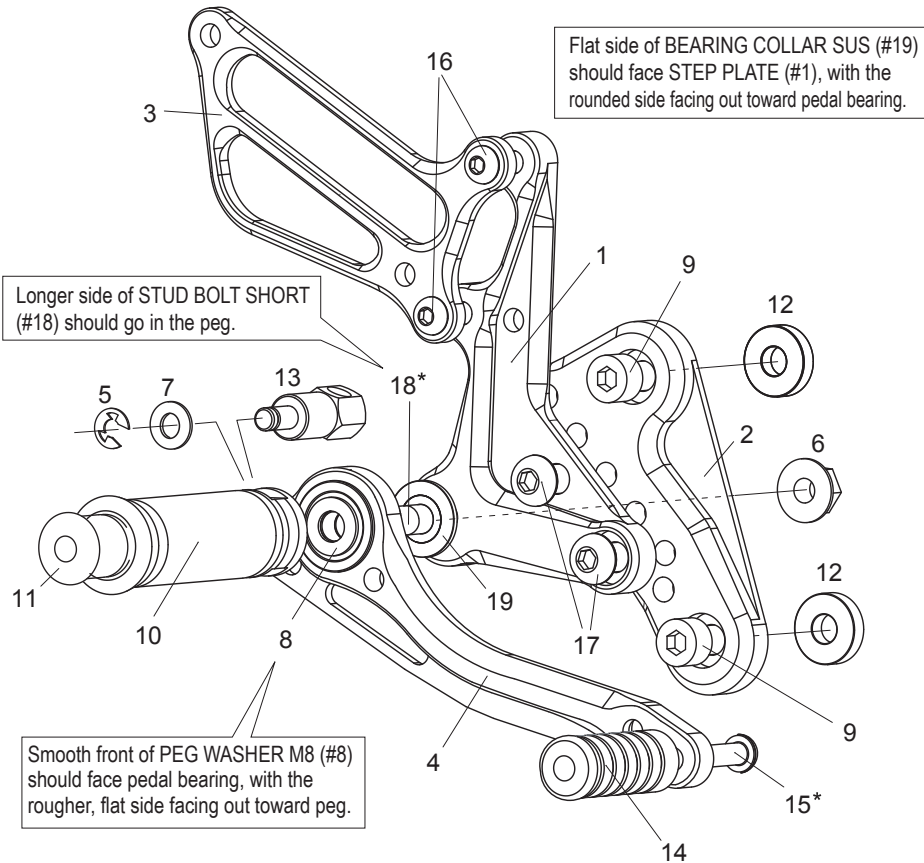
[L]-SIDE

1. STUD BOLT LONG (M8x65) [STBT-L]
2. STEP PLATE [L]
3. MALE REVERSE ROD END M6
4. BASE PLATE [L]
5. SHIFT PEDAL [SPD5]
6. HEEL GUARD [L] [HG8L]
7. PEDAL TIP (DELTRIN) [ST-001D]
8. STUD M6x45
9. FLANGE NUT M8
10. PEG WASHER M8
11. REVERSE JAM NUT M6
12. JAM NUT M6 x2
13. SOCKET HEAD M8x25mm x2
14. SHIFT ROD 140
15. FOOT PEG BEARING COLLAR 10
16. FOOT PEG
17. FOOT PEG END CAP
18. BASE PLATE COLLAR 5 (BK)x2
19. BUTTON HEAD M8x15mm x2
20. BUTTON HEAD M6x10mm x2
21. BUTTON HEAD M6x15mm
22. BUTTON HEAD M6x20mm

\* Apply some threadlocker (Loctite, Vibratite or similar) to these bolts. This will help keep the rear sets parts from vibrating loose during use. (Some pre-assembled parts have already been Loctited)

+ Lubricate rod end regularly

[R] P-1.0 brake light switch included.



[R]-SIDE

1. STEP PLATE [R]
2. BASE PLATE [R]
3. HEEL GUARD [R] [HG1R]
4. BRAKE PEDAL 150 [BPD1]
5. E CLIP M6
6. FLANGE NUT M8
7. PLAIN WASHER M6
8. PEG WASHER M8
9. SOCKET HEAD M8x25mm x2
10. FOOT PEG
11. FOOT PEG END CAP
12. BASE PLATE COLLAR 5 (BK)x2
13. BRAKE ROD M40
14. PEDAL TIP (DELTRIN) [ST-001D]
15. BUTTON HEAD M6x20mm
16. BUTTON HEAD M6x25mm x2
17. BUTTON HEAD M8x15mm x2
18. STUD BOLT SHORT (M8x55) [STBT-S]
19. BEARING COLLAR SUS

