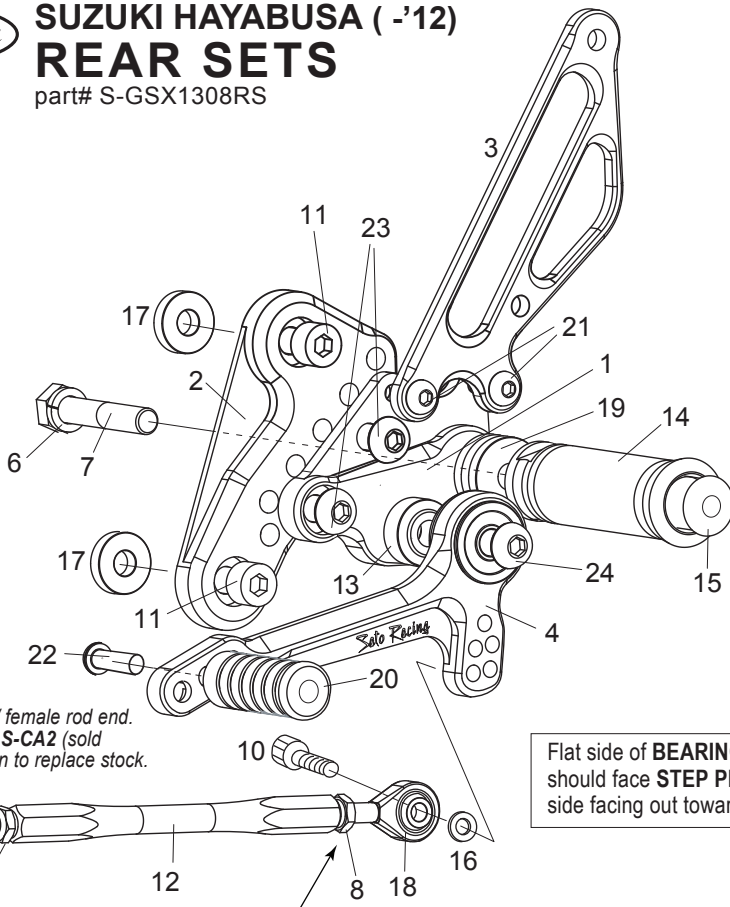


# SUZUKI HAYABUSA ( '12) REAR SETS

part# S-GSX1308RS

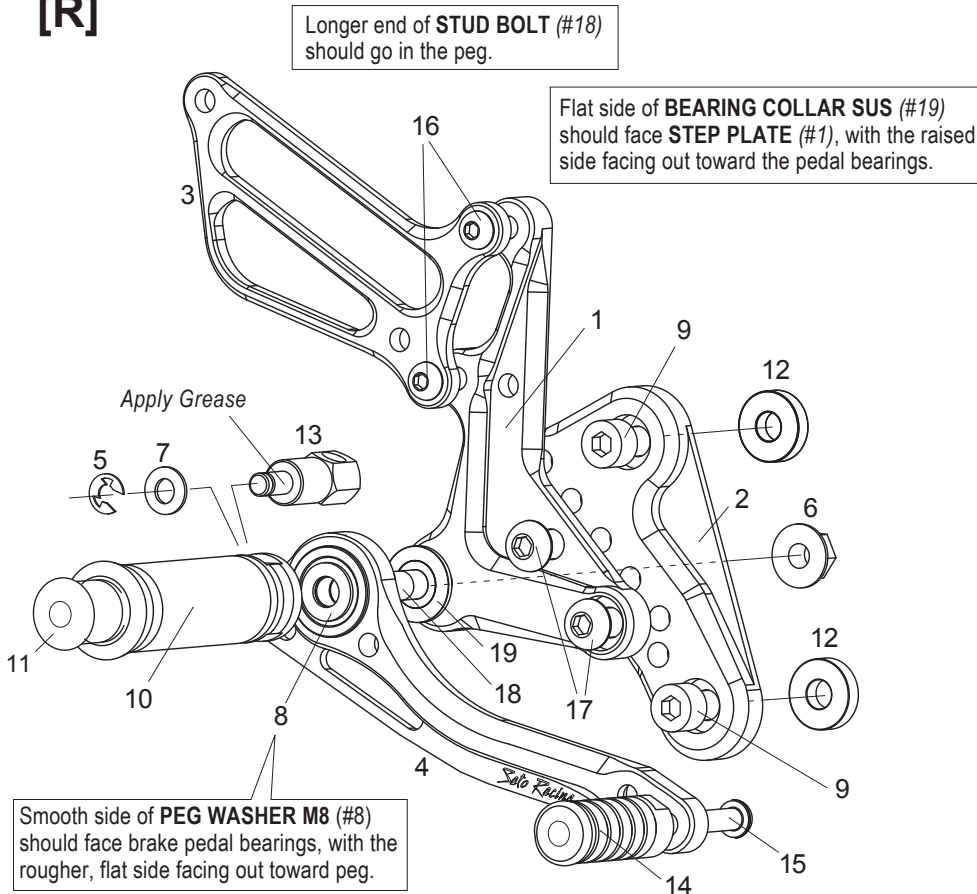
[L]



[L]-SIDE

1. (L) STEP PLATE [S-GSX1308SP-L]
2. (L) BASE PLATE [S-GSX1308BP-L]
3. (L) HEEL GUARD [HG-8L]
4. SHIFT PEDAL [SPD-0912]
5. STUD M6 [STUD-M6]
6. SPLIT WASHER M8 [SWS-8]
7. HEX HEAD M8×45mm [HBT-M845]
8. REVERSE JAM NUT M6 [JNT-6L]
9. JAM NUT M6 [JNT-6] ×2
10. SOCKET HEAD M6×20mm [SBT-M620]
11. SOCKET HEAD M8×25mm [SBT-M825] ×2
12. SHIFT ROD 120 [SRD-120]
13. BEARING COLLAR 10S [PEGBGLR-10SB]
14. FOOT PEG [PEG]
15. FOOT PEG END CAP [ST-002]
16. ROD END COLLAR 3(GD) [RED-CLR3]
17. BASE PLATE COLLAR 5(BK) [BPCLR-5] ×2
18. MALE REVERSE ROD END M6 [RDED-M6]
19. FOOT PEG COLLAR 12 [PEGCLR-12]
20. PEDAL TIP (DELRIN) [ST-001D18]
21. BUTTON HEAD M6×10mm [BBT-M610] ×2
22. BUTTON HEAD M6×20mm [BBT-M620]
23. BUTTON HEAD M8×15mm [BBT-M815] ×2
24. BUTTON HEAD M8×35mm [BBT-M835]

[R]



[R]-SIDE

1. (R) STEP PLATE [S-GSX1308SP-R]
2. (R) BASE PLATE [S-GSX1308BP-R]
3. (R) HEEL GUARD [HG-1R]
4. BRAKE PEDAL 150 [BPD-1]
5. E CLIP M6 [ECP-6]
6. FLANGE NUT M8 [FNT-8]
7. PLAIN WASHER M6 [WS-6]
8. PEG WASHER M8 [PWS-8]
9. SOCKET HEAD M8×25mm [SBT-M825] ×2
10. FOOT PEG [PEG]
11. FOOT PEG END CAP [ST-002]
12. BASE PLATE COLLAR 5(BK) [BPCLR-5] ×2
13. BRAKE ROD M40 [BRD-M40]
14. PEDAL TIP (DELRIN) [ST-001D18]
15. BUTTON HEAD M6×20mm [BBT-M620]
16. BUTTON HEAD M6×25mm [BBT-M625] ×2
17. BUTTON HEAD M8×15mm [BBT-M815] ×2
18. STUD BOLT M8×55mm [STBT-S]
19. BEARING COLLAR SUS [BGCLR-SUS]

Not Pictured:

BRAKE LIGHT SWITCH P-1.0 [BSW-1]

RETURN SPRING 40 [RS-RSP]  
(Optional Part - sold separately)

