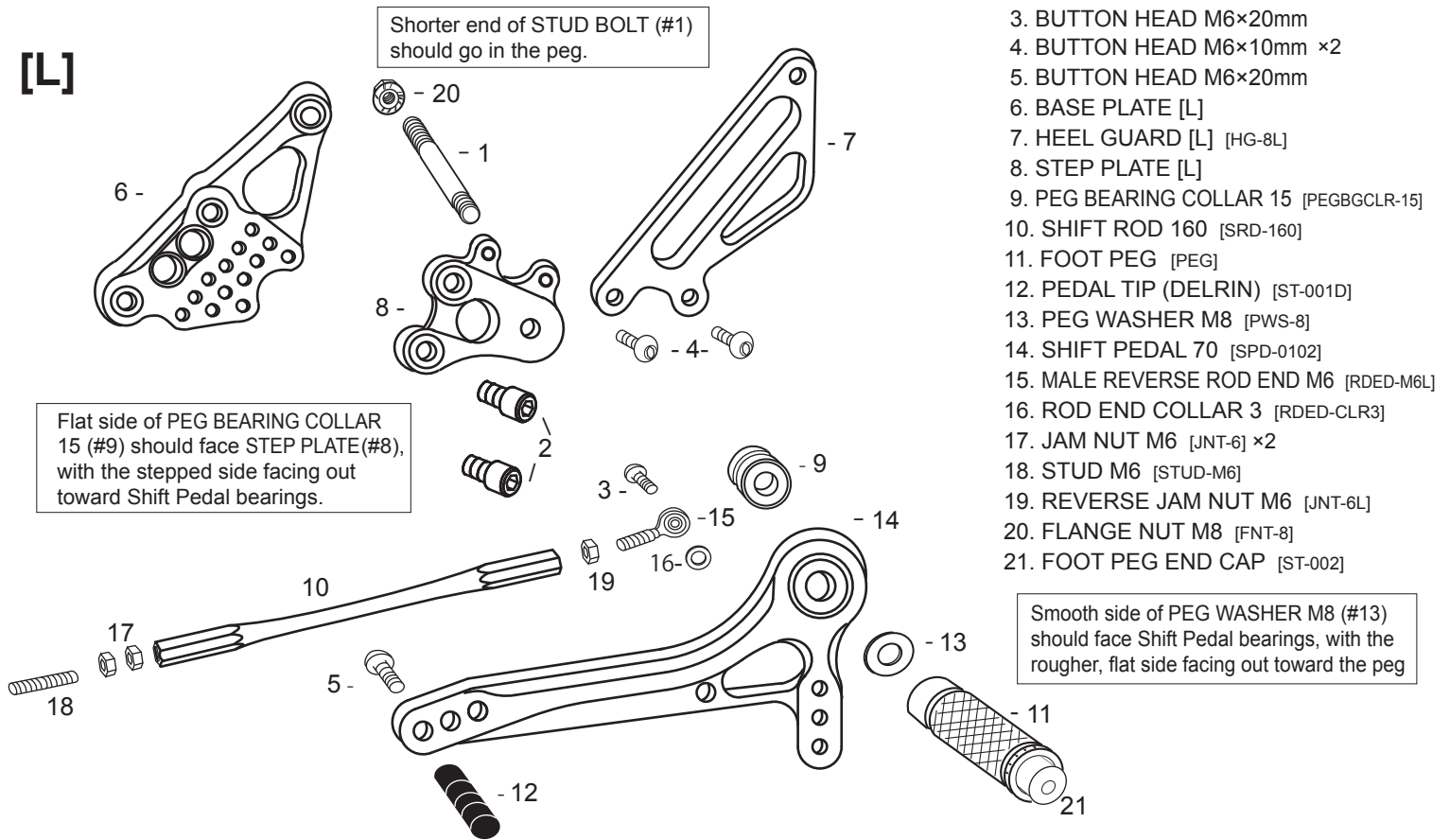


# SUZUKI TL1000 R

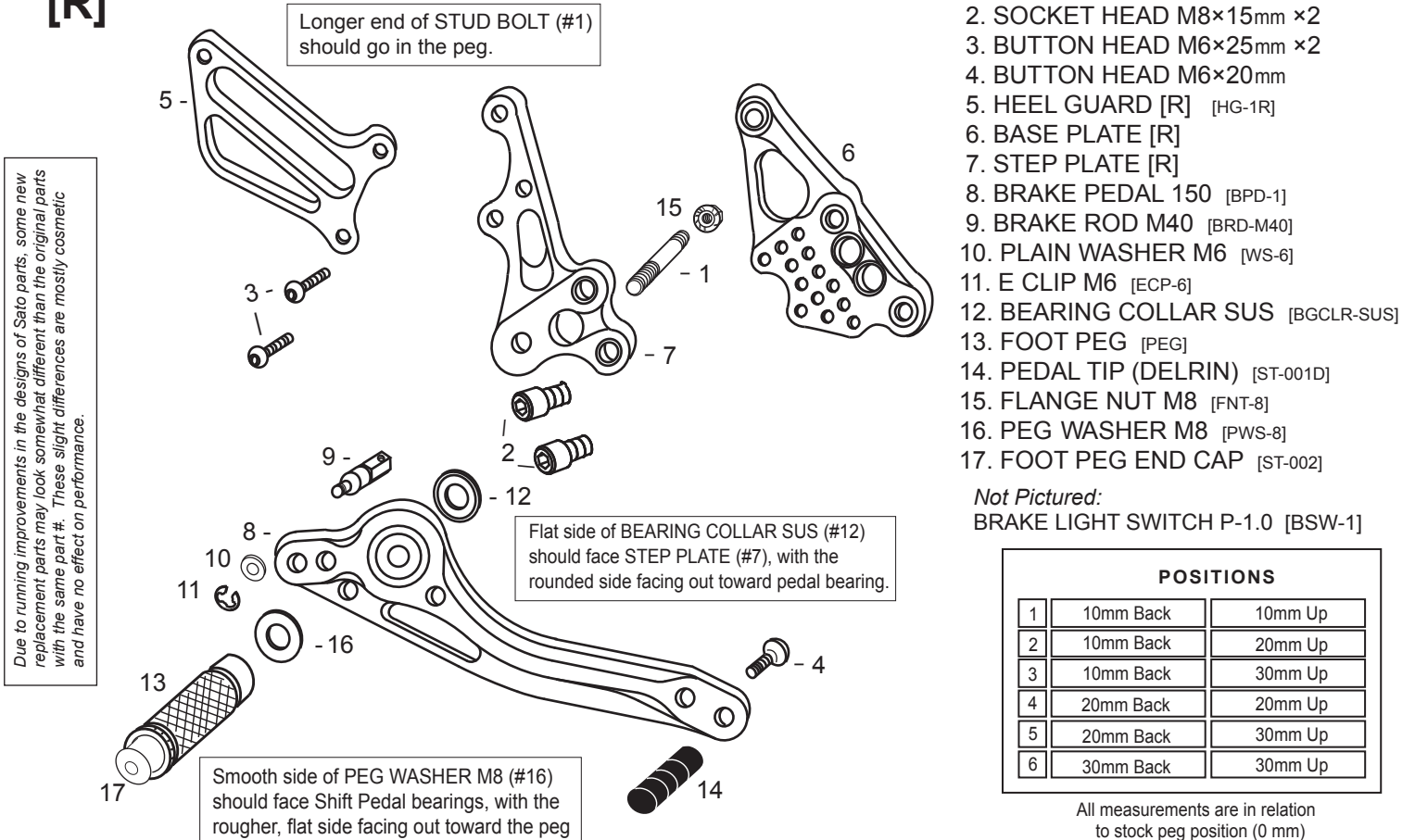
[L]



1. STUD BOLT LONG (M8 x 65) [STBT-L]
2. SOCKET HEAD M8x15mm x2
3. BUTTON HEAD M6x20mm
4. BUTTON HEAD M6x10mm x2
5. BUTTON HEAD M6x20mm
6. BASE PLATE [L]
7. HEEL GUARD [L] [HG-8L]
8. STEP PLATE [L]
9. PEG BEARING COLLAR 15 [PEGBGCLR-15]
10. SHIFT ROD 160 [SRD-160]
11. FOOT PEG [PEG]
12. PEDAL TIP (DELRIN) [ST-001D]
13. PEG WASHER M8 [PWS-8]
14. SHIFT PEDAL 70 [SPD-0102]
15. MALE REVERSE ROD END M6 [RDED-M6L]
16. ROD END COLLAR 3 [RDED-CLR3]
17. JAM NUT M6 [JNT-6] x2
18. STUD M6 [STUD-M6]
19. REVERSE JAM NUT M6 [JNT-6L]
20. FLANGE NUT M8 [FNT-8]
21. FOOT PEG END CAP [ST-002]

※ADJUST THE STOCK CHANGE ARM WHEN INSTALLING SATO REAR SETS.

[R]



1. STUD BOLT SHORT (M8 x 55) [STBT-S]
2. SOCKET HEAD M8x15mm x2
3. BUTTON HEAD M6x25mm x2
4. BUTTON HEAD M6x20mm
5. HEEL GUARD [R] [HG-1R]
6. BASE PLATE [R]
7. STEP PLATE [R]
8. BRAKE PEDAL 150 [BPD-1]
9. BRAKE ROD M40 [BRD-M40]
10. PLAIN WASHER M6 [WS-6]
11. E CLIP M6 [ECP-6]
12. BEARING COLLAR SUS [BGCLR-SUS]
13. FOOT PEG [PEG]
14. PEDAL TIP (DELRIN) [ST-001D]
15. FLANGE NUT M8 [FNT-8]
16. PEG WASHER M8 [PWS-8]
17. FOOT PEG END CAP [ST-002]

Not Pictured:  
BRAKE LIGHT SWITCH P-1.0 [BSW-1]

### POSITIONS

Position	Back	Up
1	10mm Back	10mm Up
2	10mm Back	20mm Up
3	10mm Back	30mm Up
4	20mm Back	20mm Up
5	20mm Back	30mm Up
6	30mm Back	30mm Up

All measurements are in relation to stock peg position (0 mm)

Due to running improvements in the designs of Sato parts, some new replacement parts may look somewhat different than the original parts with the same part #. These slight differences are mostly cosmetic and have no effect on performance.