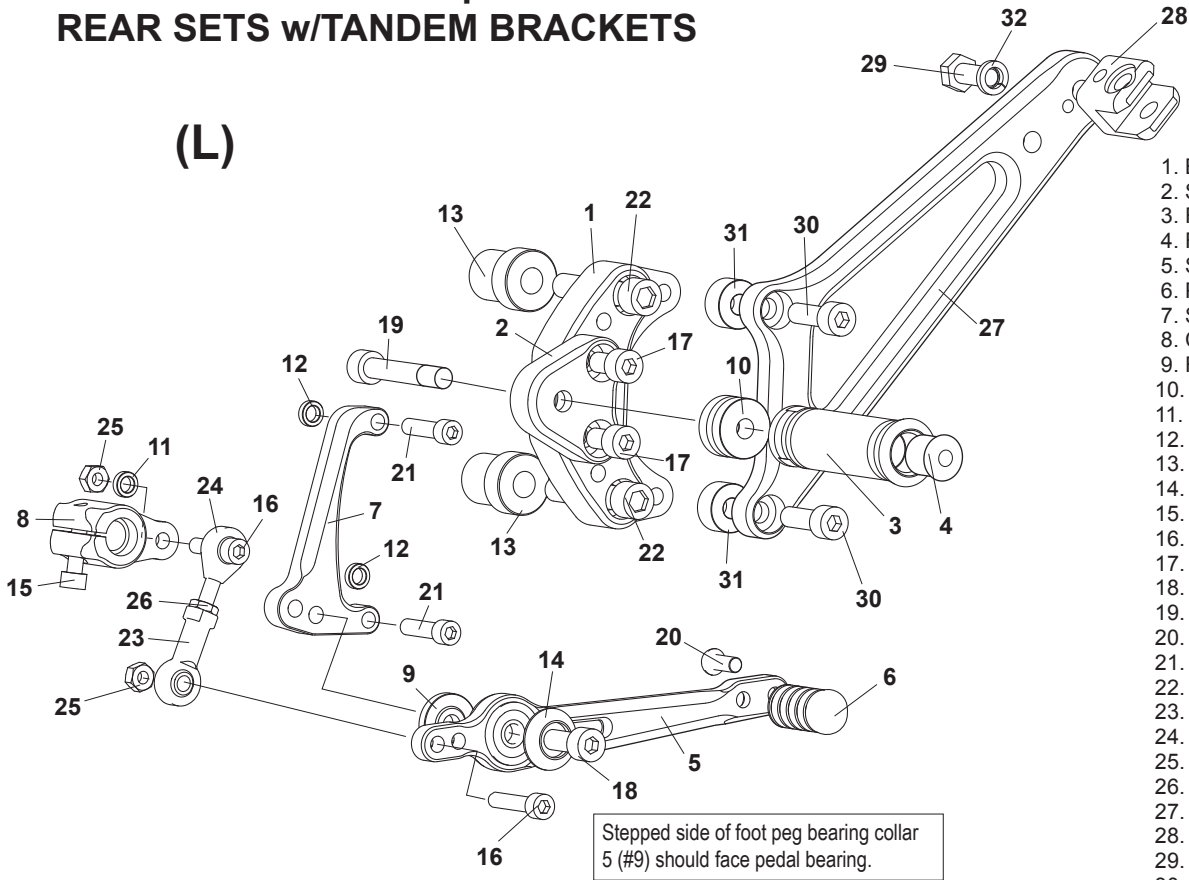


HARLEY-DAVIDSON Sportster XL883/1200 '04-'13 REAR SETS w/TANDEM BRACKETS

(L)



1. BASE PLATE [L] (BK)
2. STEP PLATE [L]
3. FOOT PEG
4. FOOT PEG END CAP
5. SHIFT PEDAL (SPD104)
6. PEDAL TIP [DELIRIN]
7. SHIFT BASE
8. CHANGE ARM HD
9. FOOT PEG BEARING COLLAR 5
10. FOOT PEG COLLAR 15
11. COLLAR 3
12. COLLAR 3-2 ×2
13. COLLAR 30-10 ×2
14. BEARING BOLT COVER
15. SOCKET HEAD M6×20mm
16. SOCKET HEAD M6×25mm ×2
17. SOCKET HEAD M8×15mm ×2
18. SOCKET HEAD M8×35mm
19. SOCKET HEAD M8×40mm
20. BUTTON HEAD M6×15mm
21. INCH BOLT 1/4-20UNC×1in ×2
22. INCH BOLT 3/8-16UNC×2in ×2
23. FEMALE ROD END M6
24. MALE ROD END M6
25. PLAIN NUT M6 ×2
26. JAM NUT M6
27. TANDEM BRACKET [L] (BK)
28. TANDEM BRACKET CLAMP (BK)
29. HEX HEAD M8×20mm
30. SOCKET HEAD M8×25mm ×2
31. COLLAR 10-8 ×2
32. SPLIT WASHER M8

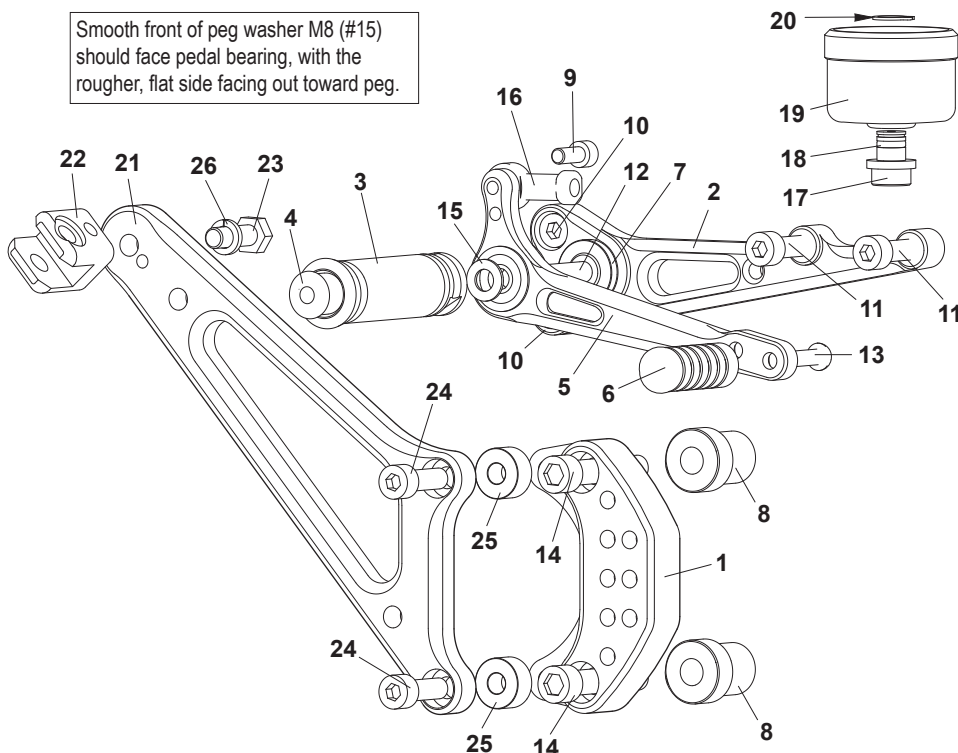


(R)

No brake light switch included.

Flat side of foot peg bearing collar 5 (#7) should face step plate (#2).
With the stepped side facing out toward pedal bearing.

Smooth front of peg washer M8 (#15) should face pedal bearing, with the rougher, flat side facing out toward peg.



1. BASE PLATE [R] (BK)
2. STEP PLATE [R]
3. FOOT PEG
4. FOOT PEG END CAP
5. BRAKE PEDAL (BPD104)
6. PEDAL TIP [DELIRIN]
7. FOOT PEG BEARING COLLAR 5
8. COLLAR 30-8 ×2
9. SOCKET HEAD M6×15mm
10. SOCKET HEAD M8×15mm ×2
11. SOCKET HEAD M8×35mm ×2
12. SOCKET HEAD M8×40mm
13. BUTTON HEAD M6×20mm
14. INCH BOLT 3/8-16UNC×2in ×2
15. PEG WASHER M8
16. FEMALE ROD END 6-M8
17. MASTER CYLINDER ADAPTOR
18. O RING P8
19. MASTER CYLINDER CUP (BK)
20. C CLIP JG-11
21. TANDEM BRACKET [R] (BK)
22. TANDEM BRACKET CLAMP (BK)
23. HEX HEAD M8×25mm
24. SOCKET HEAD M8×25mm ×2
25. COLLAR 10-8 ×2
26. SPLIT WASHER M8