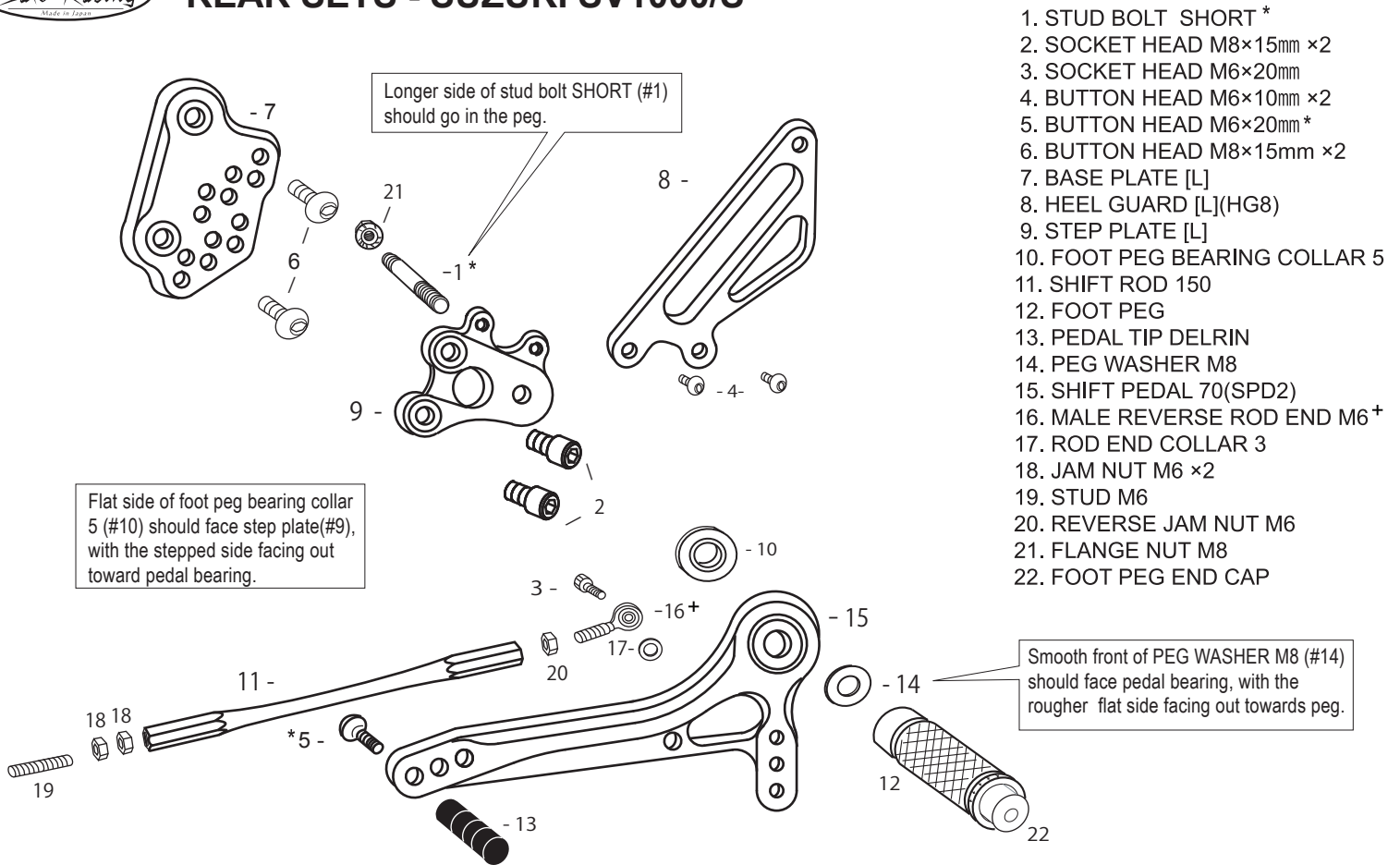


# REAR SETS - SUZUKI SV1000/S



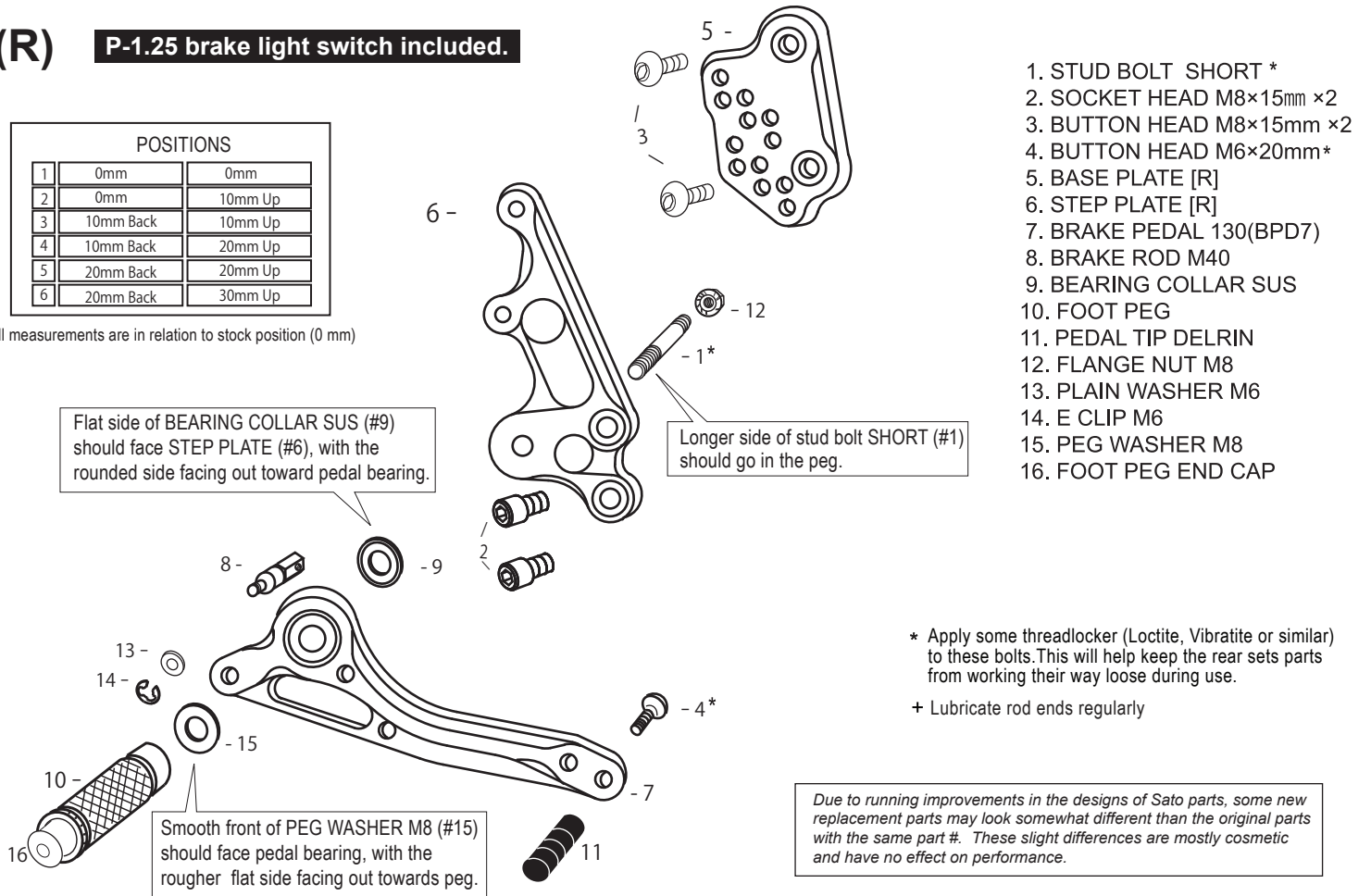
1. STUD BOLT SHORT \*
2. SOCKET HEAD M8×15mm ×2
3. SOCKET HEAD M6×20mm
4. BUTTON HEAD M6×10mm ×2
5. BUTTON HEAD M6×20mm \*
6. BUTTON HEAD M8×15mm ×2
7. BASE PLATE [L]
8. HEEL GUARD [L](HG8)
9. STEP PLATE [L]
10. FOOT PEG BEARING COLLAR 5
11. SHIFT ROD 150
12. FOOT PEG
13. PEDAL TIP DELRIN
14. PEG WASHER M8
15. SHIFT PEDAL 70(SPD2)
16. MALE REVERSE ROD END M6+
17. ROD END COLLAR 3
18. JAM NUT M6 ×2
19. STUD M6
20. REVERSE JAM NUT M6
21. FLANGE NUT M8
22. FOOT PEG END CAP

※ ADJUST THE STOCK CHANGE ARM WHEN INSTALLING SATO REAR SETS.

## (R) P-1.25 brake light switch included.

POSITIONS		
1	0mm	0mm
2	0mm	10mm Up
3	10mm Back	10mm Up
4	10mm Back	20mm Up
5	20mm Back	20mm Up
6	20mm Back	30mm Up

All measurements are in relation to stock position (0 mm)



1. STUD BOLT SHORT \*
2. SOCKET HEAD M8×15mm ×2
3. BUTTON HEAD M8×15mm ×2
4. BUTTON HEAD M6×20mm\*
5. BASE PLATE [R]
6. STEP PLATE [R]
7. BRAKE PEDAL 130(BPD7)
8. BRAKE ROD M40
9. BEARING COLLAR SUS
10. FOOT PEG
11. PEDAL TIP DELRIN
12. FLANGE NUT M8
13. PLAIN WASHER M6
14. E CLIP M6
15. PEG WASHER M8
16. FOOT PEG END CAP

\* Apply some threadlocker (Loctite, Vibratite or similar) to these bolts. This will help keep the rear sets parts from working their way loose during use.

+ Lubricate rod ends regularly

Due to running improvements in the designs of Sato parts, some new replacement parts may look somewhat different than the original parts with the same part #. These slight differences are mostly cosmetic and have no effect on performance.