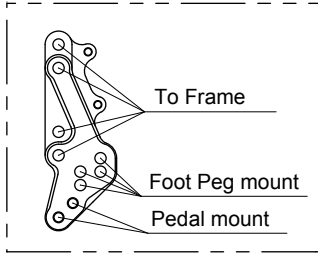
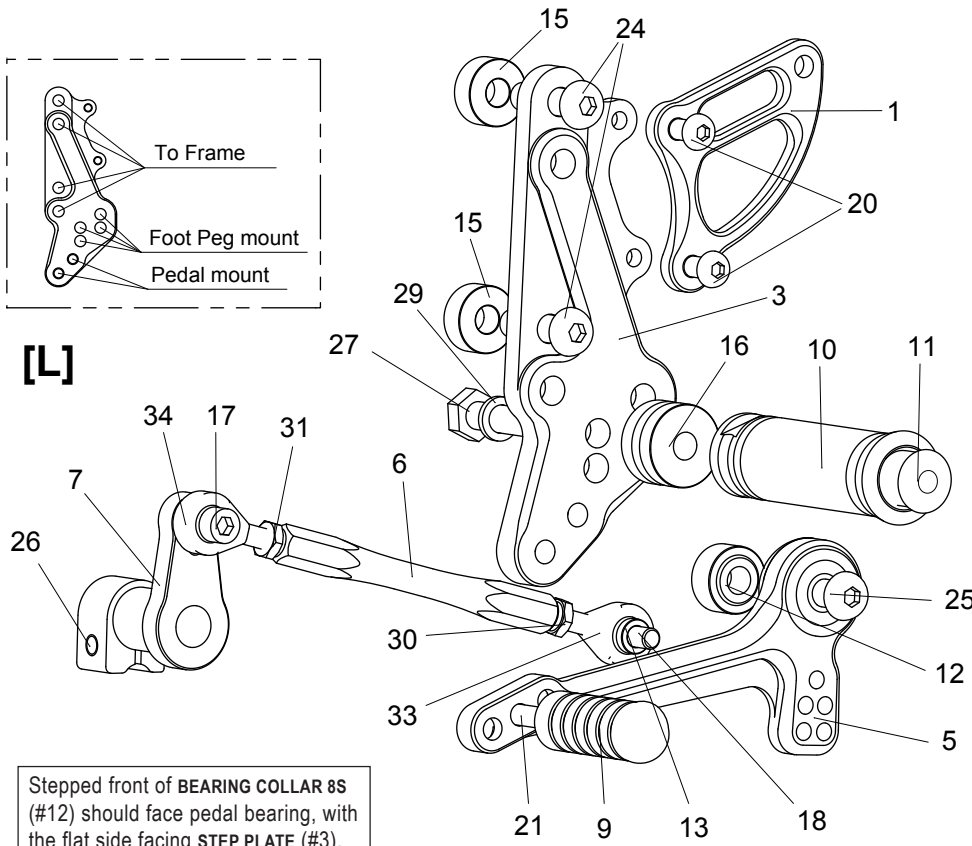


Triumph Speed Triple 1050 ('11-) REAR SETS



[L]

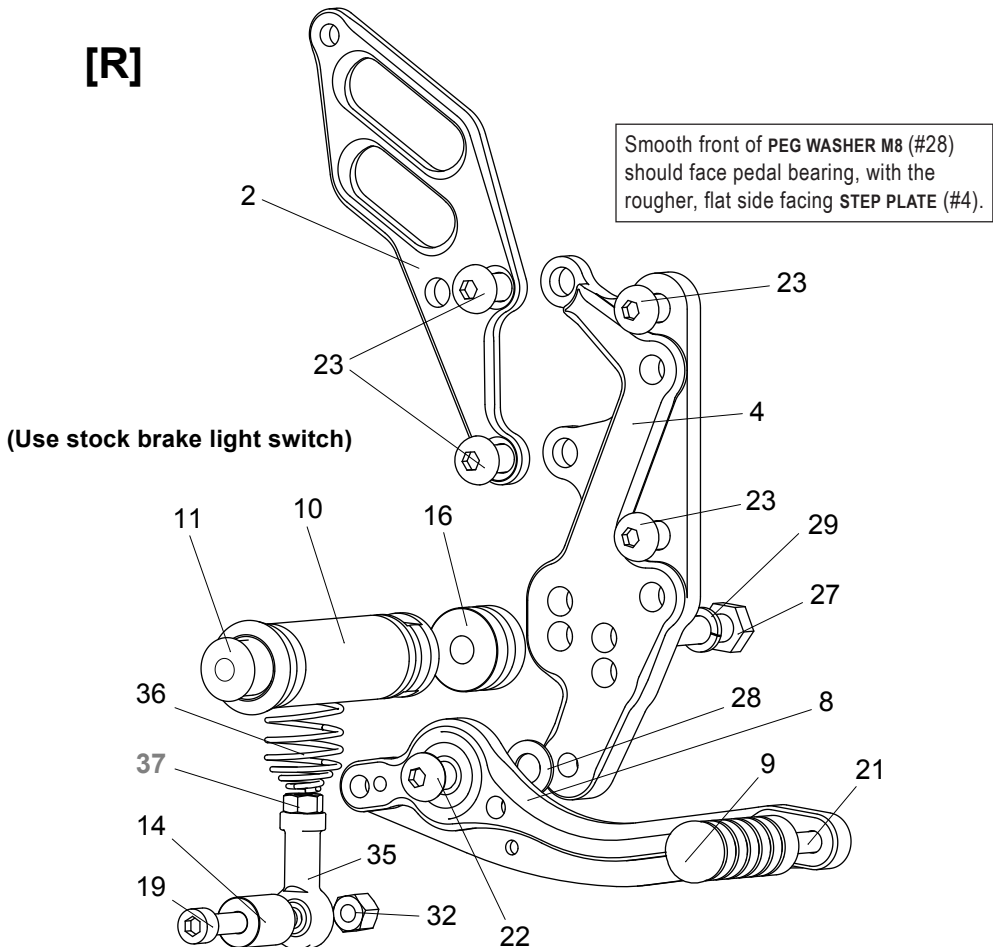


Stepped front of BEARING COLLAR 8S (#12) should face pedal bearing, with the flat side facing STEP PLATE (#3).

[L] SIDE

1. HEEL GUARD [L] [HG11L]
3. STEP PLATE [L]
5. SHIFT PEDAL [SPD-0912]
6. SHIFT ROD 100
7. CHANGE ARM CA-6 (BK)
9. PEDAL TIP (DELRIN)
10. FOOT PEG
11. FOOT PEG END CAP
12. BEARING COLLAR 10S
13. ROD END COLLAR 3 (GD)
15. COLLAR 8-20 (BK) (x2)
16. PEG COLLAR 15
17. SOCKET HEAD M6x18
18. SOCKET HEAD M6x20
20. BUTTON HEAD M6x10 (x2)
21. BUTTON HEAD M6x20
24. BUTTON HEAD M8x30 (x2)
25. BUTTON HEAD M8x35
26. FLANGE HEAD M6x20
27. HEX HEAD M8x40
29. SPLIT WASHER M8
30. JAM NUT M6
31. REVERSE JAM NUT M6
33. MALE ROD END M6
34. MALE REVERSE ROD END M6

[R]



Smooth front of PEG WASHER M8 (#28) should face pedal bearing, with the rougher, flat side facing STEP PLATE (#4).

(Use stock brake light switch)

[R] SIDE

2. HEEL GUARD [R] [HG16R]
4. STEP PLATE [R]
8. BRAKE PEDAL [BP165-30]
9. PEDAL TIP (DELRIN)
10. FOOT PEG
11. FOOT PEG END CAP
13. ROD END COLLAR 3 (GD)
14. BRAKE ROD COLLAR 19 (BK)
16. PEG COLLAR 15
19. SOCKET HEAD M6x45
21. BUTTON HEAD M6x20
22. BUTTON HEAD M8x25
23. BUTTON HEAD M8x20 (x4)
27. HEX HEAD M8x40
28. PEG WASHER M8
29. SPLIT WASHER M8
32. LOCK NUT M6
35. FEMALE ROD END 6-M8
36. BRAKE RETURN SPRING 40
37. NUT (TRIUMPH PART)