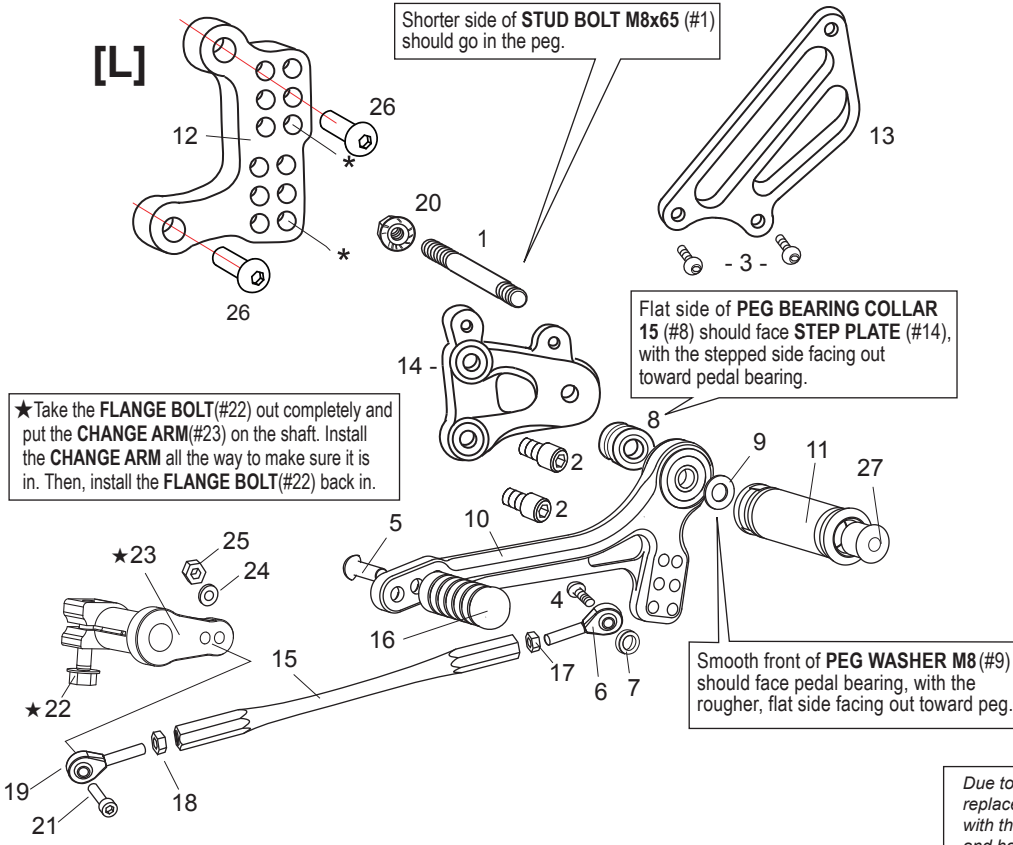


TRIUMPH T509/T595/955i/ SPEED TRIPLE (-'10) REAR SETS (part# T-595RS)

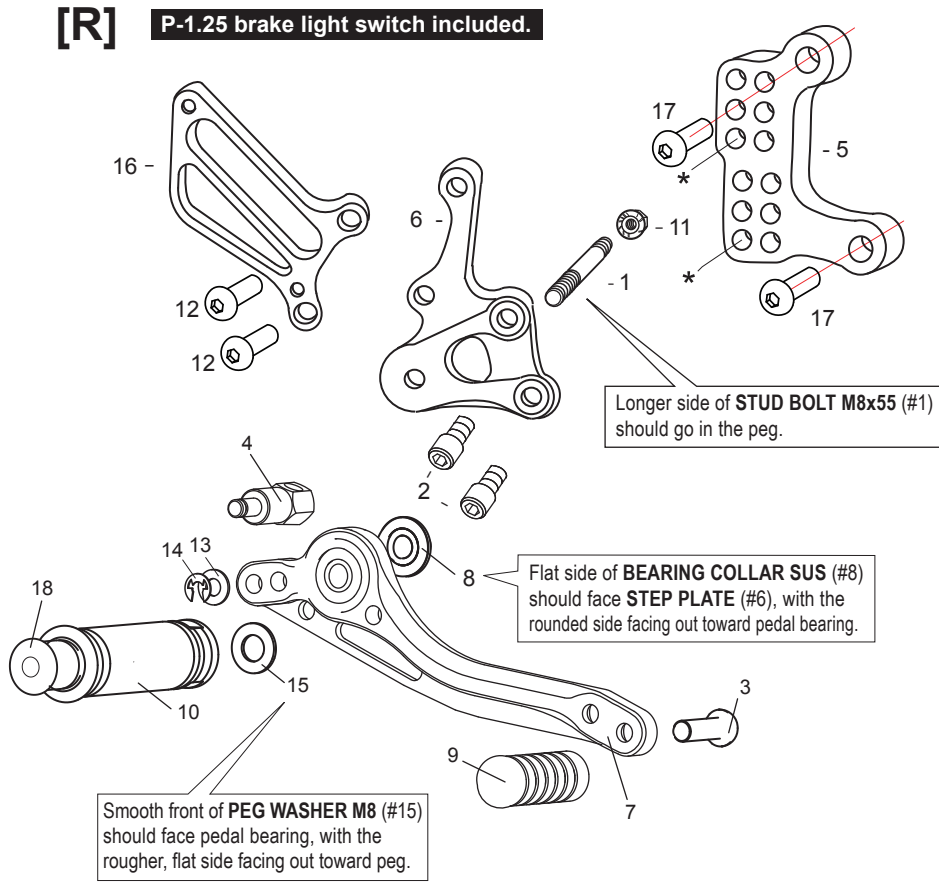


[L]-SIDE

1. STUD BOLT M8×65 [STBT-L]
2. SOCKET HEAD M8×15mm [SBT-M815] ×2
3. BUTTON HEAD M6×10mm [BBT-M610] ×2
4. BUTTON HEAD M6×20mm [BBT-M620]
5. BUTTON HEAD M6×20mm [BBT-M620]
6. MALE ROD END M6 [RDED-M6]
7. ROD END COLLAR 3(GD) [RDED-CLR3]
8. FOOT PEG BEARING COLLAR 15 [PEGBGCLR-15]
9. PEG WASHER M8 [PWS-8]
10. SHIFT PEDAL [SPD-0102]
11. FOOT PEG [PEG]
12. (L) BASE PLATE [T-595BP]
13. (L) HEEL GUARD [HG-2L]
14. (L) STEP PLATE [T-595SP-L]
15. SHIFT ROD 145 for T595 [SRD-145]
15. SHIFT ROD 180 for T509/955i [SRD-180]
16. PEDAL TIP (DELTRIN) [ST-001D]
17. JAM NUT M6 [JNT-6]
18. REVERSE JAM NUT M6 [JNT-6L]
19. MALE REVERSE ROD END M6 [RDED-M6L]
20. FLANGE NUT M8 [FNT-8]
21. SOCKET HEAD M6×25mm [SBT-M625]
22. FLANGE HEAD M6×20mm [FGBT-M620]
23. CHANGE ARM (BK) [CA-5]
24. PLAIN WASHER M6 [WS-6]
25. PLAIN NUT M6 [NUT-6]
26. BUTTON HEAD M8×25mm [BBT-M825] ×2
27. FOOT PEG END CAP [ST-002]

Due to running improvements in the designs of Sato parts, some new replacement parts may look somewhat different than the original parts with the same part #. These slight differences are mostly cosmetic and have no effect on performance.

[R]-SIDE



1. STUD BOLT M8×55 [STBT-S]
2. SOCKET HEAD M8×15mm [SBT-M815] ×2
3. BUTTON HEAD M6×25mm [BBT-M625]
4. BRAKE ROD M40 [BRD-M40]
5. (R) BASE PLATE [T-595BP]
6. (R) STEP PLATE [T-595SP-R]
7. BRAKE PEDAL 150 [BPD-1]
8. BEARING COLLAR SUS [BGCLR-SUS]
9. PEDAL TIP (DELTRIN) [ST-001D]
10. FOOT PEG [PEG]
11. FLANGE NUT M8 [FNT-8]
12. BUTTON HEAD M8×30mm [BBT-M830] ×2
13. PLAIN WASHER M6 [WS-6]
14. E CLIP M6 [ECP-6]
15. PEG WASHER M8 [PWS-8]
16. (R) HEEL GUARD [HG-9R]
17. BUTTON HEAD M8×25mm [BBT-M825] ×2
18. FOOT PEG END CAP [ST-002]

POSITIONS		
1	0mm	0mm
2	0mm	10mm Up
3	0mm	20mm Up
★ 4	10mm Back	0mm
5	10mm Back	10mm Up
6	10mm Back	20mm Up

All measurements are in relation to stock position (0 mm)

★ Position 4 may interfere with the stock exhaust pipe on some models.