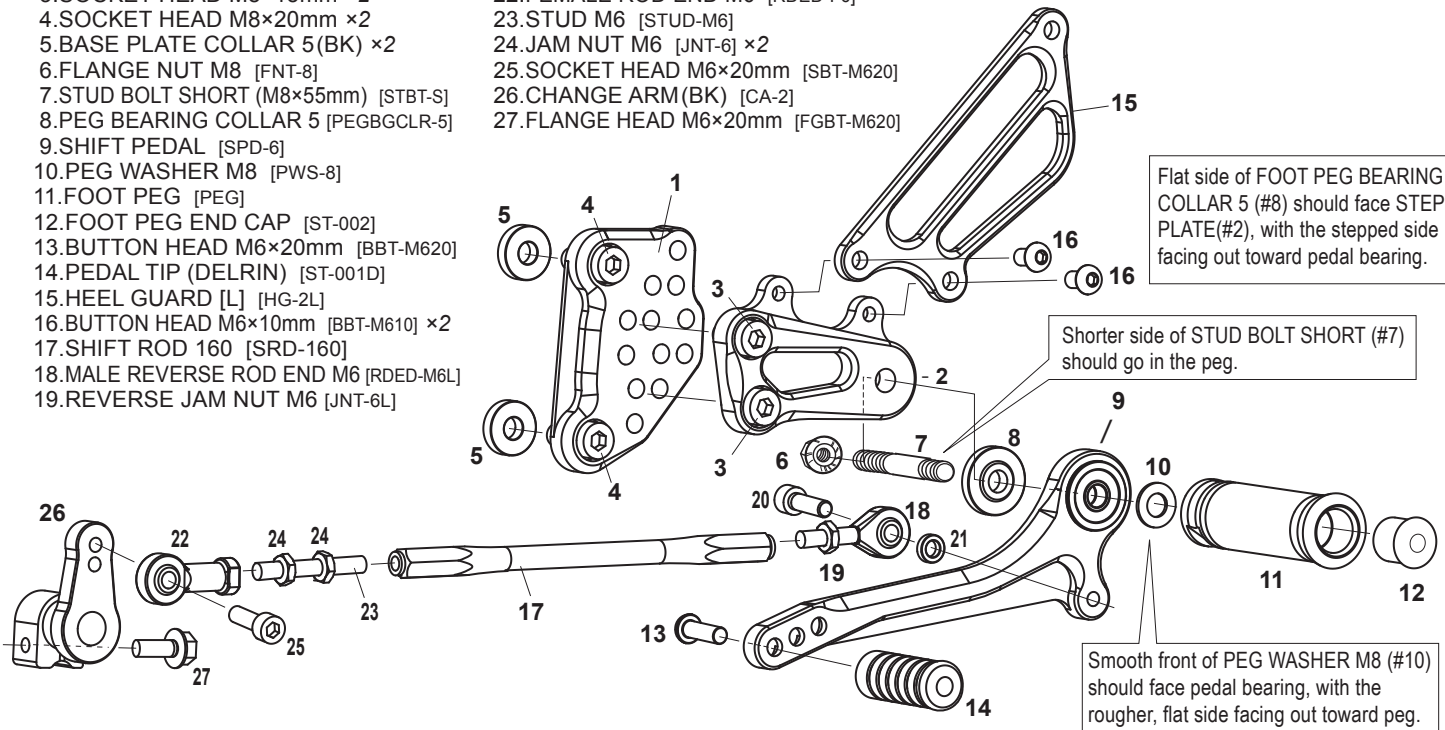


### [L] SIDE

- 1.[L] BASE PLATE [H-VFR8BP-L]
- 2.[L] STEP PLATE [H-VFR8SP-L]
- 3.SOCKET HEAD M8×15mm ×2
- 4.SOCKET HEAD M8×20mm ×2
- 5.BASE PLATE COLLAR 5(BK) ×2
- 6.FLANGE NUT M8 [FNT-8]
- 7.STUD BOLT SHORT (M8×55mm) [STBT-S]
- 8.PEG BEARING COLLAR 5 [PEGBGCLR-5]
- 9.SHIFT PEDAL [SPD-6]
- 10.PEG WASHER M8 [PWS-8]
- 11.FOOT PEG [PEG]
- 12.FOOT PEG END CAP [ST-002]
- 13.BUTTON HEAD M6×20mm [BBT-M620]
- 14.PEDAL TIP (DELRIN) [ST-001D]
- 15.HEEL GUARD [L] [HG-2L]
- 16.BUTTON HEAD M6×10mm [BBT-M610] ×2
- 17.SHIFT ROD 160 [SRD-160]
- 18.MALE REVERSE ROD END M6 [RDED-M6L]
- 19.REVERSE JAM NUT M6 [JNT-6L]

- 20.SOCKET HEAD M6×20mm [SBT-M620]
- 21.ROD END COLLAR 3(GD) [RDED-CLR3]
- 22.FEMALE ROD END M6 [RDED-F6]
- 23.STUD M6 [STUD-M6]
- 24.JAM NUT M6 [JNT-6] ×2
- 25.SOCKET HEAD M6×20mm [SBT-M620]
- 26.CHANGE ARM (BK) [CA-2]
- 27.FLANGE HEAD M6×20mm [FGBT-M620]

### [L]



### [R]

**P-1.25 brake light switch included.**

### [R] SIDE

- 1.[R] BASE PLATE [H-VFR8BP-R]
- 2.[R] STEP PLATE [H-VFR8SP-R]
- 3.SOCKET HEAD M8×15mm [SBT-M815] ×2
- 4.SOCKET HEAD M8×20mm [SBT-M820] ×2
- 5.BASE PLATE COLLAR 5 (BK) [BPCLR-5]
- 6.BASE PLATE COLLAR 2 (BK) [BPCLR-2]
- 7.HEAT GUARD STAY (BK) [HGS-3]
- 8.SOCKET HEAD M6×20mm [SBT-M620]
- 9.FLANGE NUT M8 [FNT-8]
- 10.BEARING COLLAR SUS [BGCLR-SUS]
- 11.BRAKE PEDAL [BPD-2]
- 12.PEG WASHER M8 [PWS-8]
- 13.STUD BOLT SHORT (M8×55mm) [STBT-S]
- 14.FOOT PEG [PEG]
- 15.FOOT PEG END CAP [ST-002]
- 16.BUTTON HEAD M6×20mm [BBT-M620]
- 17.PEDAL TIP (DELRIN) [ST-001D]
- 18.BRAKE ROD M [BRD-M840]
- 19.PLAIN WASHER M6 [WS-6]
- 20.E-CLIP [ECP-6]
- 21.HEEL GUARD [R] [HG-1R]
- 22.BUTTON HEAD M6×35mm [BBT-M635] ×2
- 23.PLAIN NUT M6 [NUT-6] ×2
- 24.SOCKET HEAD M6×10mm [SBT-M610]
- 25.PCV STAY

