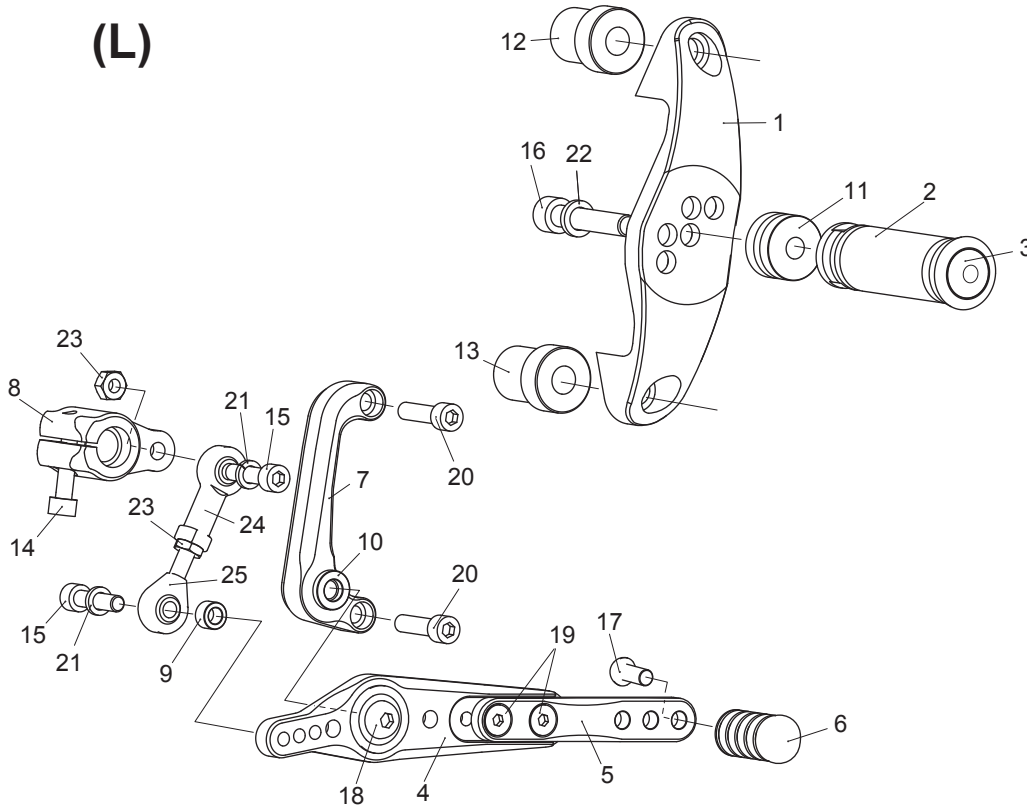


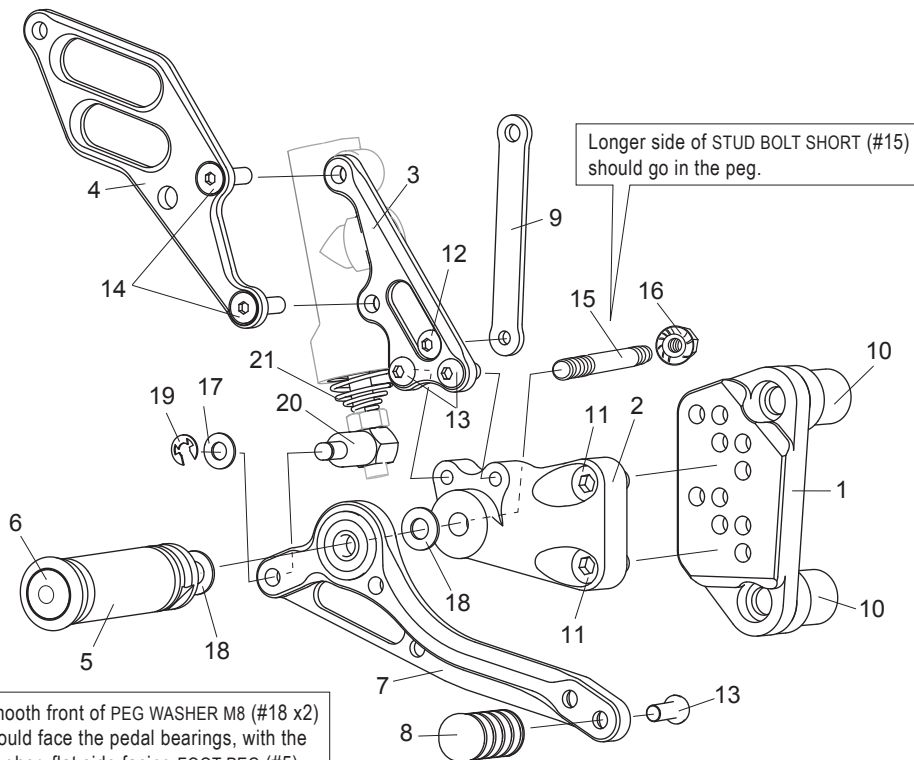
# HARLEY-DAVIDSON Sportster XR1200 ('08-'13) REAR SETS

(L)



1. STEP PLATE [L]
2. FOOT PEG
3. FOOT PEG END CAP
4. SHIFT PEDAL (SPD-XR1209, BK)
5. SHIFT PEDAL (SPD8, BK)
6. PEDAL TIP DELRIN SHORT
7. SHIFT BASE
8. CHANGE ARM (CA-HD)
9. ROD END COLLAR 6
10. COLLAR 3
11. FOOT PEG COLLAR 15
12. COLLAR 30
13. COLLAR 32
14. SOCKET HEAD M6×20
15. SOCKET HEAD M6×25 ×2
16. SOCKET HEAD M8×40
17. BUTTON HEAD M6×15
18. BUTTON HEAD M8×30
19. FLAT HEAD M6×10 ×2
20. (1/4-20) 1 INCH BOLT ×2
21. SPLIT WASHER M6 ×2
22. SPLIT WASHER M8
23. PLAIN NUT M6 ×2
24. FEMALE ROD END M6
25. MALE ROD END M6

(R) (USE STOCK BRAKE LIGHT SWITCH)



Longer side of STUD BOLT SHORT (#15) should go in the peg.

Smooth front of PEG WASHER M8 (#18 x2) should face the pedal bearings, with the rougher, flat side facing FOOT PEG (#5) and STEP PLATE (#2).

1. BASE PLATE [R]
2. STEP PLATE [R]
3. MASTER STAY
4. HEEL GUARD [R](HG16)
5. FOOT PEG
6. FOOT PEG END CAP
7. BRAKE PEDAL (BPD13)
8. PEDAL TIP DELRIN SHORT
9. UNIVERSAL BRACKET M6-75
10. COLLAR 32 ×2
11. SOCKET HEAD M8×15 ×2
12. BUTTON HEAD M6×10
13. BUTTON HEAD M6×15 ×3
14. FLAT HEAD M6×20 ×2
15. STUD BOLT SHORT
16. FLANGE NUT M8
17. PLAIN WASHER M6
18. PEG WASHER M8 ×2
19. E CLIP M6
20. BRAKE ROD M40
21. RETURN SPRING 40

## POSITIONS

	0mm Back	10mm Up
1	0mm Back	10mm Up
2	0mm Back	20mm Up
3	10mm Back	20mm Up
4	10mm Back	30mm Up
5	20mm Back	30mm Up

All measurements are in relation to stock position (0 mm)