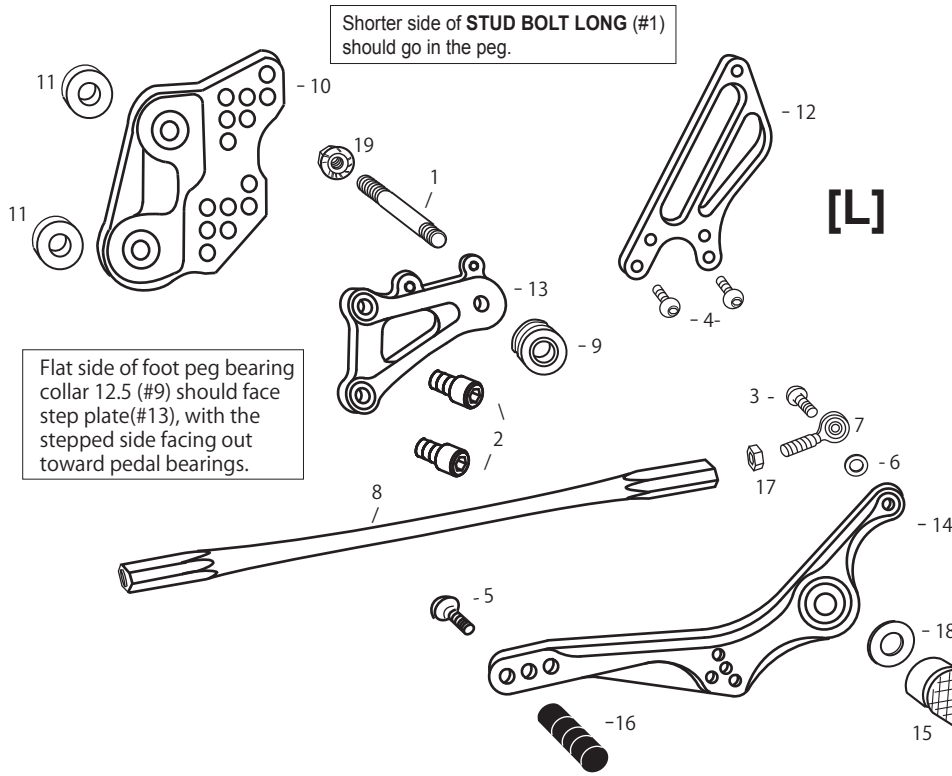


1. STUD BOLT LONG [STBT-L]
2. SOCKET HEAD M8×15mm ×2
3. BUTTON HEAD M6×20mm
4. BUTTON HEAD M6×10mm ×2
5. BUTTON HEAD M6×20mm
6. ROD END COLLAR 3
7. MALE REVERSE ROD END M6
8. SHIFT ROD 220
9. FOOT PEG BEARING COLLAR 12.5
- * 10. BASE PLATE [L]
11. BASE PLATE COLLAR 12 ×2
12. HEEL GUARD [L] [HG-3L]
13. STEP PLATE [L]
14. SHIFT PEDAL [SPD-3]
15. FOOT PEG
16. PEDAL TIP (DELRIN) [ST-001D]
17. REVERSE JAM NUT M6
18. PEG WASHER M8
19. FLANGE NUT M8
20. FOOT PEG END CAP



※ADJUST THE STOCK CHANGE ARM WHEN INSTALLING SATO REAR SETS.

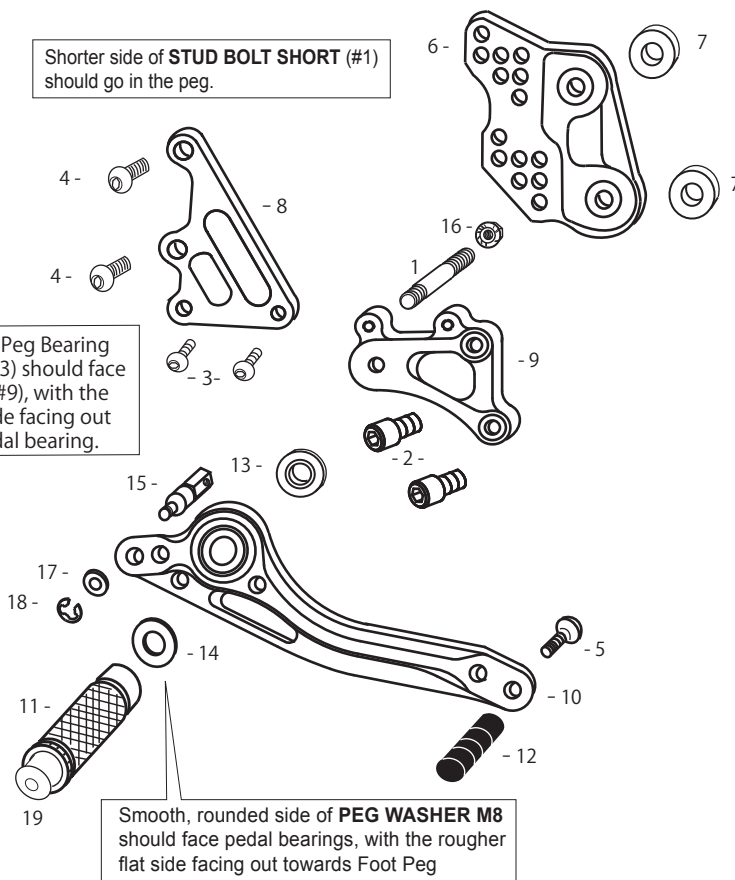
[R]

1. STUD BOLT SHORT [STBT-S]
2. SOCKET HEAD M8×15mm ×2
3. BUTTON HEAD M6×10mm ×2
4. BUTTON HEAD M8×20mm ×2
5. BUTTON HEAD M6×20mm
- * 6. BASE PLATE [R]
7. BASE PLATE COLLAR 12 ×2
- * 8. MASTER STAY
9. STEP PLATE [R]
10. BRAKE PEDAL 150 [BPD-1]
11. FOOT PEG
12. PEDAL TIP (DELRIN) [ST-001D]
13. FOOT PEG BEARING COLLAR 5
14. PEG WASHER M8
15. BRAKE ROD M40
16. FLANGE NUT M8
17. PLAIN WASHER M6
18. E CLIP M6
19. FOOT PEG END CAP

Not Pictured:
BRAKE LIGHT SWITCH P-1.25

* Parts no longer available

Due to running improvements in the designs of Sato parts, some new replacement parts may look somewhat different than the original parts with the same part #. These slight differences are mostly cosmetic and have no effect on performance.



POSITIONS

1	20mm Back	20mm Up
2	20mm Back	30mm Up
3	20mm Back	40mm Up
4	30mm Back	30mm Up
5	30mm Back	40mm Up
6	40mm Back	40mm Up
7	40mm Back	50mm Up