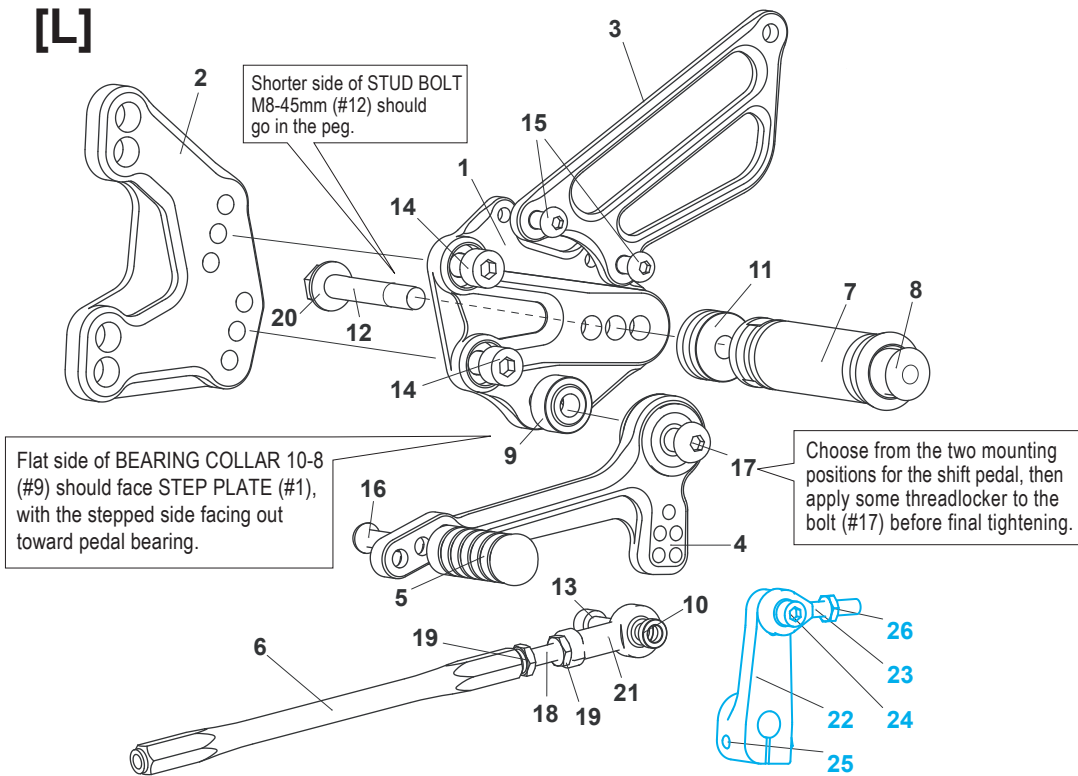


KAWASAKI ZX-10R ('11-'15) REAR SETS (part# K-ZX1011RS)

[L]

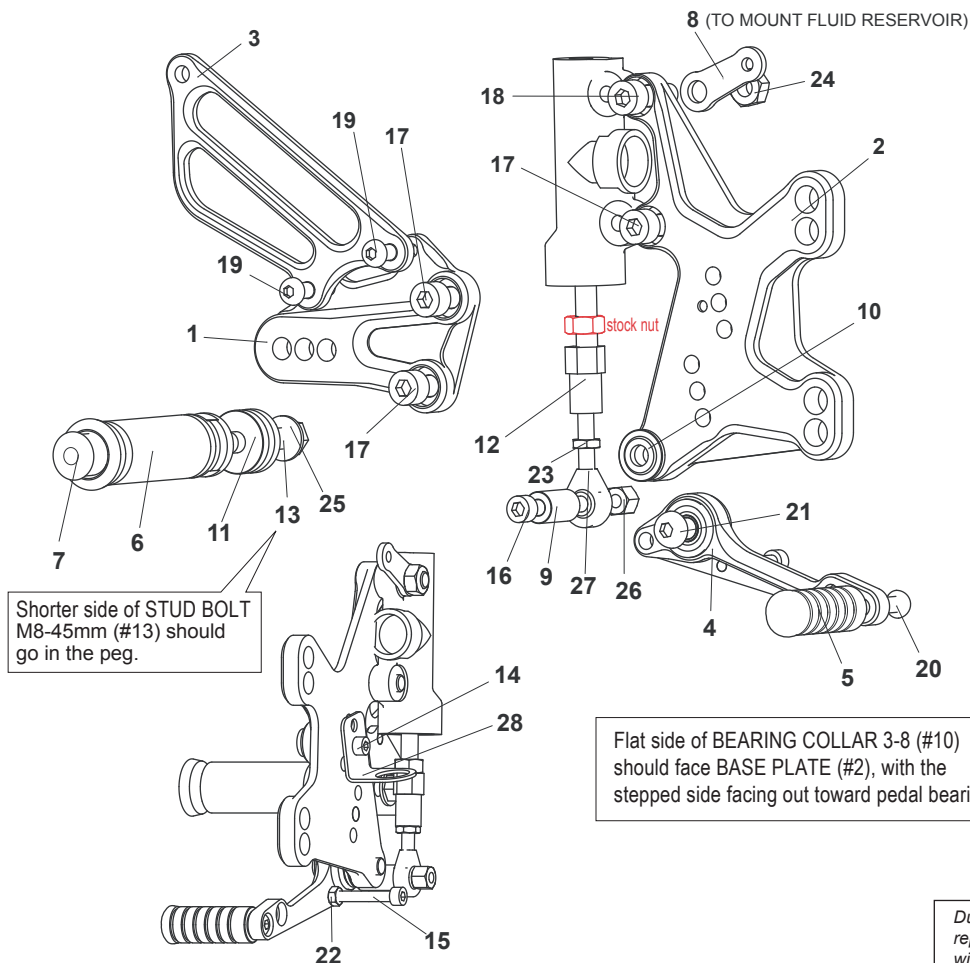


REVERSE SHIFT KIT (OPTION)
(Part# K-ZX1011RS-CHAM)

[L] SIDE

1. STEP PLATE [L] [K-ZX1011SP-L]
2. BASE PLATE [L] [K-ZX1011BP-L]
3. HEEL GUARD HG40-1L [HG-2L]
4. SHIFT PEDAL SCP65-75 [SPD0912]
5. PEDAL TIP (DELRIN) [ST-001D]
6. SHIFT ROD 160 [SRD-160]
7. FOOT PEG [PEG]
8. FOOT PEG END CAP [ST-002]
9. BEARING COLLAR 10S(BK) [BGCLR-10S]
10. ROD END COLLAR 3 (GD) [RDEDCLR3]
11. FOOT PEG COLLAR 12 [PEGCLR12]
12. STUD BOLT M8-45mm [STBT-M845]
13. SOCKET HEAD M6-20mm [SBT-M620]
14. SOCKET HEAD M8-15mm [SBT-M815] (x2)
15. BUTTON HEAD M6-10mm [BBT-M610] (x2)
16. BUTTON HEAD M6-20mm [BBT-M620]
17. BUTTON HEAD M8-35mm [BBT-M835]
18. STUD M6-45 [STUD-M6]
19. JAM NUT M6 [JNT-6] (x2)
20. FLANGE NUT M8 [FNT-8]
21. FEMALE ROD END M6 [RDED-F6]
22. CHANGE ARM SS45(BK) [CA-SS45]
23. MALE REVERSE ROD END M6 [RDED-M6L]
24. SOCKET HEAD M6-15mm
25. FLANGE HEAD M6-20mm [FGBT-M620]
26. REVERSE JAM NUT M6 [JNT-6L]

[R] (Use stock brake light switch)



[R] SIDE

1. STEP PLATE [R] [K-ZX1011SP-R]
2. BASE PLATE [R] [K-ZX1011BP-R]
3. HEEL GUARD HG40-1R [HG-2R]
4. BRAKE PEDAL SBP145 [BPD-15]
5. PEDAL TIP [DELRIN] [ST-001D]
6. FOOT PEG [PEG]
7. FOOT PEG END CAP [ST-002]
8. BRACKET M8-M6-25(BK) [UB-M825]
9. COLLAR 20-6(BK) [CLR20-6]
10. BEARING COLLAR 3S(BK) [PEGBGCLR-3SB]
11. FOOT PEG COLLAR 12 [PEGCLR12]
12. BRAKE ROD ADAPTOR M6-8 [BRD-ADPTRM6-8]
13. STUD BOLT M8-45mm [STBT-M845]
14. SOCKET HEAD M5-10mm [SBT-M510]
15. SOCKET HEAD M5-35mm [SBT-M535]
16. SOCKET HEAD M6-45mm [SBT-M645]
17. SOCKET HEAD M8-15mm [SBT-M815] (x3)
18. SOCKET HEAD M8-25mm [SBT-M825]
19. BUTTON HEAD M6-10mm [BBT-M610] (x2)
20. BUTTON HEAD M6-20mm [BBT-M620]
21. BUTTON HEAD M8-30mm [BBT-M830]
22. NUT M5 [NUT-5]
23. JAM NUT M6 [JNT-6]
24. NUT M8 [NUT-8]
25. FLANGE NUT M8 [FNT-8]
26. LOCK NUT M6 [LNT-6]
27. MALE ROD END M6 [RDED-M6]
28. PULL SWITCH STAY 16 [PSTAY-16]

Due to running improvements in the designs of Sato parts, some new replacement parts may look somewhat different than the original parts with the same part #. These slight differences are mostly cosmetic and have no effect on performance.