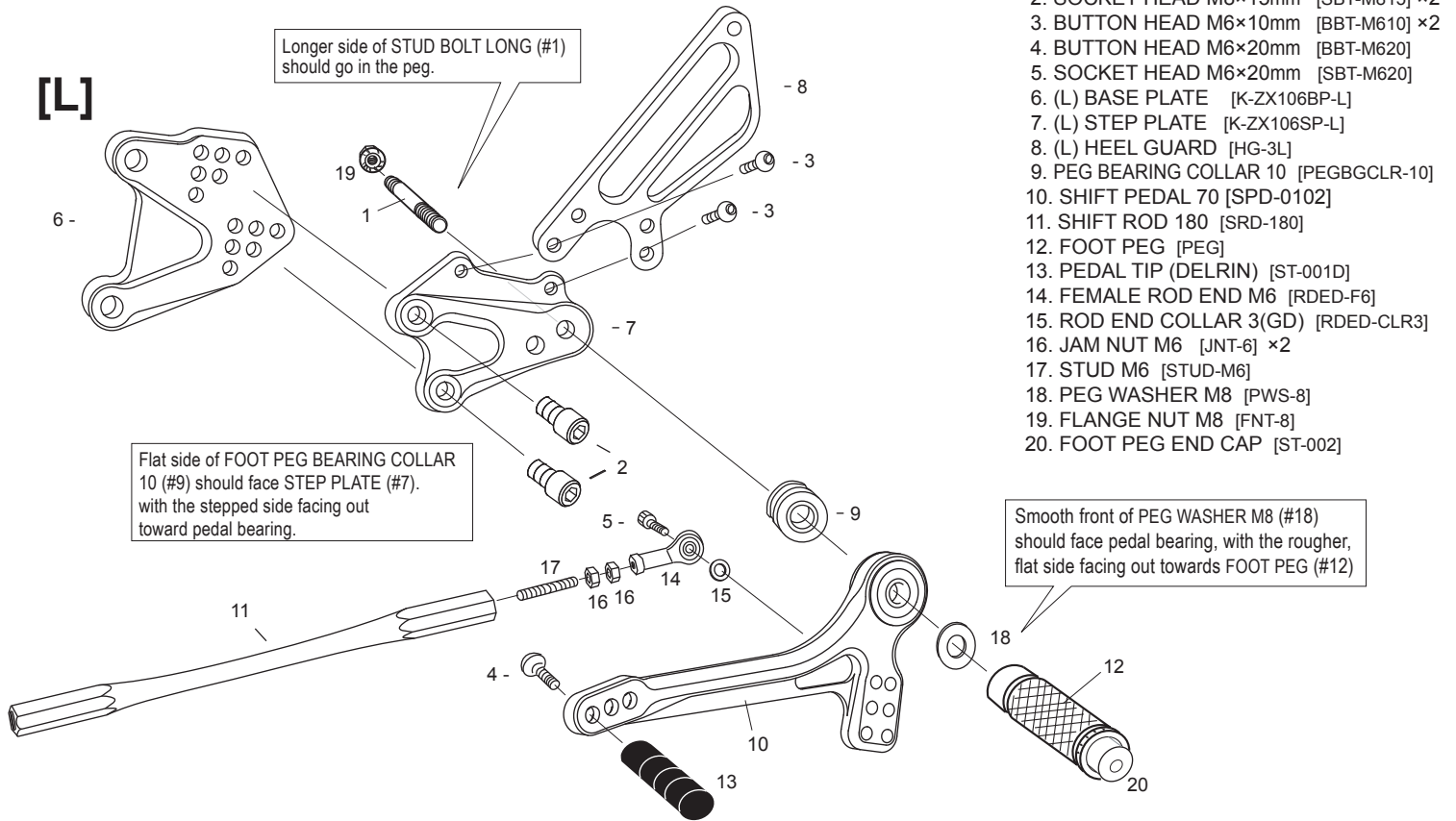


KAWASAKI ZX-10R ('06-'07) REAR SETS

part# K-ZX106RS

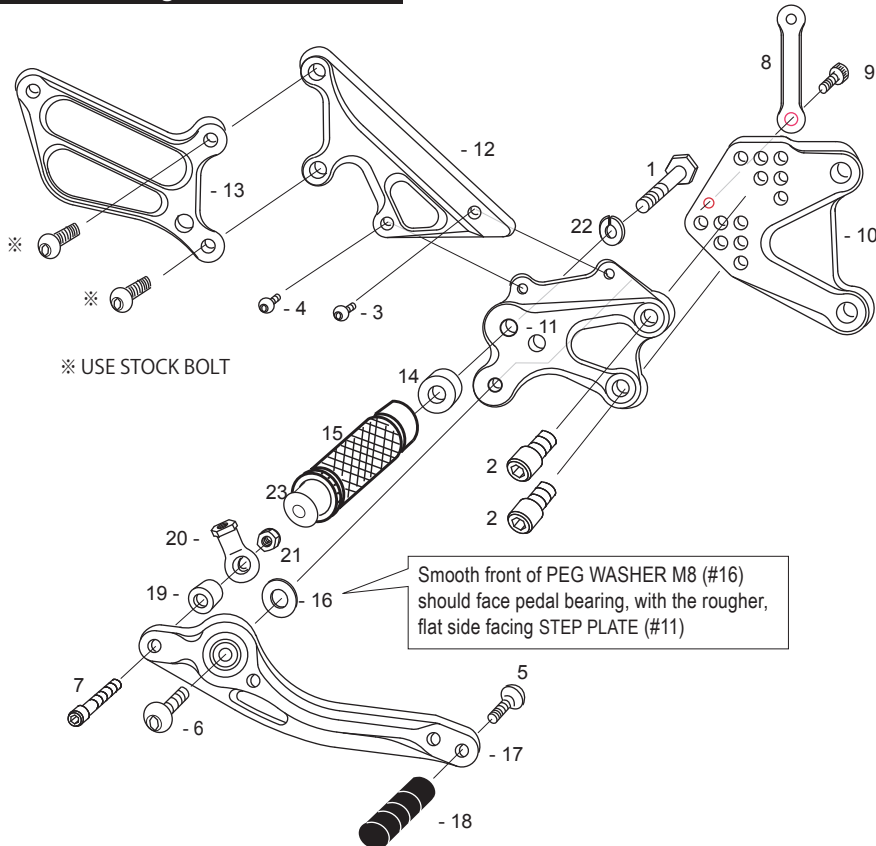


[L] SIDE

1. STUD BOLT LONG (M8×65mm) [STBT-L]
2. SOCKET HEAD M8×15mm [SBT-M815] ×2
3. BUTTON HEAD M6×10mm [BBT-M610] ×2
4. BUTTON HEAD M6×20mm [BBT-M620]
5. SOCKET HEAD M6×20mm [SBT-M620]
6. (L) BASE PLATE [K-ZX106BP-L]
7. (L) STEP PLATE [K-ZX106SP-L]
8. (L) HEEL GUARD [HG-3L]
9. PEG BEARING COLLAR 10 [PEGBGCLR-10]
10. SHIFT PEDAL 70 [SPD-0102]
11. SHIFT ROD 180 [SRD-180]
12. FOOT PEG [PEG]
13. PEDAL TIP (DELRIN) [ST-001D]
14. FEMALE ROD END M6 [RDED-F6]
15. ROD END COLLAR 3(GD) [RDED-CLR3]
16. JAM NUT M6 [JNT-6] ×2
17. STUD M6 [STUD-M6]
18. PEG WASHER M8 [PWS-8]
19. FLANGE NUT M8 [FNT-8]
20. FOOT PEG END CAP [ST-002]

※ADJUST THE STOCK CHANGE ARM WHEN INSTALLING SATO REAR SETS

[R] P-1.25 brake light switch included.



[R] SIDE

1. HEX BOLT M8×45mm [HBT-M845]
2. SOCKET HEAD M8×15mm [SBT-M815] ×2
3. BUTTON HEAD M6×10mm [BBT-M610]
4. BUTTON HEAD M6×15mm [BBT-M615]
5. BUTTON HEAD M6×20mm [BBT-M620]
6. BUTTON HEAD M8×25mm [BBT-M825]
7. SOCKET HEAD M6×35mm [SBT-M635]
8. HEAT GUARD STAY(SV)
9. SOCKET HEAD M6×10mm [SBT-M610]
10. (R) BASE PLATE [K-ZX106BP-R]
11. (R) STEP PLATE [K-ZX106SP-R]
12. MASTER STAY [K-ZX106MS]
13. (R) HEEL GUARD [HG-9R]
14. FOOT PEG COLLAR 12 [PEGCLR-12]
15. FOOT PEG [PEG]
16. PEG WASHER M8 [PWS-8]
17. BRAKE PEDAL 165 [BPD-3]
18. PEDAL TIP (DELRIN) [ST-001D]
19. BRAKE ROD COLLAR 10(BK) [BRD-CLR10]
20. 6-M8 FEMALE ROD END [RDED-F6-8]
21. LOCK NUT M6 [LNT-6]
22. SPLIT WASHER M8 [SWS-8]
23. FOOT PEG END CAP [ST-002]

Due to running improvements in the designs of Sato parts, some new replacement parts may look somewhat different than the original parts with the same part #. These slight differences are mostly cosmetic and have no effect on performance.

POSITIONS

1	0mm Back	15mm Up
2	0mm Back	25mm Up
3	0mm Back	35mm Up
4	10mm Back	25mm Up
5	10mm Back	35mm Up
6	20mm Back	35mm Up

All measurements are in relation to stock position (0 mm)