

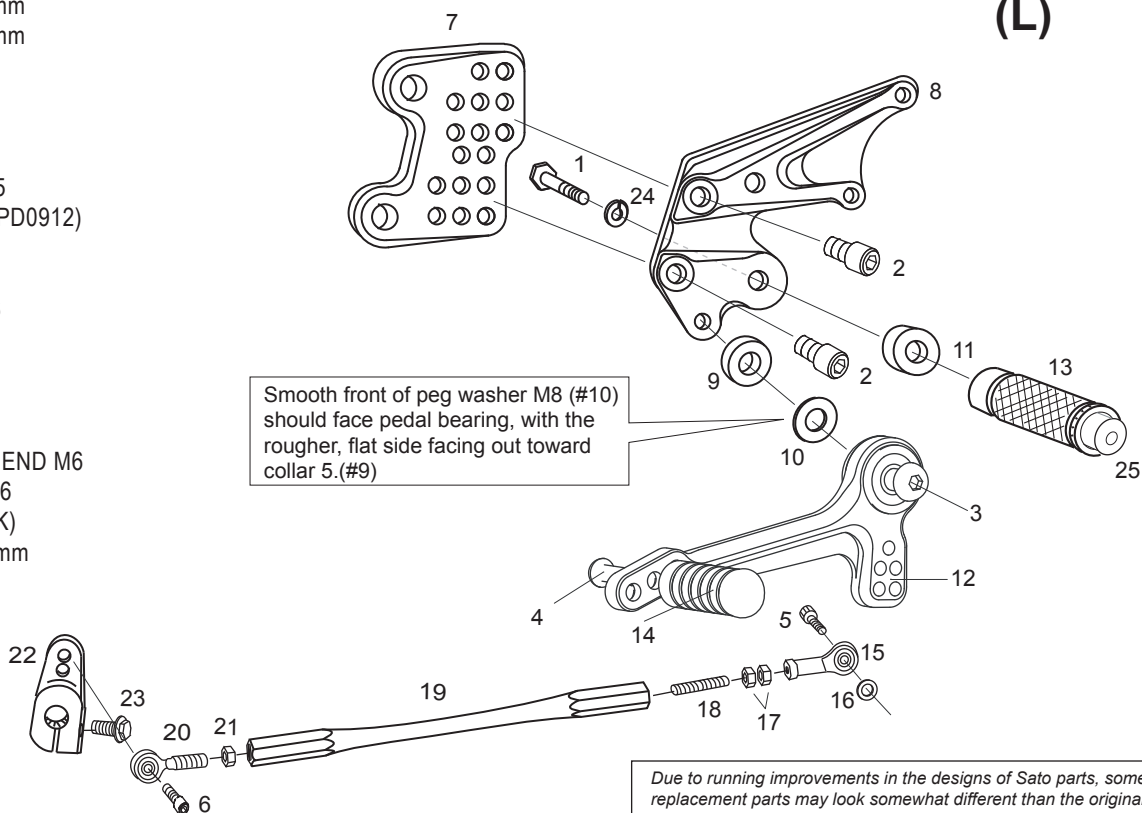
**[L] SIDE**

- 1.HEX BOLT M8-45mm
- 2.SOCKET HEAD M8-15mm X2
- 3.BUTTON HEAD M8-30mm
- 4.BUTTON HEAD M6-20mm
- 5.SOCKET HEAD M6-20mm
- 6.SOCKET HEAD M6-15mm
- 7.BASE PLATE [L]
- 8.STEP PLATE [L]
- 9.COLLAR 5
- 10.PEG WASHER M8
- 11.FOOT PEG COLLAR 15
- 12.SHIFT PEDAL 65-75(SPD0912)
- 13.FOOT PEG
- 14.PEDAL TIP (DELTRIN)
- 15.FEMALE ROD END M6
- 16.ROD END COLLAR 3
- 17.JAM NUT M6 X2
- 18.STUD M6
- 19.SHIFT ROD 140
- 20.MALE REVERSE ROD END M6
- 21.REVERSE JAM NUT M6
- 22.CHANGE ARM (CA4,BK)
- 23.FLANGE HEAD M6-20mm
- 24.SPLIT WASHER M8
- 25.FOOT PEG END CAP



**REAR SETS** part# K-ZX14RS  
**KAWASAKI ZX-14 (ZZR1400) ('06-'11)**

**(L)**



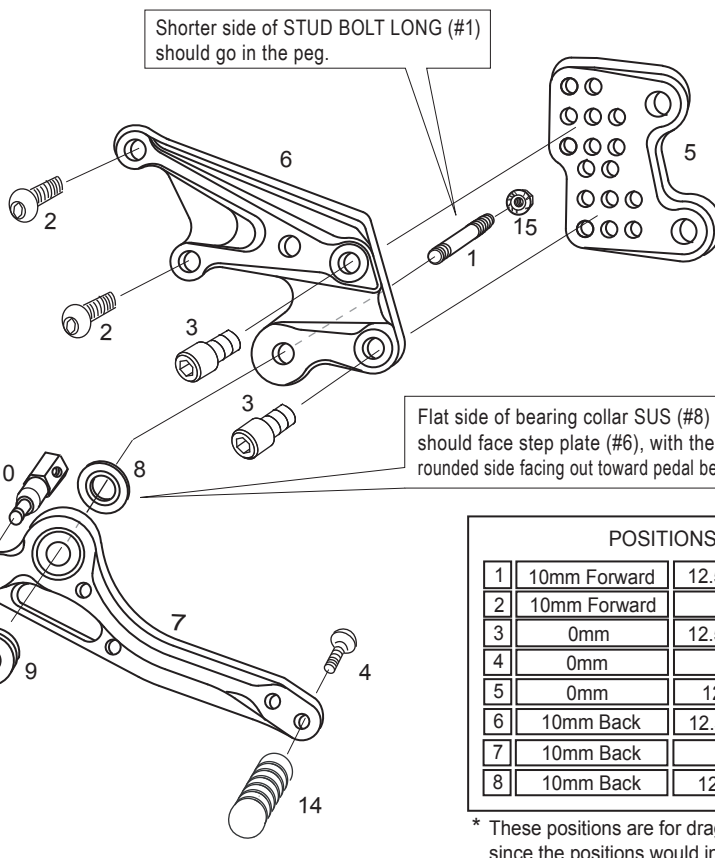
Smooth front of peg washer M8 (#10) should face pedal bearing, with the rougher, flat side facing out toward collar 5.(#9)

Due to running improvements in the designs of Sato parts, some new replacement parts may look somewhat different than the original parts with the same part #. These slight differences are mostly cosmetic and have no effect on performance.

**(R) P-1.25 brake light switch included.**

**[R] SIDE**

- 1.STUD BOLT LONG (M8-65mm)
- 2.BUTTON HEAD M8-20mm X2
- 3.SOCKET HEAD M8-15mm X2
- 4.BUTTON HEAD M6-25mm
- 5.BASE PLATE [R]
- 6.STEP PLATE [R]
- 7.BRAKE PEDAL [BPD7]
- 8.BEARING COLLAR SUS
- 9.FOOT PEG BEARING COLLAR 12.5
- 10.BRAKE ROD M40
- 11.WASHER M6
- 12.E CLIP M6
- 13.FOOT PEG
- 14.PEDAL TIP (DELTRIN)
- 15.FLANGE NUT M8
- 16.FOOT PEG END CAP



Shorter side of STUD BOLT LONG (#1) should go in the peg.

Flat side of bearing collar SUS (#8) should face step plate (#6), with the rounded side facing out toward pedal bearing.

Flat side of FOOT PEG BEARING COLLAR 12.5 (#9) should face foot peg with the stepped side facing out toward pedal bearing.

**POSITIONS**

1	10mm Forward	12.5mm Down*
2	10mm Forward	0mm
3	0mm	12.5mm Down*
4	0mm	0mm
5	0mm	12.5mm UP
6	10mm Back	12.5mm Down*
7	10mm Back	0mm
8	10mm Back	12.5mm UP

\* These positions are for drag bikes only since the positions would interfere with the sidestand on a stock ZX14 bike.