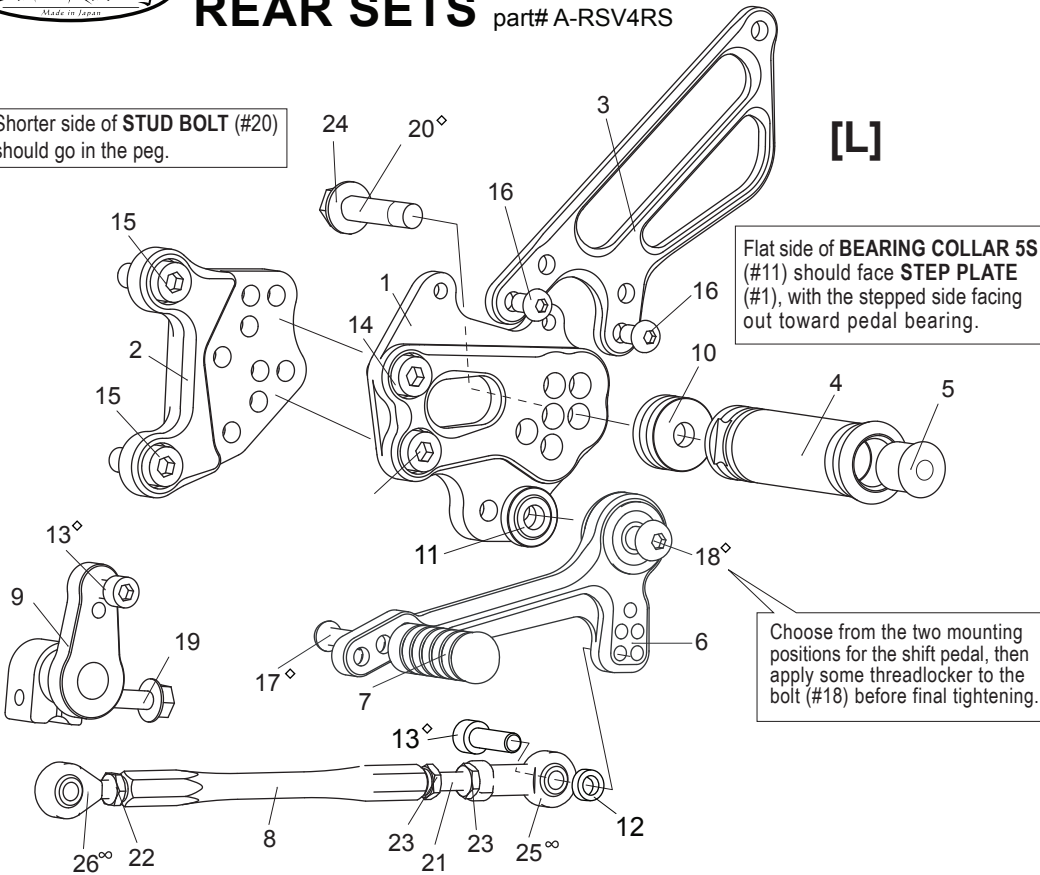


aprilia RSV4 ('09-'11, non-APRC) REAR SETS

part# A-RSV4RS

Shorter side of **STUD BOLT (#20)** should go in the peg.

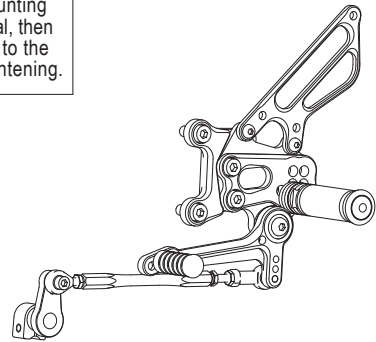


[L]

[L]-Side

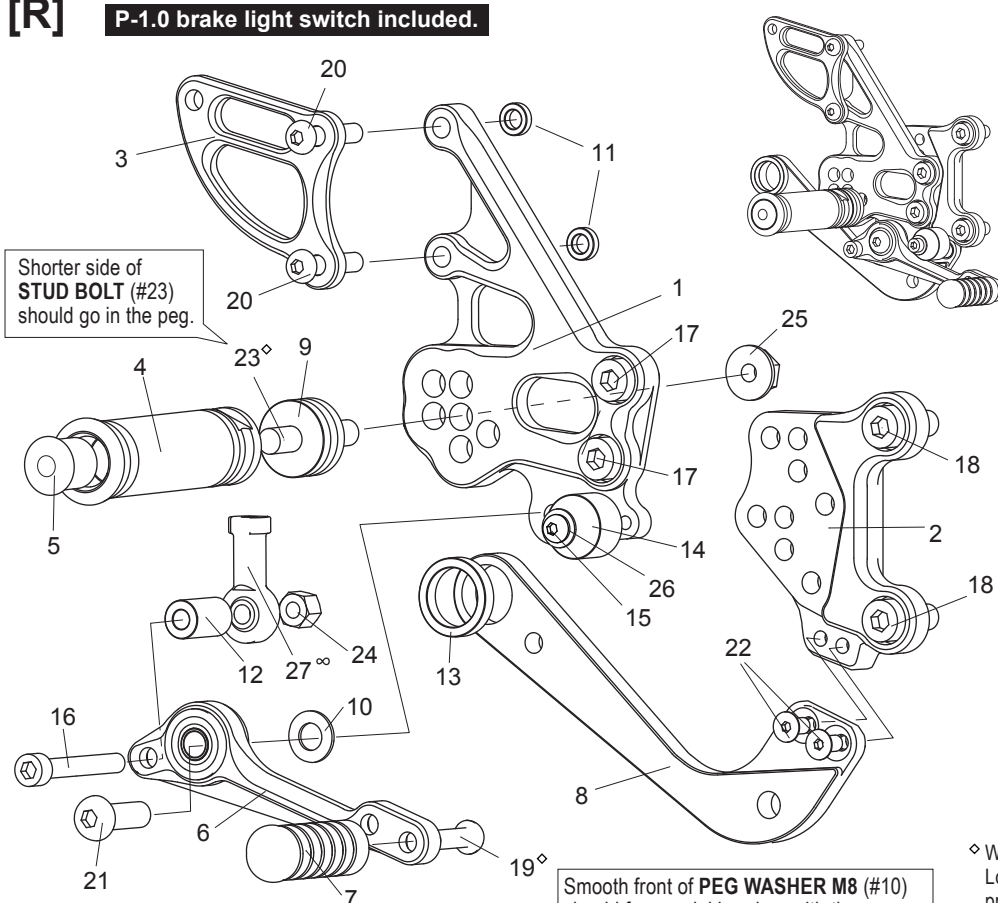
1. STEP PLATE [L] [A-RSV4SP-L]
2. BASE PLATE [L] [A-RSV4BP-R]
3. HEEL GUARD [L] [HG-14L]
4. FOOT PEG [PEG]
5. FOOT PEG END CAP [ST-002]
6. SHIFT PEDAL SCP65-75 [SPD-0912]
7. PEDAL TIP (DELRIN) [ST-001D]
8. SHIFT ROD 120 [SRD-120]
9. CHANGE ARM (BK) [CA-3]
10. FOOT PEG COLLAR 12 [PEGCLR-12]
11. BEARING COLLAR 5S (BK) [PEGBGCLR-5SB]
12. ROD END COLLAR 3 (GD) [RDED-CLR3]
13. SOCKET HEAD M6×20mm [SBT-M620] ×2
14. SOCKET HEAD M8×15mm [SBT-M815] ×2
15. SOCKET HEAD M8×20mm [SBT-M820] ×2
16. BUTTON HEAD M6×10mm [BBT-M610] ×2
17. BUTTON HEAD M6×20mm [BBT-M620]
18. BUTTON HEAD M8×30mm [BBT-M830]
19. FLANGE HEAD M6×20mm [FGBT-M620]
20. STUD BOLT M8×45 [STBT-45]
21. STUD M6 [STUD-M6]
22. REVERSE JAM NUT M6 [JNT-6L]
23. JAM NUT M6 [JNT-6] ×2
24. FLANGE NUT M8 [FNT-8]
25. FEMALE ROD END M6 [RDED-F6]
26. MALE REVERSE ROD END M6 [RDED-M6L]

Choose from the two mounting positions for the shift pedal, then apply some threadlocker to the bolt (#18) before final tightening.



[R]

P-1.0 brake light switch included.



[R]-Side

1. STEP PLATE [R] [A-RSV4SP-R]
2. BASE PLATE [R] [A-RSV4BP-R]
3. HEEL GUARD [R] [HG-22R]
4. FOOT PEG [PEG]
5. FOOT PEG END CAP [ST-002]
6. BRAKE PEDAL SBP145 [BPD-15]
7. PEDAL TIP (DELRIN) [ST-001D]
8. CANISTER BRACKET (BK)
9. FOOT PEG COLLAR 12 [PEGCLR-12]
10. PEG WASHER M8 [PWS-8]
11. COLLAR 3-6 (SV) [HGCLR-3] ×2
12. COLLAR 20-6 (BK) [CLR-20-6]
13. COLLAR 5 (BK) [CLR-5-18.5]
14. PEDAL STOPPER (DELRIN) [BPD-STOPPER]
15. BUTTON HEAD M5×18mm [BBT-M518]
16. SOCKET HEAD M6×45mm [SBT-M645]
17. SOCKET HEAD M8×15mm [SBT-M815] ×2
18. SOCKET HEAD M8×20mm [SBT-M820] ×2
19. BUTTON HEAD M6×20mm [BBT-M620]
20. BUTTON HEAD M6×30mm [BBT-M630] ×2
21. BUTTON HEAD M8×25mm [BBT-M825]
22. FLAT HEAD M5×10mm [FBT-M510] ×2
23. STUD BOLT M8×45 [STBT-45]
24. LOCK NUT M6 [LNT-6]
25. FLANGE NUT M8 [FNT-8]
26. PLAIN WASHER M5 [WS-5]
27. FEMALE ROD END M6 [RDED-F6]
28. BRAKE LIGHT SWITCH P-1.0 [BSW-1] (Not Pictured)

Smooth front of **PEG WASHER M8 (#10)** should face pedal bearing, with the rougher, flat side facing **STEP PLATE (#1)**.

◇ We recommend applying some threadlocker (such as Loctite or Vibra Tite) to these bolts. This should help prevent the parts from vibrating their way loose during use.

∞ Lubricate rod ends regularly