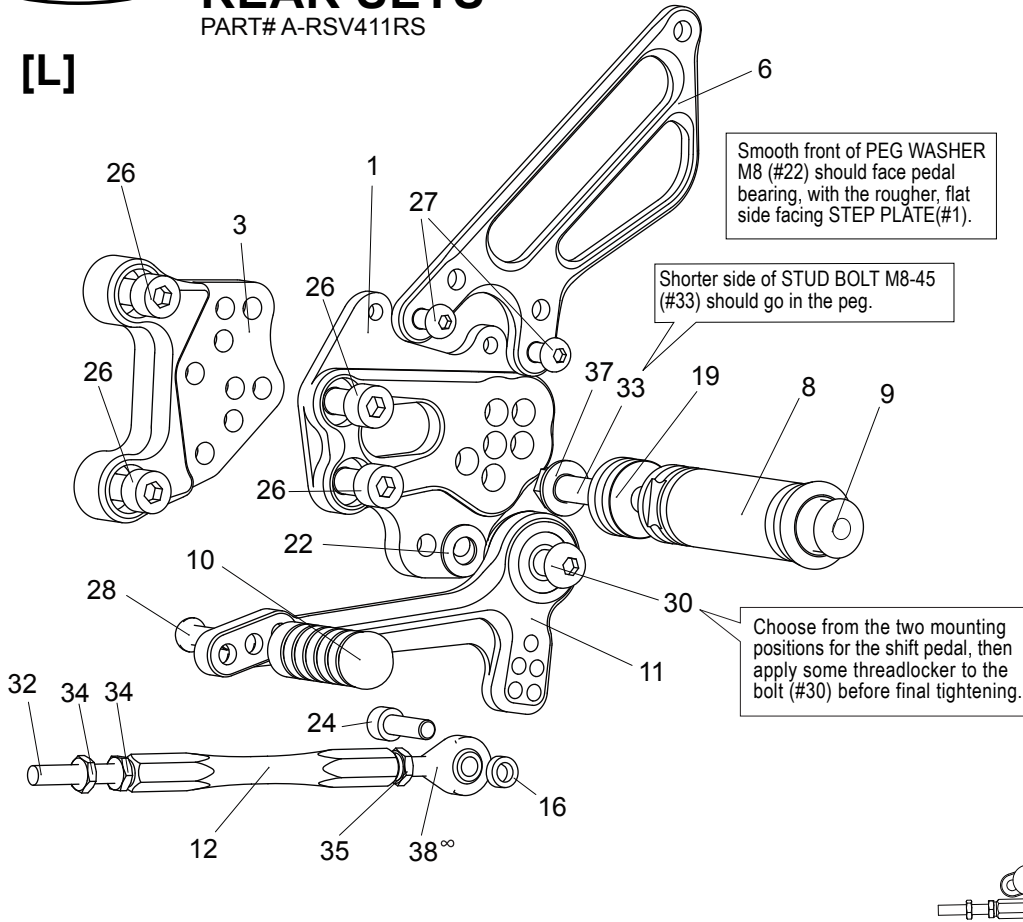
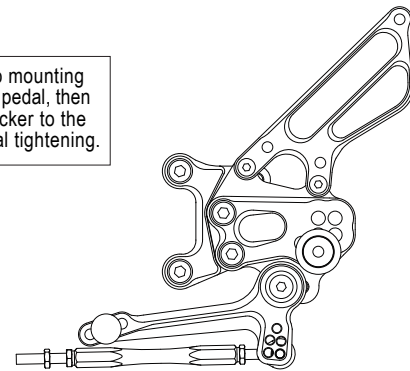


[L]



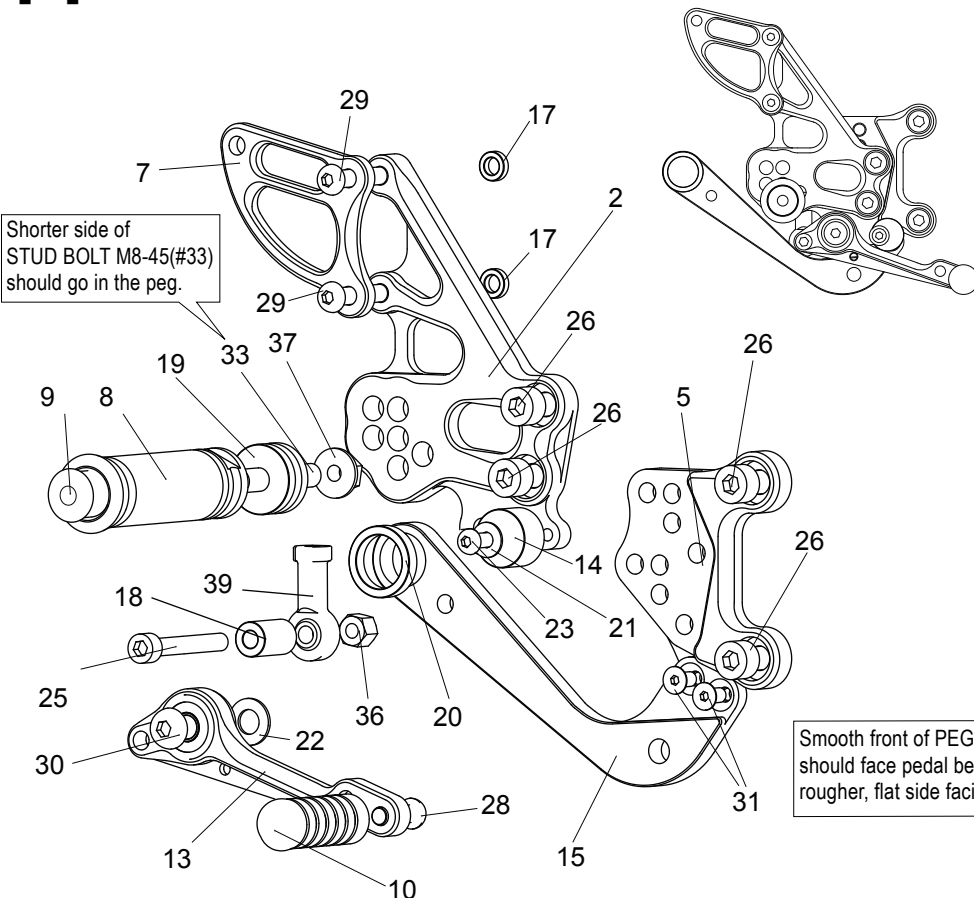
[L]-SIDE

1. (L) STEP PLATE
3. (L) BASE PLATE
6. (L) HEEL GUARD [HG-14L]
8. FOOT PEG [PEG]
9. FOOT PEG END CAP [ST-002]
10. PEDAL TIP [DELRIN] [ST-001D]
11. SHIFT PEDAL [SPD-0912]
12. SHIFT ROD 100 [SRD-100]
16. ROD END COLLAR 3(GD) [RDED-CLR3]
19. FOOT PEG COLLAR 12 [PEGCLR-12]
22. PEG WASHER M8 [PWS-8]
24. SOCKET HEAD M6-20 [SBT-M620]
26. SOCKET HEAD M8-15 [SBT-M815] x4
27. BUTTON HEAD M6-10 [BBT-M610] x2
28. BUTTON HEAD M6-20 [BBT-M620]
30. BUTTON HEAD M8-25 [BBT-M825]
32. STUD M6 [STUD-M6]
33. STUD BOLT M8-45 [STBT-45]
34. JAM NUT M6 [JNT-6] x2
35. REVERSE JAM NUT M6 [JNT-6L]
37. FLANGE NUT M8 [FNT-8]
38. MALE REVERSE ROD END M6 [RDED-M6L]



[R]

P-1.0 brake light switch included.



[R]-SIDE

2. (R) STEP PLATE
5. (R) BASE PLATE
7. (R) HEEL GUARD [HG-22R]
8. FOOT PEG [PEG]
9. FOOT PEG END CAP [ST-002]
10. PEDAL TIP (DELRIN) [ST-001D]
13. BRAKE PEDAL [BPD-15]
14. BRAKE PEDAL STOPPER (DELRIN) [BPD-STOPPER]
15. CANISTER BRACKET
17. COLLAR 3-6 [CLR3-6] x2
18. ROD END COLLAR 20-6 [RDEDCLR-20]
19. FOOT PEG COLLAR 12 [PEGCLR-12]
20. COLLAR 5-18.5 [CLR-5-185]
21. WASHER M5 [WS-5]
22. PEG WASHER M8 [PWS-8]
23. BUTTON HEAD M5-18 [BBT-M518]
25. SOCKET HEAD M6-45 [SBT-M645]
26. SOCKET HEAD M8-15 [SBT-M815] x4
28. BUTTON HEAD M6-20 [BBT-M620]
29. BUTTON HEAD M6-30 [BBT-M630] x2
30. BUTTON HEAD M8-25 [BBT-M825]
31. FLAT HEAD M5-10 [FBT-M510] x2
33. STUD BOLT M8-45 [STBT-45]
36. LOCK NUT M6 [LNT-6]
37. FLANGE NUT M8 [FNT-8]
39. FEMALE ROD END M6 [RDED-F6]