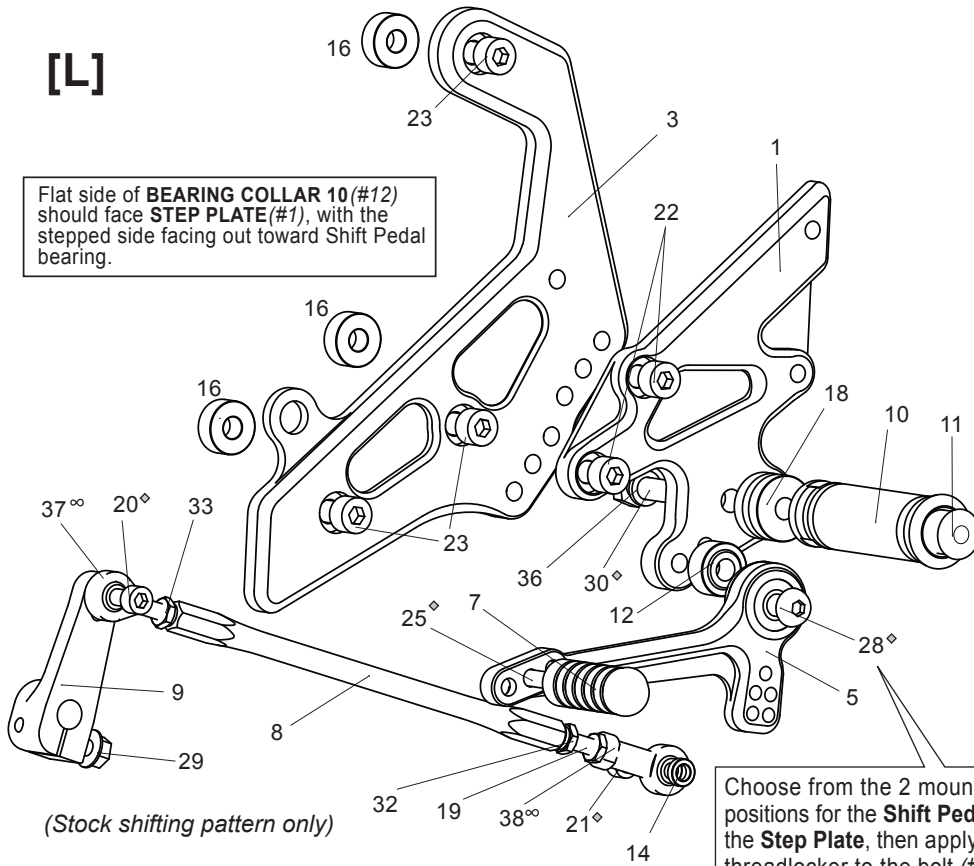


KAWASAKI Ninja 650 ('12-'16, non-ABS) REAR SETS part# K-65012RS

[L]

Flat side of **BEARING COLLAR 10**(#12) should face **STEP PLATE**(#1), with the stepped side facing out toward Shift Pedal bearing.



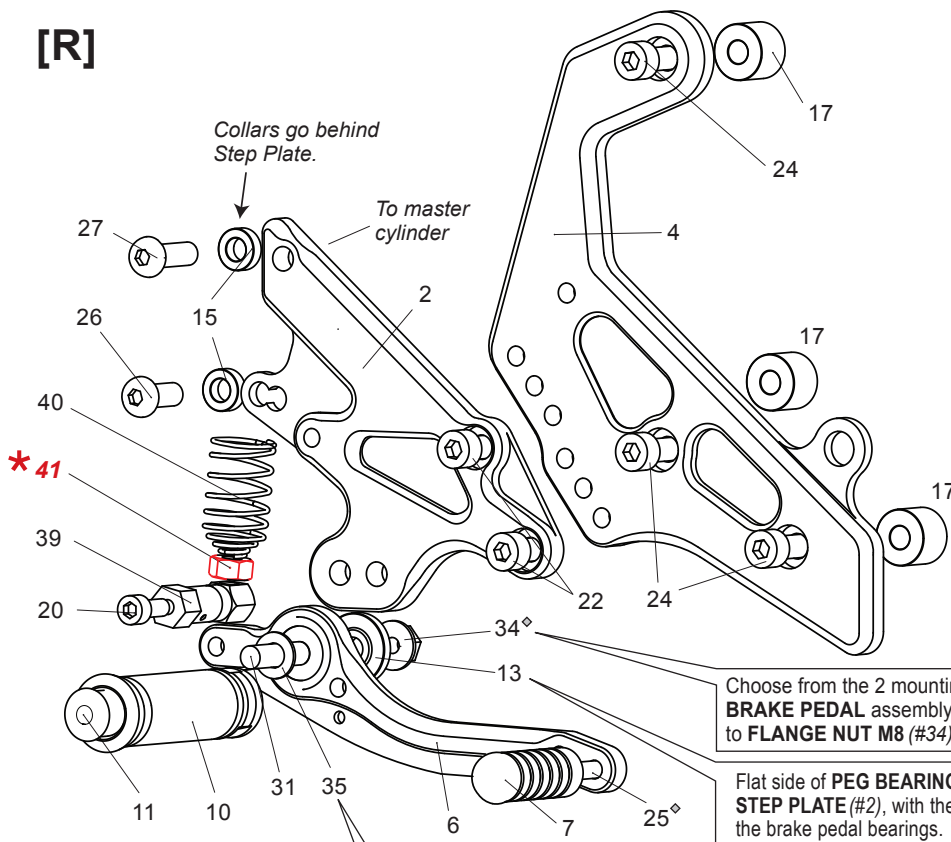
(Stock shifting pattern only)

Choose from the 2 mounting positions for the **Shift Pedal** on the **Step Plate**, then apply threadlocker to the bolt (#28) before tightening.

[R]

Collars go behind Step Plate.

To master cylinder



Choose from the 2 mounting positions for the **FOOT PEG/ BRAKE PEDAL** assembly, then apply some threadlocker to **FLANGE NUT M8** (#34) before tightening.

Flat side of **PEG BEARING COLLAR 5**(#13) should face **STEP PLATE**(#2), with the stepped side facing out toward the brake pedal bearings.

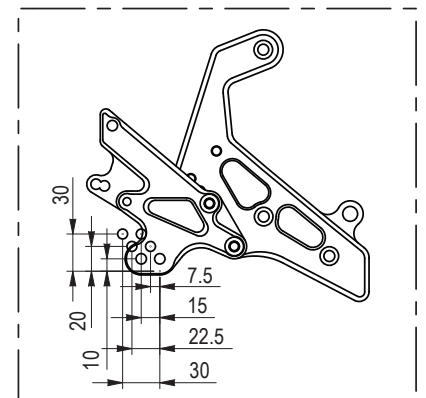
Smooth side of **PEG WASHER M8**(#35) should face pedal bearing, with the rougher, flat side facing out toward **FOOT PEG** (#10).

1. STEP PLATE [L] [K-65012SP-L]
2. STEP PLATE [R] [K-65012SP-R]
3. BASE PLATE [L] [K-65012BP-L]
4. BASE PLATE [R] [K-65012BP-R]
5. SHIFT PEDAL [SPD0912]
6. BRAKE PEDAL [BPD-2]
7. PEDAL TIP (DELRIN) [ST-001D18] x 2
8. SHIFT ROD 180 [SRD-180]
9. CHANGE ARM SS45 (BK) [CA-SS45]
10. FOOT PEG [PEG] x 2
11. FOOT PEG END CAP [ST-002] x 2
12. BEARING COLLAR 10 (BK) [PEGBGCLR-10SB]
13. BEARING COLLAR 5 (BK) [PEGBGCLR-5SB]
14. ROD END COLLAR 3 (GD) [RDED-CLR3]
15. COLLAR 5-8 (BK) x 2
16. BASE PLATE COLLAR 8 (BK) [BPCLR-8] x 3
17. BASE PLATE COLLAR 15 (BK) [BPCLR-15] x 3
18. PEG COLLAR 15 [PEGCLR-15]
19. STUD M6 [STUD-M6]
20. SOCKET HEAD M6-15mm x 2
21. SOCKET HEAD M6-20mm
22. SOCKET HEAD M8-15mm x 4
23. SOCKET HEAD M8-30mm x 3
24. SOCKET HEAD M8-35mm x 3
25. BUTTON HEAD M6-20mm x 2
26. BUTTON HEAD M8-20mm
27. BUTTON HEAD M8-25mm
28. BUTTON HEAD M8-35mm
29. FLANGE HEAD M6-20mm [FGBT-M620]
30. HEX HEAD M8-40mm [HBT-M840]
31. STUD BOLT M8-55mm [STBT-S]
32. JAM NUT M6 [JNT-6] x 2
33. REVERSE JAM NUT M6 [JNT-6L]
34. FLANGE NUT M8 [FNT-8]
35. PEG WASHER M8 [PWS-8]
36. SPLIT WASHER M8 [SWS-8]
37. MALE REVERSE ROD END M6 [RDED-M6L]
38. FEMALE ROD END M6 [RDED-F6]
39. BRAKE ROD [BRD-L2]
40. RETURN SPRING 40 [RS-RSP]

★ 41. NUT M8 (KAWASAKI PART)

Not Pictured:

BRAKE LIGHT SWITCH P-1.25 [BSW-125]



◇ Apply threadlocker to these bolts before tightening.

∞ Clean and lubricate rod end ball joints periodically.