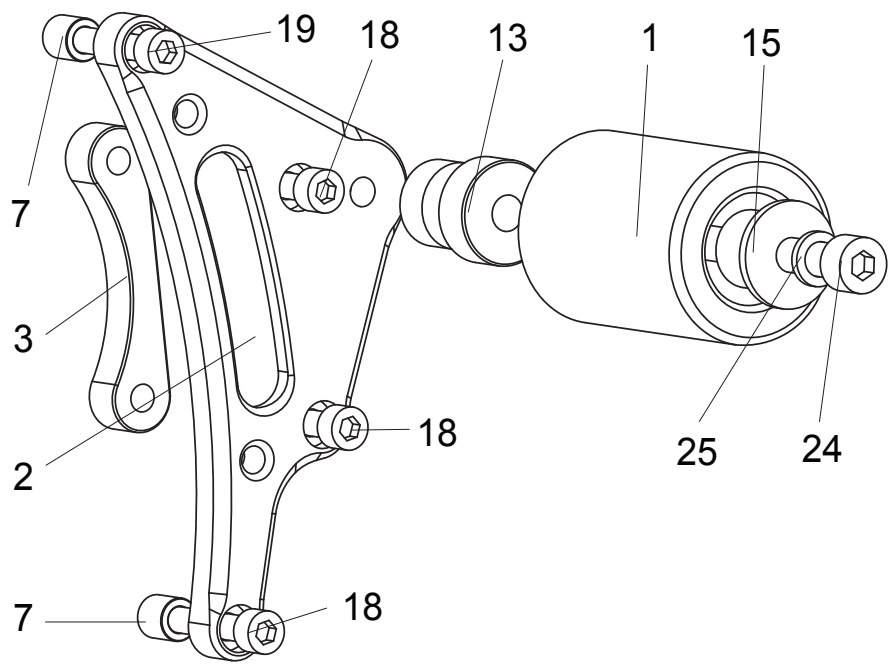


**[L]** Attached to the generator cover



1. SLIDER PUCK [SDR-L72.5] x 2
2. [L] SLIDER BASE (OUTER)
3. [L] SLIDER BASE (INNER)
4. [R] SLIDER BASE (OUTER)
5. [R] SLIDER BASE (INNER)
6. COLLAR 1.5-5 [CLR-1.5-5-SUS]
7. COLLAR 10-6 [CLR-10-6] x 2
8. COLLAR 25-6 [CLR-25-6]
9. COLLAR 36-6 [CLR-36-6]
10. COLLAR 44-6 [CLR-44-6]
11. COLLAR 10-8 (20mm) (BK) [CLR20-10-8]
12. COLLAR 10-8 (24mm) (BK) [CLR24-10-8]
13. COLLAR 30V-8 (BK) [CLR-30-8V]
14. COLLAR 12-6V4R [CLR-12-6V4R]
15. COLLAR 17.5-8Z (Pre-installed in Slider Puck) x 2
16. SOCKET HEAD M5x40mm [SBT-M540]
17. SOCKET HEAD M6x10mm [SBT-M610]
18. SOCKET HEAD M6x35mm [SBT-M635] x 4
19. SOCKET HEAD M6x40mm [SBT-M640]
20. SOCKET HEAD M6x60mm [SBT-M660]
21. SOCKET HEAD M6x70mm [SBT-M670]
22. SOCKET HEAD M8x25mm [SBT-M825]
23. SOCKET HEAD M8x40mm [SBT-M840]
24. SOCKET HEAD M8x60mm [SBT-M860]
25. SPLIT WASHER M8 [SWS-8] x 2

Apply some threadlocker (such as Loctite or Vibra Tite) to these bolts before tightening. This will help keep the parts from vibrating loose or falling off during a ride.

If you notice any fluids are seeping out around the engine bolt holes after installing, applying some liquid gasket or similar thread sealer to the threads of these bolts when tightening should prevent any leaks.