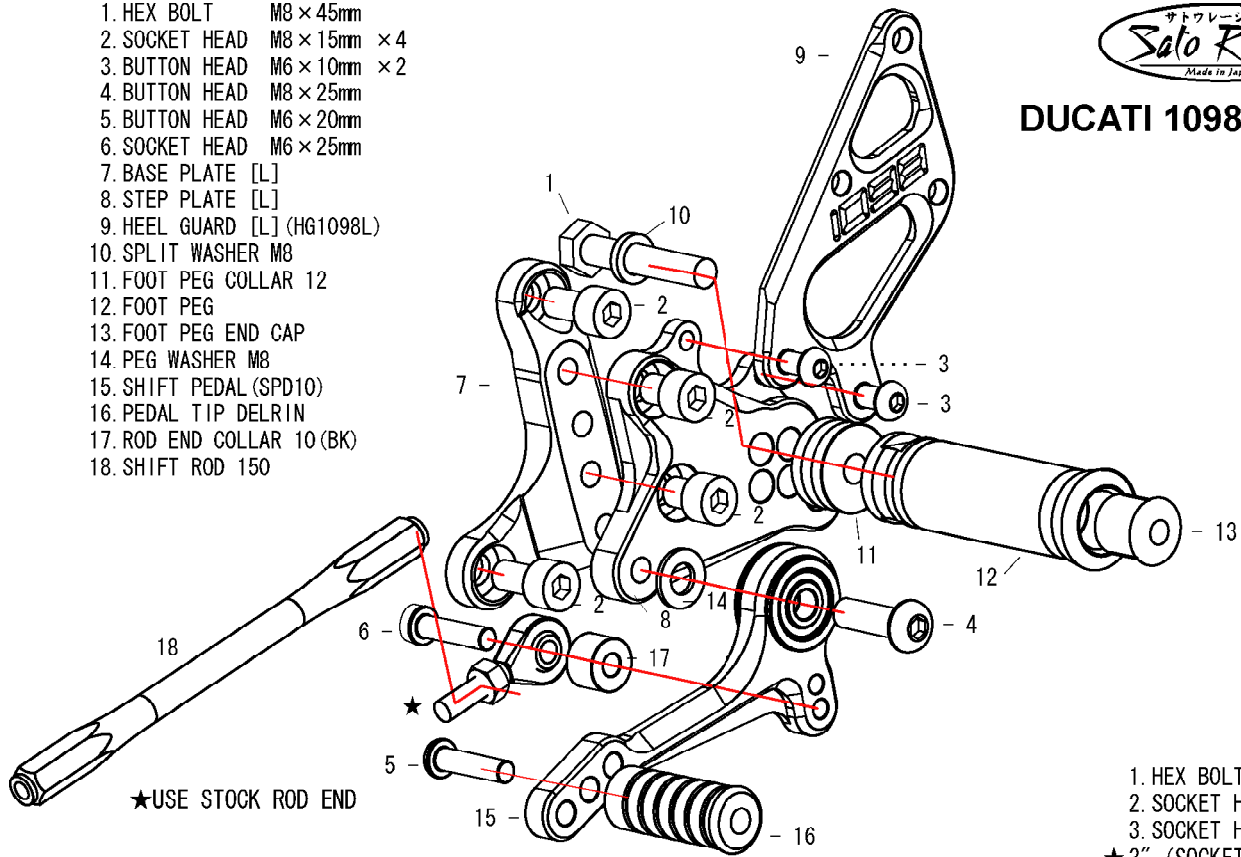




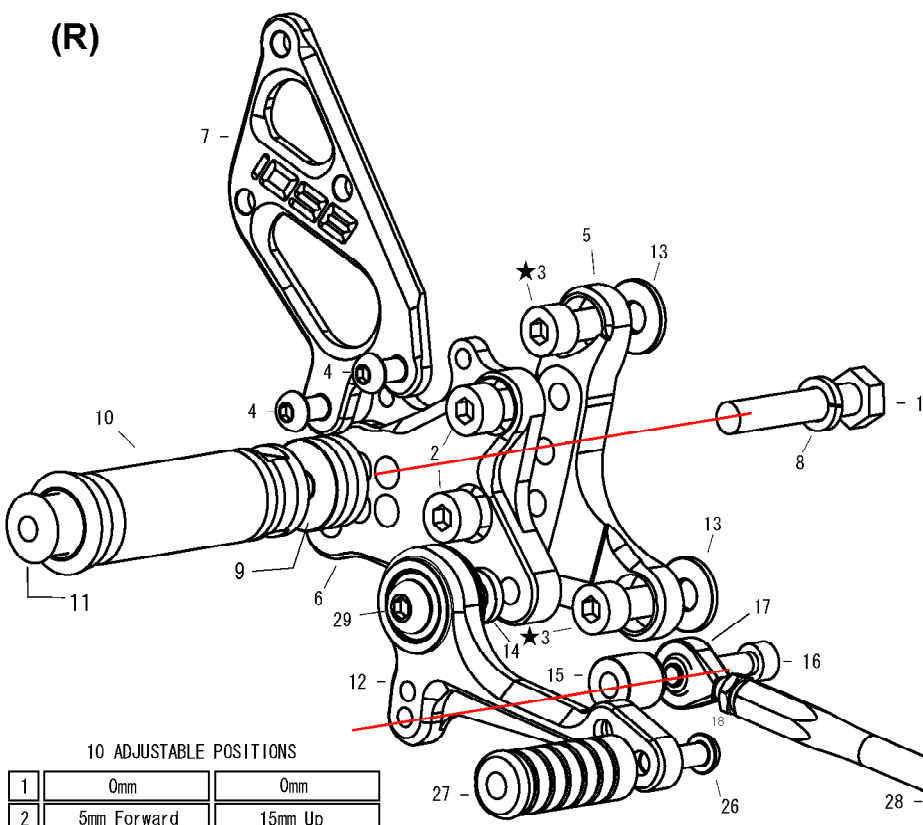
# DUCATI 1098/S Type2 (L)

- 1. HEX BOLT M8 × 45mm
- 2. SOCKET HEAD M8 × 15mm × 4
- 3. BUTTON HEAD M6 × 10mm × 2
- 4. BUTTON HEAD M8 × 25mm
- 5. BUTTON HEAD M6 × 20mm
- 6. SOCKET HEAD M6 × 25mm
- 7. BASE PLATE [L]
- 8. STEP PLATE [L]
- 9. HEEL GUARD [L] (HG1098L)
- 10. SPLIT WASHER M8
- 11. FOOT PEG COLLAR 12
- 12. FOOT PEG
- 13. FOOT PEG END CAP
- 14. PEG WASHER M8
- 15. SHIFT PEDAL (SPD10)
- 16. PEDAL TIP DELRIN
- 17. ROD END COLLAR 10 (BK)
- 18. SHIFT ROD 150



- 1. HEX BOLT M8 × 45mm
- 2. SOCKET HEAD M8 × 15mm × 2
- 3. SOCKET HEAD M8 × 15mm × 2
- ★ 3" (SOCKET HEAD M8 × 25mm × 2)
- ★ BASE PLATE COLLAR 10mm (BK) × 2
- 4. BUTTON HEAD M6 × 10mm × 2
- 5. BASE PLATE [R]
- 6. STEP PLATE [R]
- 7. HEEL GUARD [R] (HG1098R)
- 8. SPLIT WASHER M8
- 9. FOOT PEG COLLAR 12
- 10. FOOT PEG
- 11. FOOT PEG END CAP
- 12. BRAKE PEDAL SS75 (BPD10)
- 13. BASE PLATE COLLAR 2 (BK)
- 14. BRAKE PEDAL COLLAR 3 (BK)
- 15. BRAKE ROD COLLAR 15 (BK)
- 16. SOCKET HEAD M6 × 30mm × 2
- 17. MALE REVERSE ROD END M6
- 18. REVERSE JAM NUT M6
- 19. MALE ROD END M6
- 20. JAM NUT M6
- 21. ROD END COLLAR 6
- 22. SPRING HOOK NUT
- 23. SOCKET HEAD M8 × 35mm
- 24. PEG WASHER M8
- 25. BRAKE LINK
- 26. BUTTON HEAD M6 × 20mm
- 27. PEDAL TIP DELRIN
- 28. BRAKE ROD 130
- 29. BUTTON HEAD M8 × 25mm

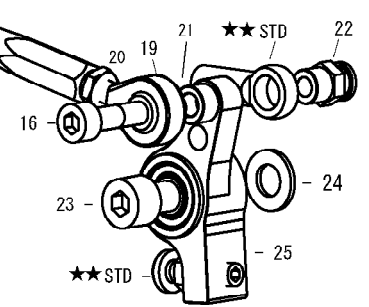
(R)



10 ADJUSTABLE POSITIONS

1	0mm	0mm
2	5mm Forward	15mm Up
3	10mm Forward	5mm Up
4	10mm Forward	15mm Up
5	15mm Forward	20mm Up
6	15mm Forward	30mm Up
7	20mm Forward	5mm Up
8	20mm Forward	15mm Up
9	25mm Forward	20mm Up
10	25mm Forward	30mm Up

★USE SOCKET HEAD M8 × 25mm AND BASE PLATE COLLAR 10mm FOR RACING KIT INSTEAD OF SOCKET HEAD M8 × 15mm FOR #3.



★★STD  
★★★USE STOCK PARTS