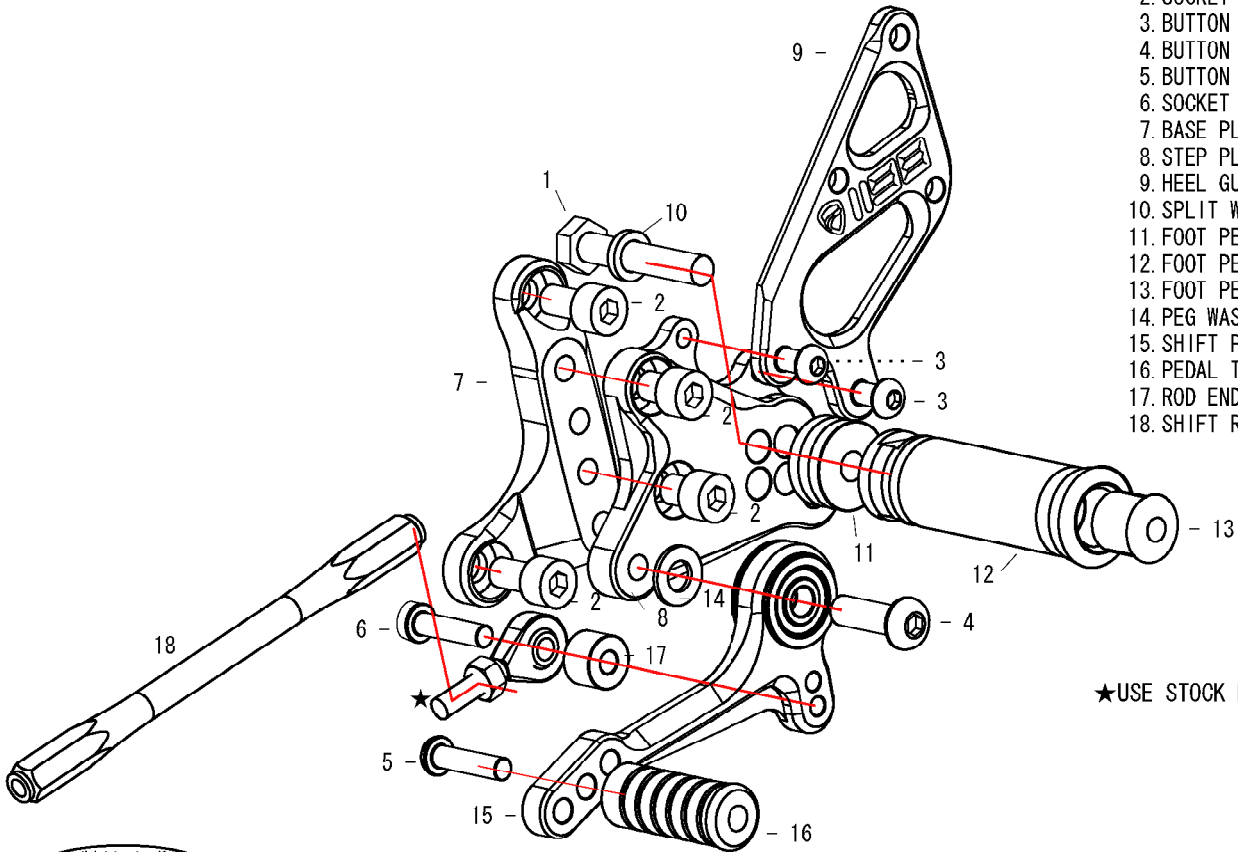


DUCATI 1198 Type1 (L)

1. HEX BOLT M8 × 45mm
2. SOCKET HEAD M8 × 15mm × 4
3. BUTTON HEAD M6 × 10mm × 2
4. BUTTON HEAD M8 × 25mm
5. BUTTON HEAD M6 × 20mm
6. SOCKET HEAD M6 × 25mm
7. BASE PLATE [L]
8. STEP PLATE [L]
9. HEEL GUARD [L] (HG1198L)
10. SPLIT WASHER M8
11. FOOT PEG COLLAR 12
12. FOOT PEG
13. FOOT PEG END CAP
14. PEG WASHER M8
15. SHIFT PEDAL (SPD10)
16. PEDAL TIP DELRIN
17. ROD END COLLAR 10 (BK)
18. SHIFT ROD 150



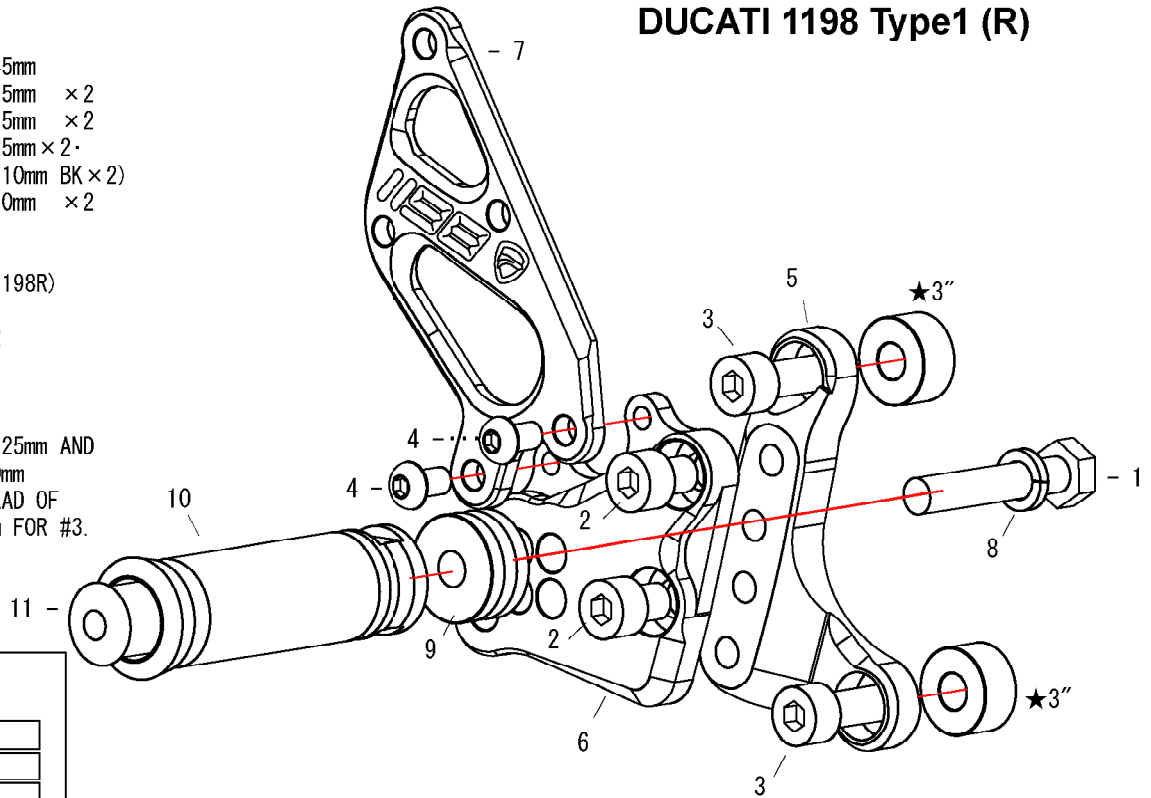
★USE STOCK ROD END



DUCATI 1198 Type1 (R)

1. HEX BOLT M8 × 45mm
2. SOCKET HEAD M8 × 15mm × 2
3. SOCKET HEAD M8 × 15mm × 2
- ★3" (SOCKET HEAD M8 × 25mm × 2)
- BASE PLATE COLLAR 10mm BK × 2)
4. BUTTON HEAD M6 × 10mm × 2
5. BASE PLATE [R]
6. STEP PLATE [R]
7. HEEL GUARD [R] (HG1198R)
8. SPLIT WASHER M8
9. FOOT PEG COLLAR 12
10. FOOT PEG
11. FOOT PEG END CAP

★USE SOCKET HEAD M8 × 25mm AND BASE PLATE COLLAR 10mm FOR RACING KIT INSTEAD OF SOCKET HEAD M8 × 15mm FOR #3.



10 ADJUSTABLE POSITIONS

1	0mm	0mm
2	5mm Forward	15mm Up
3	10mm Forward	5mm Up
4	10mm Forward	15mm Up
5	15mm Forward	20mm Up
6	15mm Forward	30mm Up
7	20mm Forward	5mm Up
8	20mm Forward	15mm Up
9	25mm Forward	20mm Up
10	25mm Forward	30mm Up