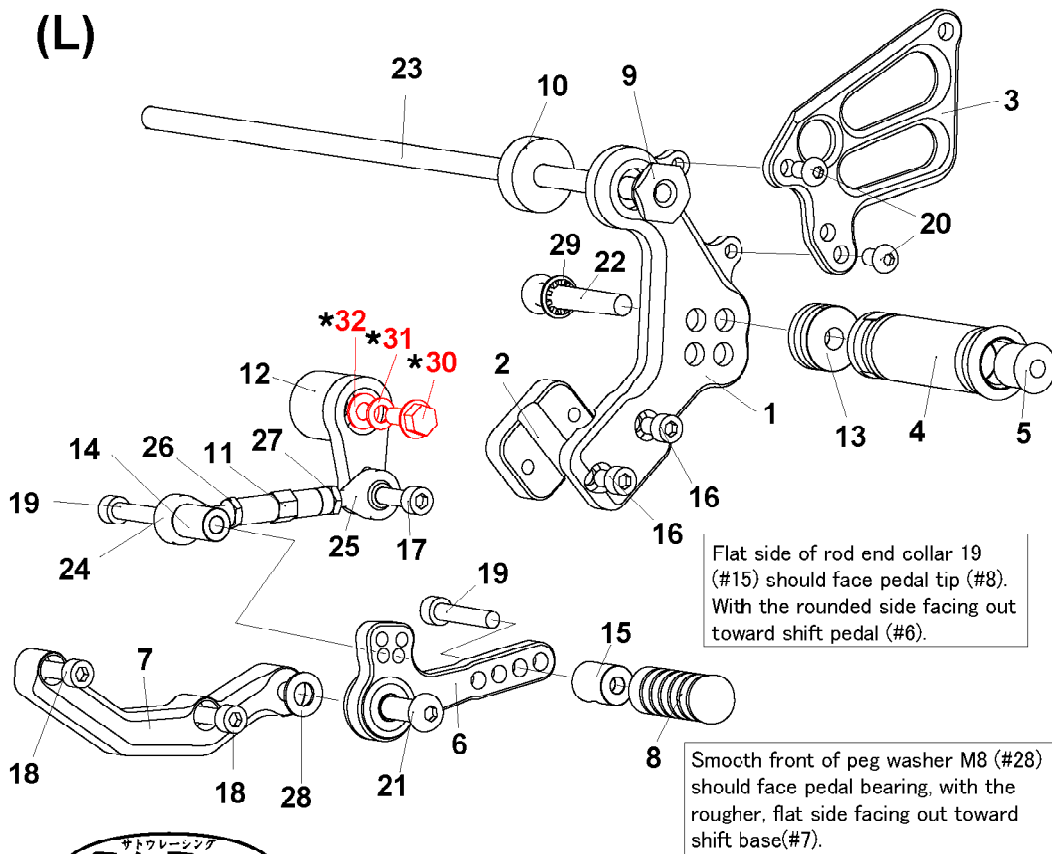


KTM 690 DUKE (L)



1. STEP PLATE [L]
 2. STEP PLATE CLAMP(BK)
 3. HEEL GUARD [L](HG20)
 4. FOOT PEG
 5. FOOT PEG END CAP
 6. SHIFT PEDAL(SPD15, BK)
 7. SHIFT BASE(BK)
 8. PEDAL TIP DELRIN
 9. PIVOT NUT DUKE690 M8(BK)
 10. COLLAR DUKE690(BK)
 11. SHIFT ROD 40
 12. CHANGE ARM (CA-KTM, BK)
 13. FOOT PEG COLLAR 12
 14. COLLAR 20-6(BK)
 15. ROD END COLLAR 19(BK)
 16. SOCKET HEAD M6 × 10mm × 2
 17. SOCKET HEAD M6 × 20mm
 18. SOCKET HEAD M6 × 30mm × 2
 19. SOCKET HEAD M6 × 40mm × 2
 20. BUTTON HEAD M6 × 10mm × 2
 21. BUTTON HEAD M8 × 25mm
 22. BUTTON HEAD M8 × 40mm
 23. BOLT M8 × 325mm
 24. MALE ROD END M6
 25. MALE REVERSE ROD END M6
 26. JAM NUT M6
 27. REVERSE JAM NUT M6
 28. PEG WASHER M8
 29. INTERNAL STAR WASHER M8
- *32. FLANGE BOLT(STOCK)**
***31. LOCK WASHER(STOCK)**
***30. WASHER(STOCK)**

Flat side of rod end collar 19 (#15) should face pedal tip (#8). With the rounded side facing out toward shift pedal (#6).

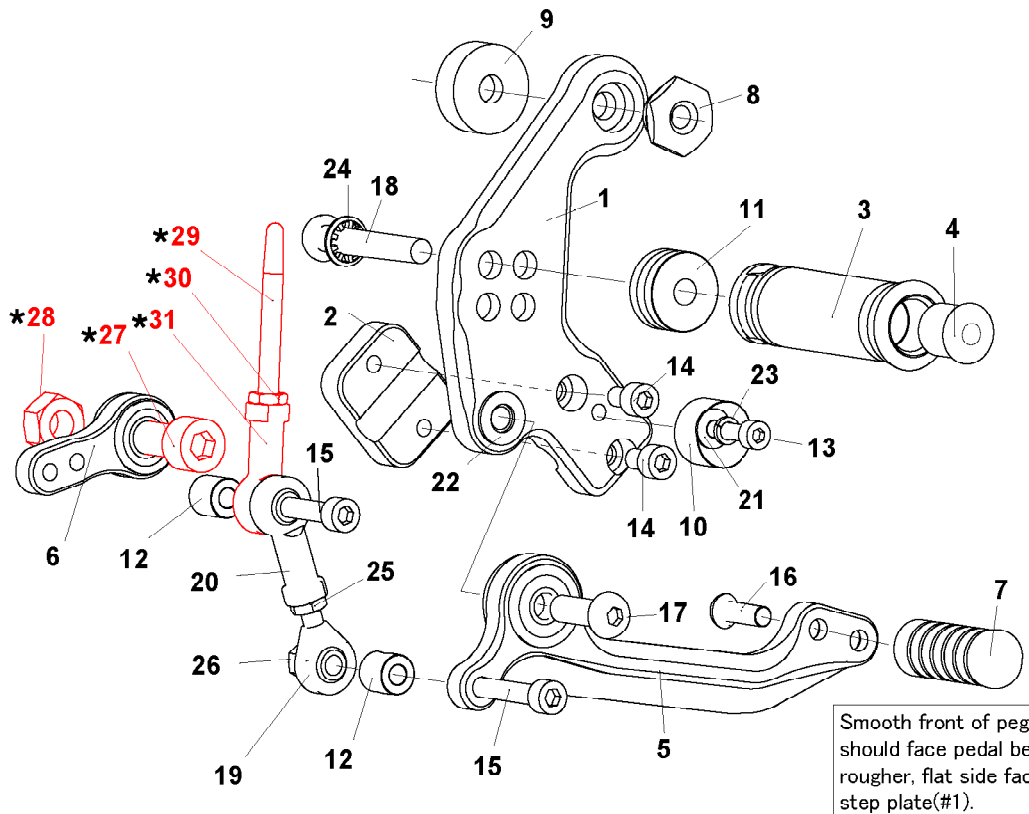
Smooth front of peg washer M8 (#28) should face pedal bearing, with the rougher, flat side facing out toward shift base(#7).



Due to running improvements in the designs of Sato parts, some new replacement parts may look somewhat different than the original parts with the same part #. These slight differences are mostly cosmetic and have no effect on performance.

(R)

No brake light switch included.



1. STEP PLATE [R]
 2. STEP PLATE CLAMP(BK)
 3. FOOT PEG
 4. FOOT PEG END CAP
 5. BRAKE PEDAL (BPD16)
 6. BRAKE LINK 35-M10(BK)
 7. PEDAL TIP DELRIN
 8. PIVOT NUT DUKE690 M8(BK)
 9. COLLAR DUKE690(BK)
 10. BRAKE PEDAL STOPPER DELRIN
 11. FOOT PEG COLLAR 12
 12. COLLAR 12-6(BK) × 2
 13. SOCKET HEAD M5 × 20mm
 14. SOCKET HEAD M6 × 10mm × 2
 15. SOCKET HEAD M6 × 40mm × 2
 16. BUTTON HEAD M6 × 20mm
 17. BUTTON HEAD M8 × 25mm
 18. BUTTON HEAD M8 × 35mm
 19. MALE ROD END M6
 20. FEMALE ROD END M6
 21. PLAIN WASHER M5
 22. PEG WASHER M8
 23. SPLIT WASHER M5
 24. INTERNAL STAR WASHER M8
 25. JAM NUT M6
 26. LOCK NUT M6
- *27. SOCKET HEAD M10(STOCK)**
***28. HEX NUT M10(STOCK)**
***29. PUSH ROD(STOCK)**
***30. ROD END(STOCK)**
***31. NUT(STOCK)**

Smooth front of peg washer M8 (#22) should face pedal bearing, with the rougher, flat side facing out toward step plate(#1).